

NC-3, 21 APR 2022 to 19 MAY 2022

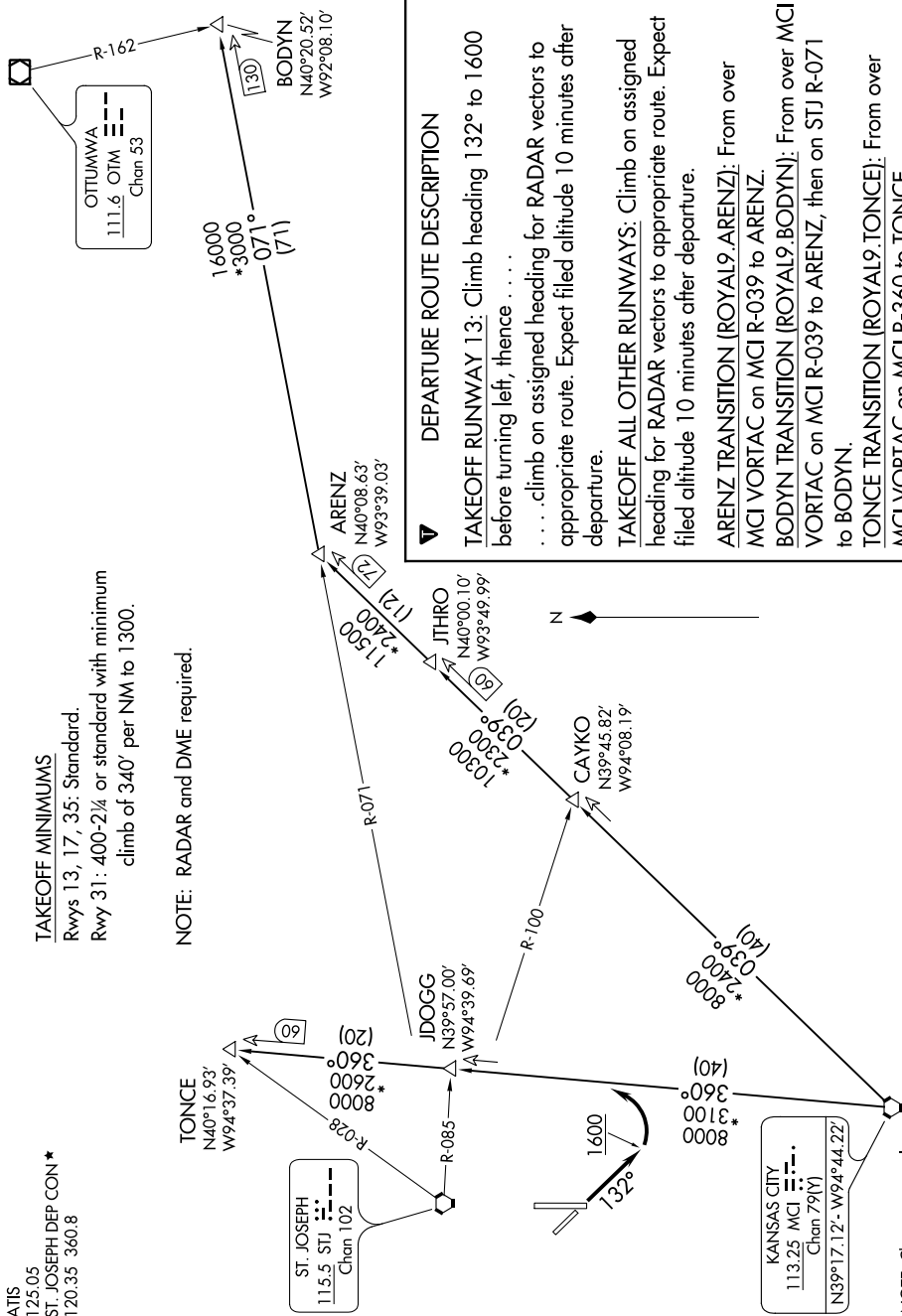
ATIS
125.05
ST. JOSEPH DEP CON *
120.35 360.8

TAKEOFF MINIMUMS

Rwys 13, 17, 35: Standard

Rwy 31: 400-2¼ or standard with minimum
climb of 340' per NM to 1300.

NOTE: RADAR and DME required.



DEPARTURE ROUTE DESCRIPTION

TAKEOFF RUNWAY 13: Climb heading 132° to 1600 before turning left, thence

. . . .climb on assigned heading for RADAR vectors to appropriate route. Expect filed altitude 10 minutes after departure.

TAKEOFF ALL OTHER RUNWAYS: Climb on assigned heading for RADAR vectors to appropriate route. Expect filed altitude 10 minutes after departure.

ARENZ TRANSITION (ROYAL9.ARENZ): From over MCI VORTAC on MCI R-039 to ARENZ.

BODYN TRANSITION (ROYAL9.BODYN): From over MCI VORTAC on MCI R-039 to ARENZ, then on STJ R-071 to BODYN.

TONCE TRANSITION (ROYAL9.TONCE): From over MCI VORTAC on MCI R-360 to TONCE.

NC-3, 21 APR 2022 to 19 MAY 2022