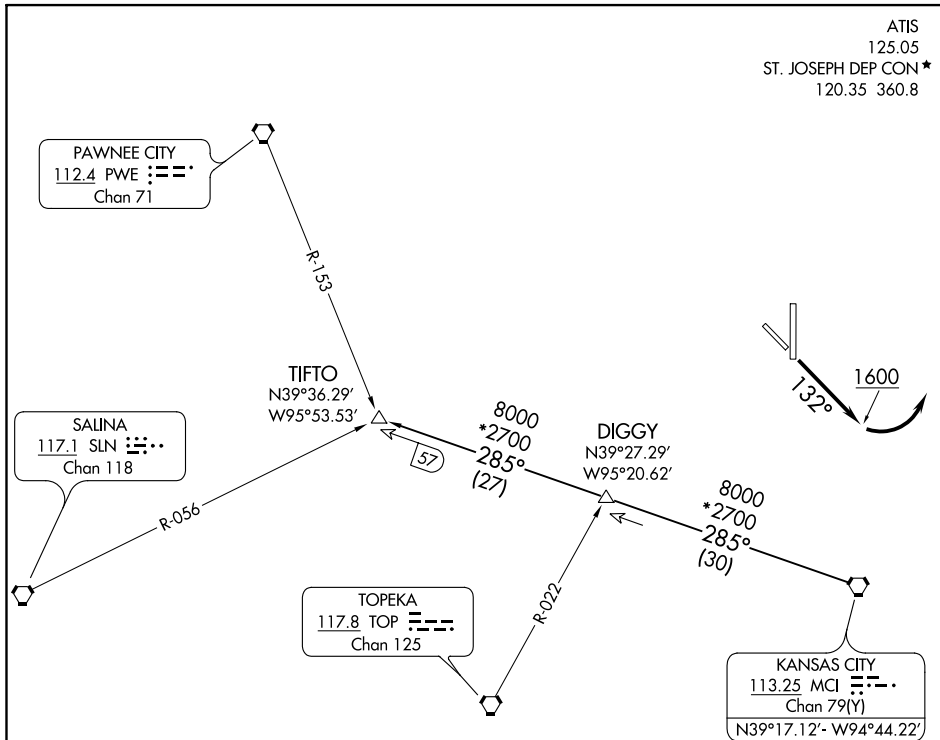


(TIFTO6.MCI) 21112  
**TIFTO SIX DEPARTURE**

AL-359 (FAA)

ROSECRANS MEML (STJ)  
 ST. JOSEPH, MISSOURI

ATIS  
 125.05  
 ST. JOSEPH DEP CON\*  
 120.35 360.8



NC-3, 21 APR 2022 to 19 MAY 2022

NC-3, 21 APR 2022 to 19 MAY 2022

NOTE: RADAR required.

**TAKEOFF MINIMUMS**

Rwys 13, 17, 35: Standard.  
 Rwy 31: 400-2¼ or standard with minimum climb  
 of 340' per NM to 1300.

NOTE: Chart not to scale



**DEPARTURE ROUTE DESCRIPTION**

**TAKEOFF RUNWAY 13:** Climb heading 132° to 1600 before turning left, thence. . . . climb on assigned heading for RADAR vectors to appropriate route. Expect filed altitude 10 minutes after departure.

**TAKEOFF ALL OTHER RUNWAYS:** Climb on assigned heading for RADAR vectors to appropriate route. Expect filed altitude 10 minutes after departure.

**TIFTO TRANSITION (TIFTO6.TIFTO):** From over MCI VORTAC on MCI R-285 to TIFTO.

**TIFTO SIX DEPARTURE**  
 (TIFTO6.MCI) 01FEB18

ST. JOSEPH, MISSOURI  
 ROSECRANS MEML (STJ)