

STJ VORTAC	APP CRS	Rwy Idg	8061
115.5	348°	TDZE	815
Chan 102		Apt Elev	827

VOR or TACAN RWY 35

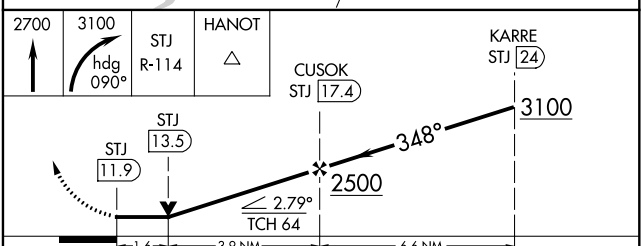
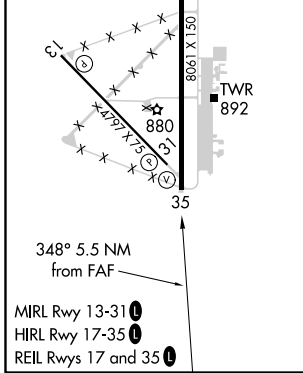
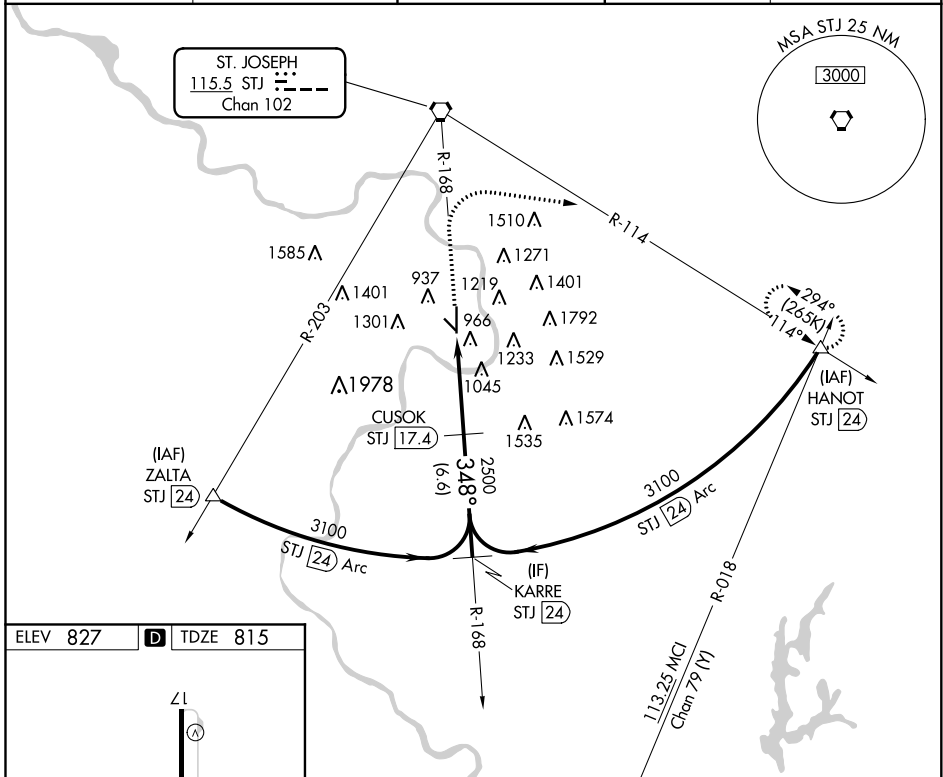
ROSECRANS MEML (STJ)

DME required.

▽
▲
ASR/PAR

MISSED APPROACH: Climb to 2700 then climbing right turn to 3100 on heading 090° and STJ VORTAC R-114 to HANOT/24 DME and hold.

ATIS 125.05	ST. JOSEPH APP CON * 120.35 360.8	ST. JOSEPH TOWER * 126.9 (CTAF) 239.0	GND CON 121.9	UNICOM 122.95
-----------------------	---	---	-------------------------	-------------------------



CATEGORY	A	B	C	D	E
S-35	1360/55	545 (600-1)	1360-1½ 545 (600-1½)	1360-1¾ 545 (600-1¾)	1360-2 545 (600-2)
C CIRCLING	1400-1 573 (600-1)	1420-1 593 (600-1)	1620-2¼ 793 (800-2¼)	1640-2¾ 813 (900-2¾)	1760-3 933 (1000-3)

NC-3, 21 APR 2022 to 19 MAY 2022

NC-3, 21 APR 2022 to 19 MAY 2022