


LOC/DME I-SGF 109.9 Chan 36	APP CRS 019°	Rwy Idg TDZE Apt Elev	7003 1265 1268
---	------------------------	-----------------------------	---

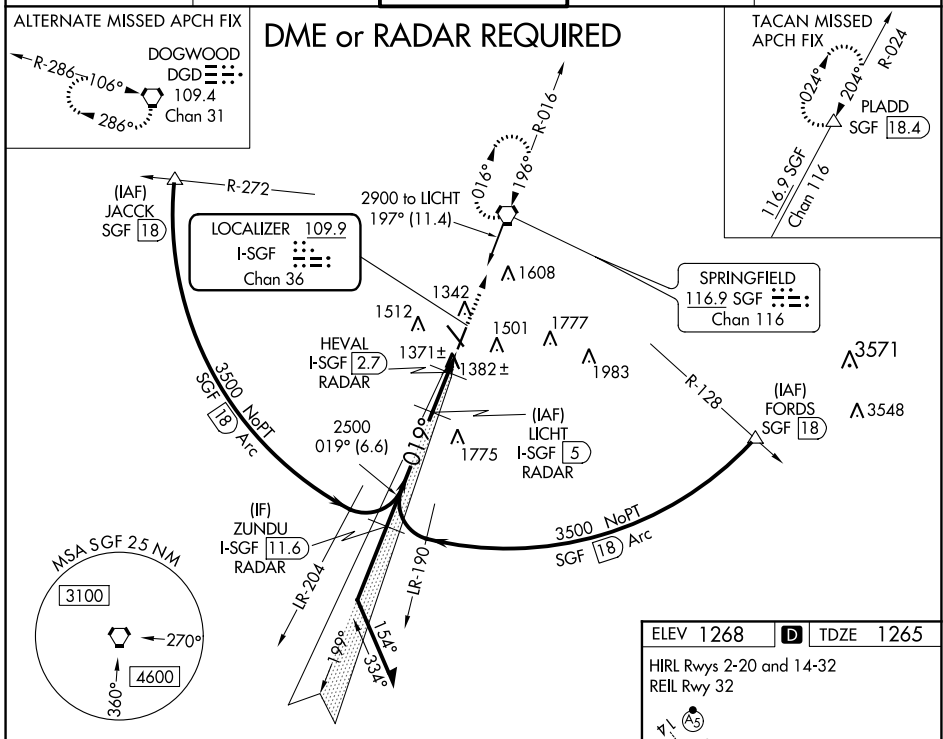
ILS or LOC RWY 2

SPRINGFIELD-BRANSON NTL (SGF)

⚠ DME or RADAR Required. For inop MALSR, increase S-ILS 2 Cat E visibility to RVR 4000, and S-LOC 2 Cat E visibility to 1/4 mile.
#RVR 1800 authorized with use of FD or AP or HUD to DA.

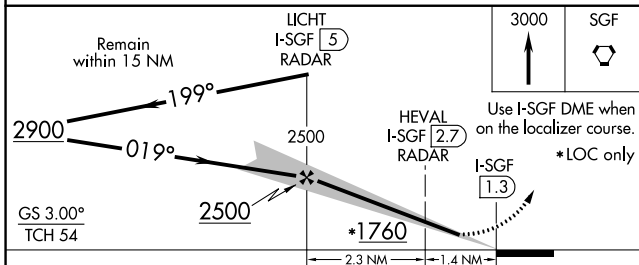
MALSR
 MISSED APPROACH: Climb to 3000 direct SGF VORTAC and hold (TACAN aircraft continue on SGF VORTAC R-024 to PLADD/SGF 18.4 DME and hold northeast, right turn, 204° inbound).

ATIS 135.125	SPRINGFIELD APP CON 121.1 290.5	SPRINGFIELD TOWER 119.9 257.8	GND CON 121.9 251.15	CLNC DEL 123.675
------------------------	---	---	--------------------------------	----------------------------



NC-3, 21 APR 2022 to 19 MAY 2022

NC-3, 21 APR 2022 to 19 MAY 2022



ELEV 1268 **D** TDZE 1265

HIRL Rwy 2-20 and 14-32
REIL Rwy 32

019° 3.7 NM from FAF

Knots	60	90	120	150	180
Min:Sec	3:42	2:28	1:51	1:29	1:14

FAF to MAP 3.7 NM

CATEGORY	A	B	C	D	E
S-ILS 2	#1465/24 200 (200-1/2)				
S-LOC 2	1700/24	435 (500-1/2)	1700/40	435 (500-3/4)	
CIRCLING	1760-1 492 (500-1)	1820-1 552 (600-1)	1820-1 1/2 552 (600-1 1/2)	1920-2 652 (700-2)	2080-3 812 (900-3)