

WAAS CH 40121 W14A	APP CRS 139°	Rwy Idg TDZE 1260 Apt Elev 1268
--	------------------------	---

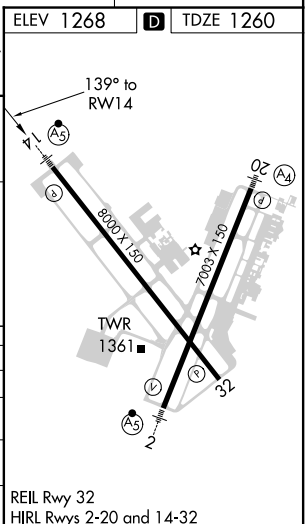
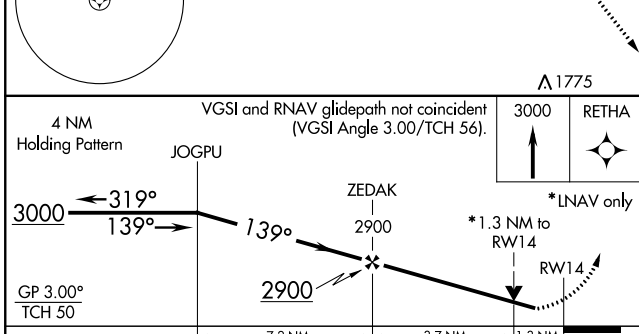
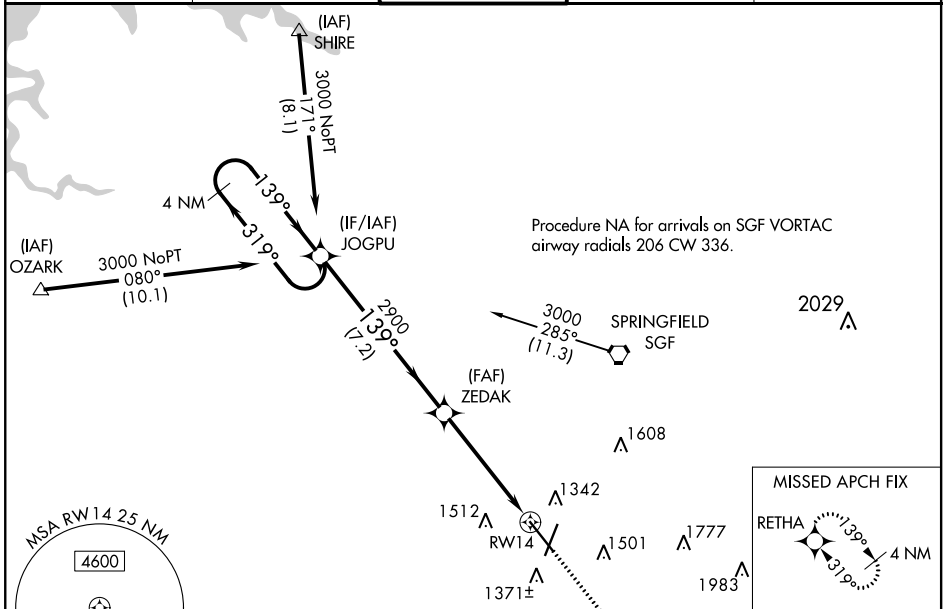
RNAV (GPS) RWY 14

SPRINGFIELD-BRANSON NTL (SGF)

▼ Inoperative table does not apply to LPV all Cats. For uncompensated Baro-VNAV systems, LNAV/VNAV NA below -21°C (-5°F) or above 54°C (130°F). DME/DME RNP-0.3 NA. Helicopter visibility reduction below ¾ SM NA. For inoperative MALSR, increase LNAV/VNAV all Cats visibility to 1½, increase LNAV Cat A/B visibility to 1.

MALSR MISSED APPROACH: Climb to 3000 direct RETHA and hold.

ATIS 135.125	SPRINGFIELD APP CON 121.1 290.5	SPRINGFIELD TOWER 119.9 257.8	GND CON 121.9 251.15	CLNC DEL 123.675
------------------------	---	---	--------------------------------	----------------------------



CATEGORY	A	B	C	D
LPV DA		1518-¾	258 (300-¾)	
LNAV/VNAV DA		1620-¾	360 (400-¾)	
LNAV MDA	1720-¾	460 (500-¾)	1720-7/8	460 (500-7/8)
C CIRCLING	1760-1 492 (500-1)	1820-1 552 (600-1)	1820-1½ 552 (600-1½)	1920-2 652 (700-2)

NC-3, 21 APR 2022 to 19 MAY 2022

NC-3, 21 APR 2022 to 19 MAY 2022