
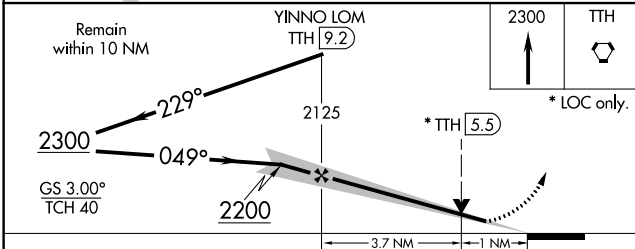
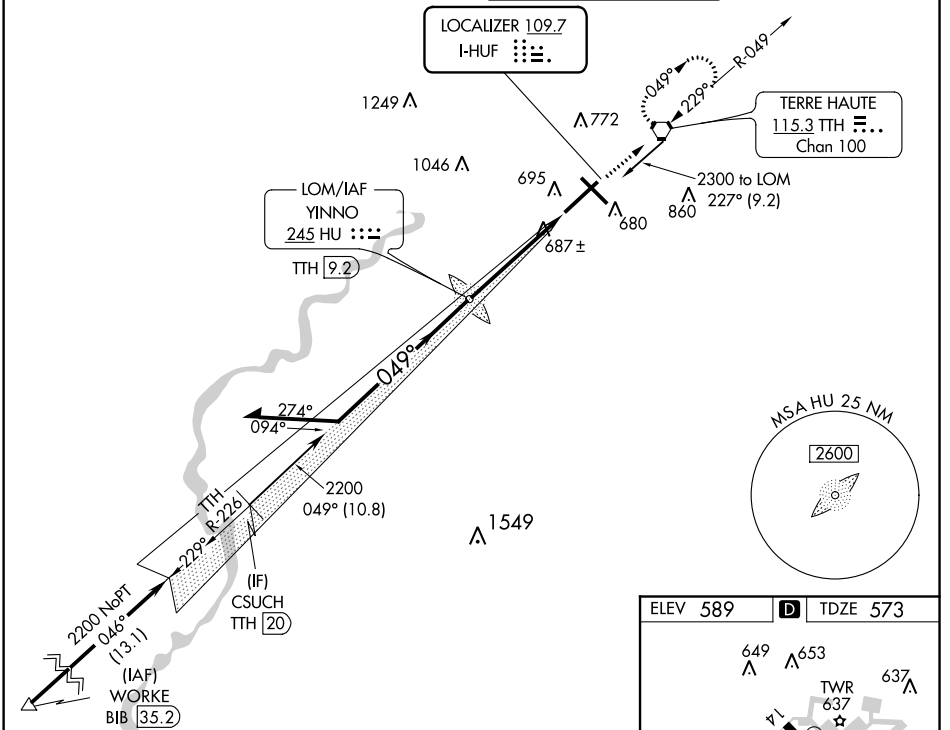


LOC I-HUF 109.7	APP CRS 049°	Rwy Idg TDZE Apt Elev	9020 573 589
---------------------------	------------------------	-----------------------------	---

ILS or LOC RWY 5
TERRE HAUTE RGNL (HUF)

ADF or DME required.		<p>▽ VDP NA when using Paris altimeter setting. When local altimeter setting not received, use Paris altimeter setting and increase all DA 61 feet and all MDA 80 feet, increase S-LOC 5 Cats C/D visibility to RVR 4500. For inop ALS, increase S-LOC 5 Cat C/D visibility to RVR 5500, when using Paris altimeter setting increase S-ILS 5 all Cats visibilities to RVR 4500 and S-LOC Rwy 5 all Cats visibility 1/2 SM. **RVR 1800 authorized with use of FD or AP or HUD to DA, NA when using Paris altimeter setting.</p>		<p>MALS </p>	<p>MISSED APPROACH: Climb to 2300 direct TTH VORTAC and hold.</p>
ATIS 127.5 269.375	HULMAN APP CON 125.45 339.8	HULMAN TOWER 134.725 239.0	GND CON 121.6 348.6		



ELEV 589	D	TDZE 573			
REIL Rwy 14, 23 and 32 HIRL Rwy 5-23 and 14-32 FAF to MAP 4.7 NM					
Knots	60	90	120	150	180
Min:Sec	4:42	3:08	2:21	1:53	1:34

EC-2, 21 APR 2022 to 19 MAY 2022

EC-2, 21 APR 2022 to 19 MAY 2022