

APP CRS	Rwy Idg	7200
137°	TDZE	579
	Apt Elev	589

RNAV (GPS) RWY 14

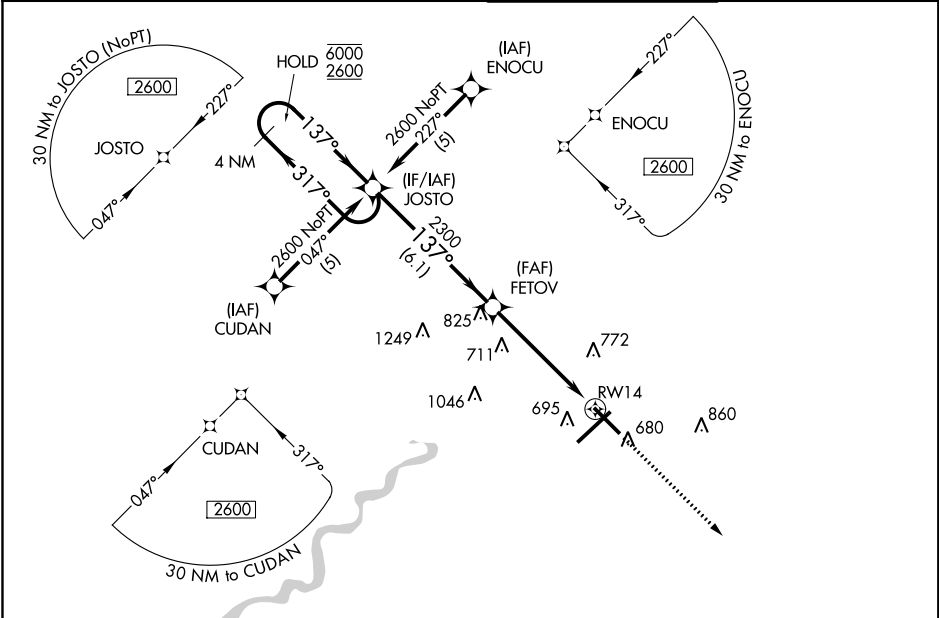
TERRE HAUTE RGNL (HUF')

RNP APCH.

⚠ VDP NA when using Paris altimeter setting. When local altimeter setting not received, use Paris altimeter setting and increase all MDA 80 feet, increase LNAV and Circling Cat C/D visibility 1/4 SM. Rwy 14 helicopter visibility reduction below 3/4 SM NA.

MISSED APPROACH:
Climb to 2600 direct CORIE and hold.

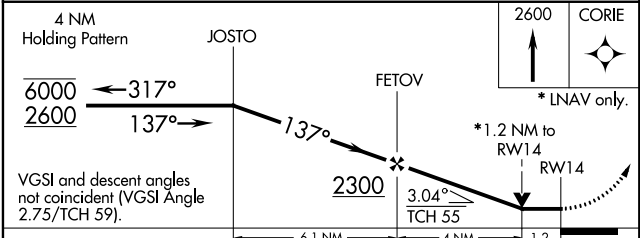
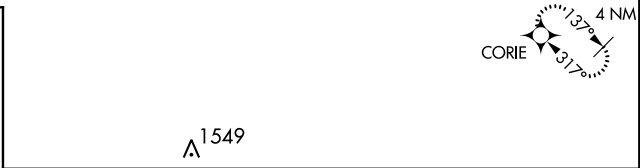
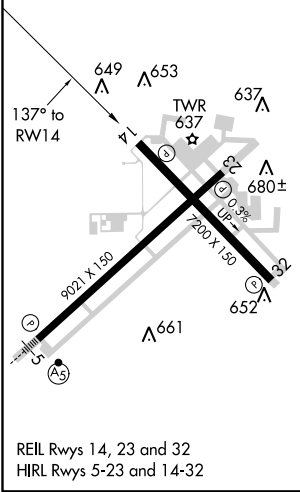
ATIS 127.5 269.375	HULMAN APP CON 125.45 339.8	HULMAN TOWER 134.725 239.0	GND CON 121.6 348.6
------------------------------	---------------------------------------	--------------------------------------	-------------------------------



EC-2, 21 APR 2022 to 19 MAY 2022

EC-2, 21 APR 2022 to 19 MAY 2022

ELEV	589	D	TDZE	579
------	------------	----------	------	------------



VGSI and descent angles not coincident (VGSI Angle 2.75/TCH 59).				
CATEGORY	A	B	C	D
LNAV MDA	1140-1	561 (600-1)	1140-1 5/8	561 (600-1 5/8)
C CIRCLING	1140-1	551 (600-1)	1220-1 3/4 631 (700-1 3/4)	1220-2 631 (700-2)