

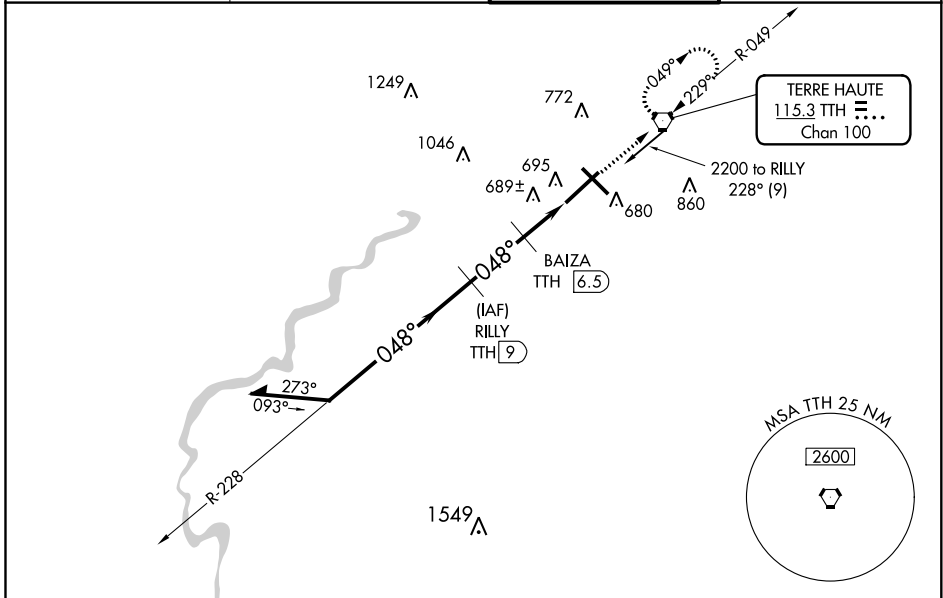
VORTAC TTH 115.3 Chan 100	APP CRS 048°	Rwy Idg TDZE Apt Elev	9020 573 589
---	------------------------	-----------------------------	---

VOR RWY 5

TERRE HAUTE RGNL (HUF)

DME required.		MALSRL 	MISSED APPROACH: Climb to 2300 direct TTH VORTAC and hold.
<p>▽ VDP NA when using Paris, IL altimeter setting. When local altimeter setting not received, use Paris altimeter setting and increase all MDA 80 feet and Circling Cat C/D visibility 1/4 SM. For inop ALS, increase S-5 Cat C/D visibility to RVR 6000. Rwy 5 helicopter visibility reduction below 3/4 SM NA.</p>			

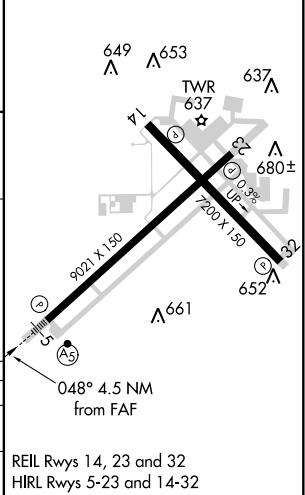
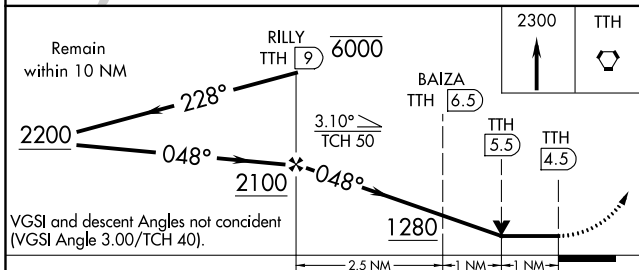
ATIS 127.5 269.375	HULMAN APP CON 125.45 339.8	HULMAN TOWER 134.725 239.0	GND CON 121.6 348.6
------------------------------	---------------------------------------	--------------------------------------	-------------------------------



EC-2, 21 APR 2022 to 19 MAY 2022

EC-2, 21 APR 2022 to 19 MAY 2022

ELEV 589	D	TDZE 573
----------	----------	----------



CATEGORY	A	B	C	D
S-5		960/50	387 (400-1)	
C CIRCLING	1040-1	451 (500-1)	1220-1 3/4 631 (700-1 3/4)	1220-2 631 (700-2)

REIL Rwy 14, 23 and 32
HIRL Rwy 5-23 and 14-32