

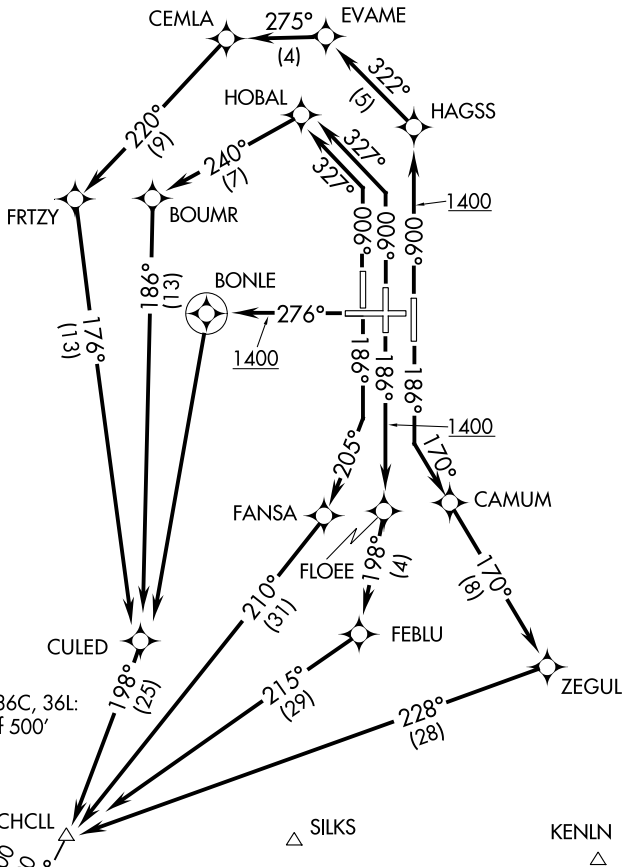
CHCLL FIVE DEPARTURE (RNAV)

D-ATIS  
135.3  
CINCINNATI TOWER  
118.3 (RWYS 18C/36C, 9/27)  
118.975 360.85 (RWY 18L/36R)  
133.325 (RWY 18R/36L)  
GND CON  
121.7  
CLNC DEL  
127.175  
CPDLC  
CINCINNATI DEP CON  
126.65 254.25 (001°-180°)  
128.7 254.25 (181°-360°)

**TOP ALTITUDE:**  
(JETS/PROPS)  
6000 4000

TAKEOFF MINIMUMS:

Rwy 9: NA-ATC.  
Rwys 18L, 18C, 18R, 27, 36R, 36C, 36L:  
Standard with minimum climb of 500'  
per NM to 1400.



- NOTE: If unable to accept climb rates, advise ATC on initial contact.
- NOTE: DME/DME/IRU or GPS required.
- NOTE: Radar required.
- NOTE: RNAV 1.
- NOTE: Transponder code will be issued via PDC or Cincinnati CLNC DEL.
- NOTE: Accelerate to 250K, if unable, advise ATC.

(NARRATIVE ON FOLLOWING PAGE)

NOTE: Chart not to scale.

CHCLL FIVE DEPARTURE (RNAV)

SE-1, 21 APR 2022 to 19 MAY 2022

SE-1, 21 APR 2022 to 19 MAY 2022