

HAGOL FOUR DEPARTURE (RNAV)

AL-655 (FAA)

COVINGTON, KENTUCKY

D-ATIS DEP 135.3  
 CLNC DEL  
 127.175  
 CPDLC  
 CINCINNATI TOWER  
 118.3 (RWYS 18C/36C, 9/27)  
 118.975 360.85 (RWY 18L/36R)  
 133.325 (RWY 18R/36L)  
 GND CON  
 121.7  
 CINCINNATI DEP CON  
 126.65 254.25 (001°-180°)  
 128.7 254.25 (181°-360°)

NOTE: If unable to accept climb rates, advise ATC on initial contact.  
 NOTE: DME/DME/IRU or GPS Required.  
 NOTE: Radar required.  
 NOTE: RNAV 1.  
 NOTE: Accelerate to 250 KIAS, if unable, advise ATC.  
 NOTE: Transponder code will be issued via PDC or Cincinnati CLNC DEL.

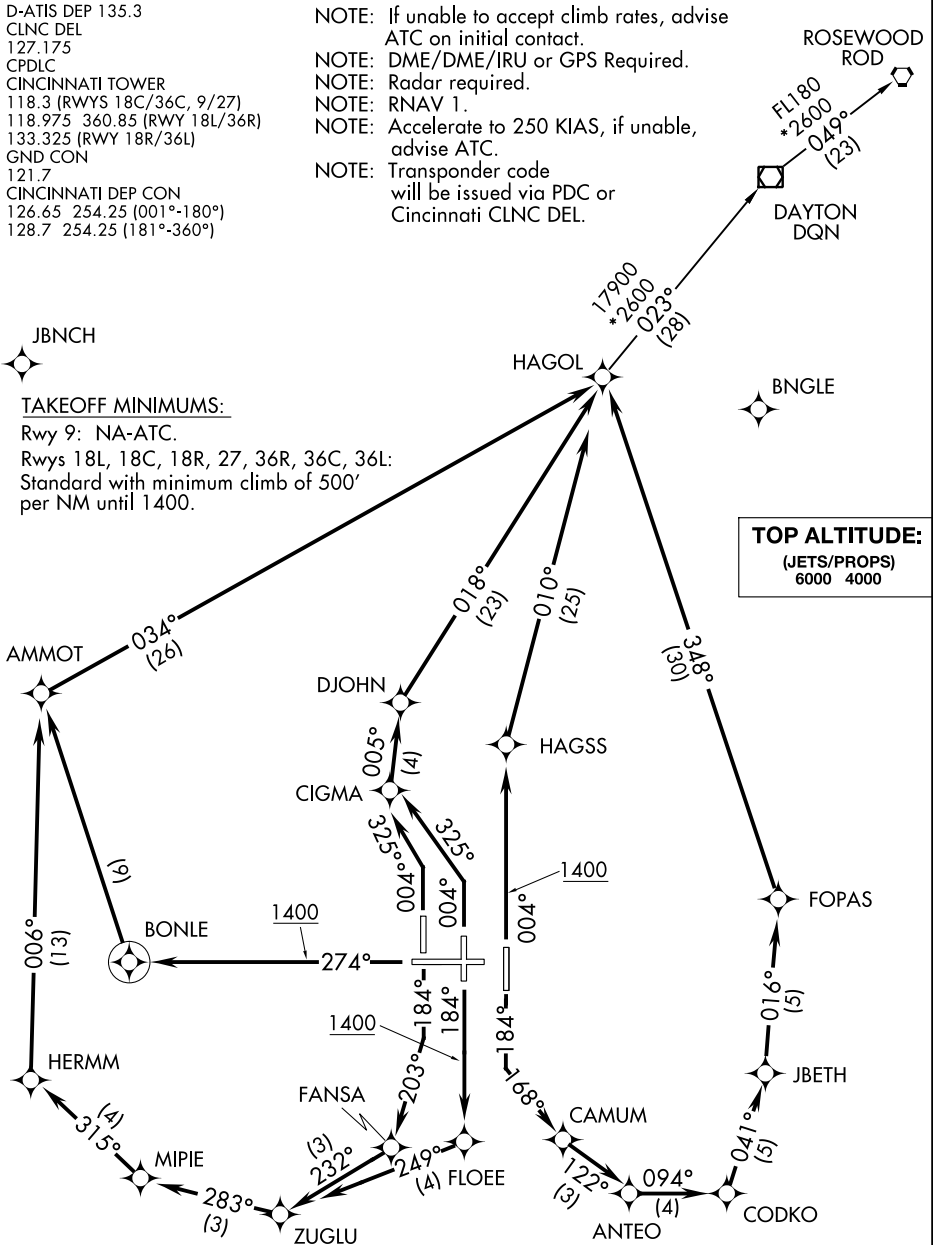
JBNCH

TAKEOFF MINIMUMS:

Rwy 9: NA-ATC.  
 Rwys 18L, 18C, 18R, 27, 36R, 36C, 36L:  
 Standard with minimum climb of 500' per NM until 1400.

BNGLE

**TOP ALTITUDE:**  
 (JETS/PROPS)  
 6000 4000



NOTE: Chart not to scale.

(NARRATIVE ON FOLLOWING PAGE)

SE-1, 21 APR 2022 to 19 MAY 2022

SE-1, 21 APR 2022 to 19 MAY 2022