

LOC/DME I-SIC <b>111.55</b> Chan <b>52 (Y)</b>	APP CRS <b>186°</b>	Rwy Idg TDZE <b>875</b> Apt Elev <b>896</b>	<b>11000</b>
--	------------------------	---	--------------

# ILS RWY 18C (SA CAT I & II)

CINCINNATI/NORTHERN KENTUCKY INTL (CVG)

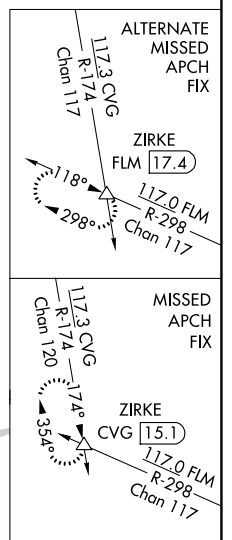
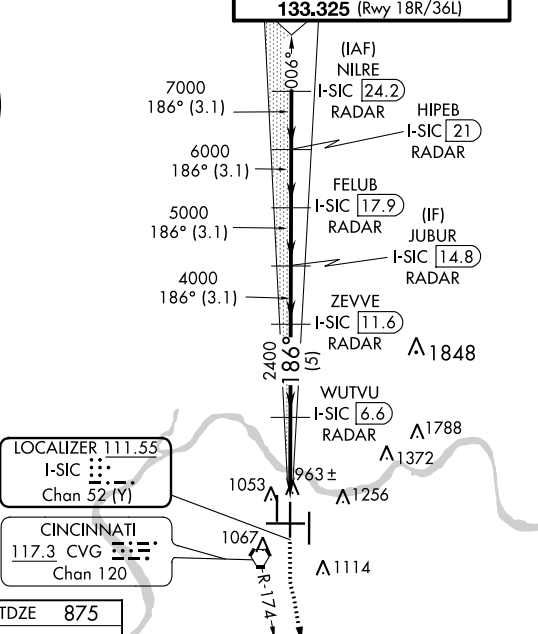
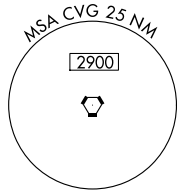
**RADAR required for procedure entry. DME or RADAR required.**

Simultaneous approach authorized. SA CAT I: Requires specific OPSPEC, MSPEC, or LOA approval and use of HUD to DH.  
SA CAT II: Reduced Lighting: Requires specific OPSPEC, MSPEC, or LOA approval and use of autoland or HUD to touchdown.

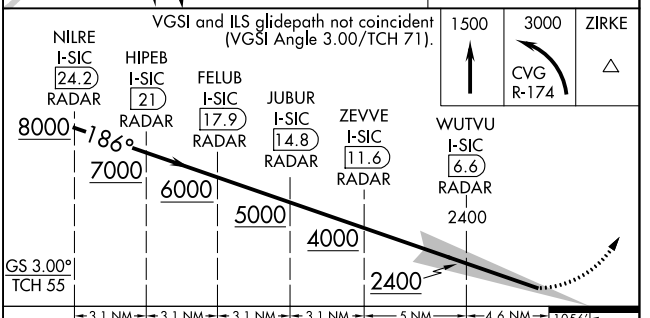
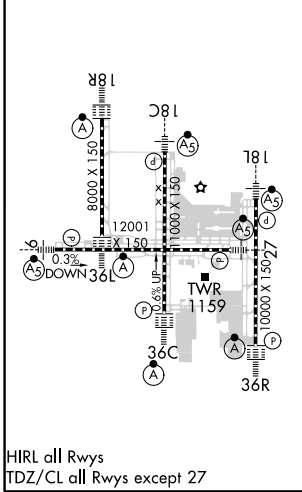
**MALSR**

MISSED APPROACH: Climb to 1500 then climbing left turn to 3000 on CVG R-174 to ZIRKE INT/CVG 15.1 DME and hold.

D-ATIS ARR <b>134.375</b> DEP <b>135.3</b>	CINCINNATI APP CON <b>119.7 363.15</b> (090°-269°) <b>123.875 363.15</b> (270°-089°)	CINCINNATI TOWER <b>118.975 360.85</b> (Rwy 18L/36R) <b>118.3</b> (Rwys 18C/36C, 09/27) <b>133.325</b> (Rwy 18R/36L)	GND CON <b>121.7</b>	CLNC DEL <b>127.175</b>	CPDLC
---	--	---	-------------------------	----------------------------	-------



ELEV <b>896</b>	<b>D</b>	TDZE <b>875</b>
-----------------	----------	-----------------



CATEGORY	A	B	C	D
S-ILS 18C	SA CAT I	RA 191/16	150 DA 1025	
S-ILS 18C	SA CAT II	RA 100/12	100 DA 975	

**SA CATEGORY I & II ILS-SPECIAL AIRCREW & AIRCRAFT CERTIFICATION REQUIRED**

SE-1, 21 APR 2022 to 19 MAY 2022

SE-1, 21 APR 2022 to 19 MAY 2022