

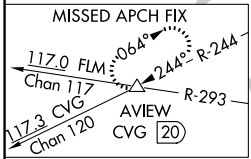
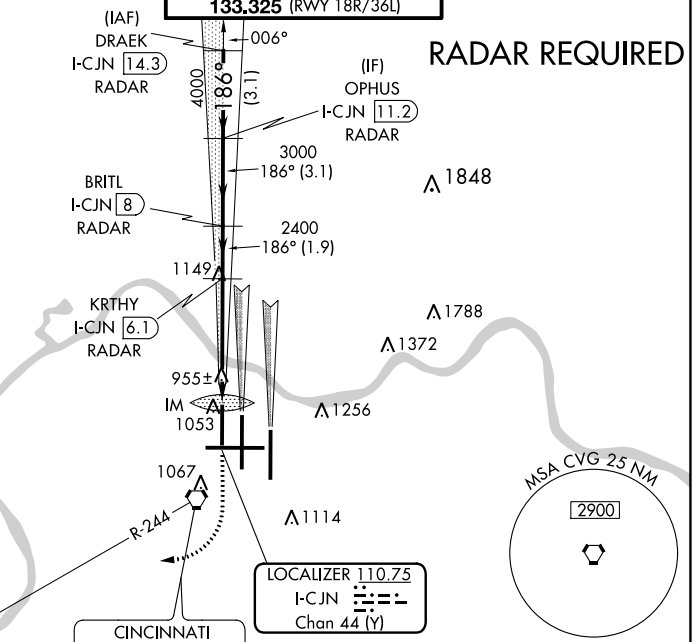
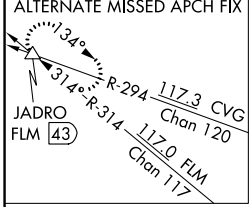
LOC/DME I-CJN 110.75 Chan 44 (Y)	APP CRS 186°	Rwy Idg TDZE Apt Elev 8000 868 896
--	------------------------	--

ILS RWY 18R (CAT II)

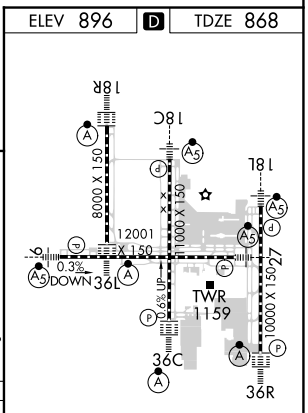
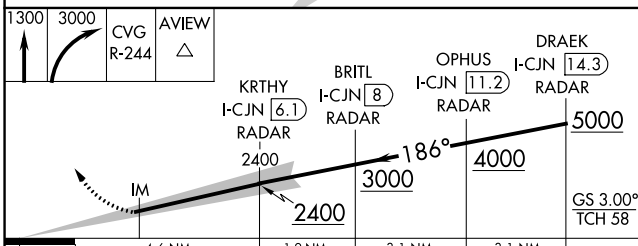
CINCINNATI/NORTHERN KENTUCKY INTL (CVG)

⚠ Simultaneous approach authorized with Rwy 18C and 18L. **ALSIF-2** MISSED APPROACH: Climb to 1300 then climbing right turn to 3000 via CVG R-244 to AVIEW INT/ CVG 20 DME and hold.

D-ATIS ARR 134.375 DEP 135.3	CINCINNATI APP CON 119.7 363.15 (090°-269°) 123.875 363.15 (270°-089°)	CINCINNATI TOWER 118.975 360.85 (RWY 18L/36R) 118.3 (RWYS 18C/36C, 09/27) 133.325 (RWY 18R/36L)	GND CON 121.7	CLNC DEL 127.175	CPDLC
---	--	---	-------------------------	----------------------------	-------



ELEV 896	D	TDZE 868
----------	----------	----------



CATEGORY	A	B	C	D
S-ILS-18R		RA 113/12	100	DA 968

CATEGORY II ILS - SPECIAL AIRCREW & AIRCRAFT CERTIFICATION REQUIRED

HIRL all Rwys
TDZ/CL all Rwys except 27

SE-1, 21 APR 2022 to 19 MAY 2022

SE-1, 21 APR 2022 to 19 MAY 2022