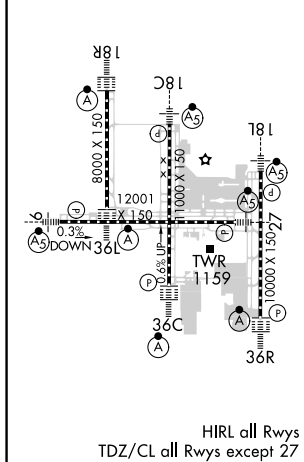
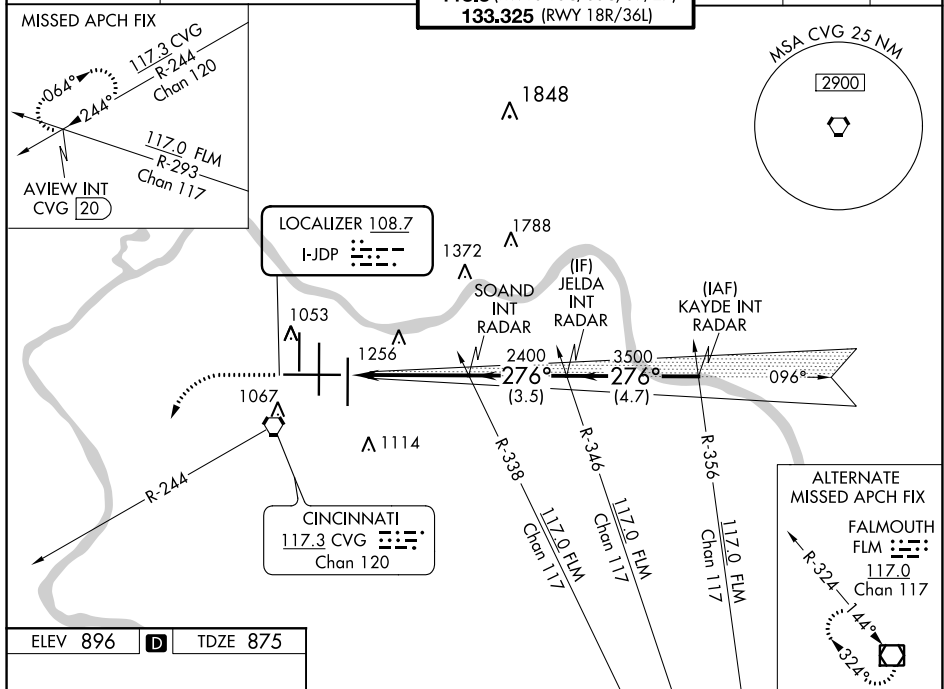


LOC I-JDP	APP CRS	Rwy Idg	<b>12001</b>
<b>108.7</b>	<b>276°</b>	TDZE	<b>875</b>
		Apt Elev	<b>896</b>

# ILS RWY 27 (SA CAT I & II)

CINCINNATI/NORTHERN KENTUCKY INTL (CVG)

RADAR required for procedure entry.		MALSR 	MISSED APPROACH: Climb to 2000 then climbing left turn to 3000 on heading 230° and CVG R-244 to AVIEW INT/CVG 20 DME and hold.			
SA Cat I & II: Requires specific OPSPEC, MSPEC, or LOA approval.			GND CON	CLNC DEL	CPDLC	
D-ATIS	CINCINNATI APP CON	CINCINNATI TOWER		GND CON	CLNC DEL	CPDLC
ARR <b>134.375</b>	DEP <b>135.3</b>	<b>119.7 363.15</b> (090°-269°) <b>123.875 363.15</b> (270°-089°)		<b>121.7</b>	<b>127.175</b>	
		<b>118.3</b> (RWYS 18C/36C, 09/27) <b>133.325</b> (RWY 18R/36L)				



2000	3000	CVG R-244	AVIEW INT	VGSi and ILS glidepath not coincident (VGSi Angle 3.00/TCH 67).			
hdg 230°		SOAND INT RADAR 2400		JELDA INT RADAR 3500		KAYDE INT RADAR 5000	
		2400		3500		5000	
		4.6 NM		3.5 NM		4.7 NM	
GS 3.00° TCH 55							
CATEGORY	A	B	C	D			
S-ILS 27	SA CAT I		RA 137/14	150 DA 1025			
S-ILS 27	SA CAT II		RA 90/12	100 DA 975			

**SA CATEGORY I & II ILS - SPECIAL AIRCREW & AIRCRAFT CERTIFICATION REQUIRED**

SE-1, 21 APR 2022 to 19 MAY 2022

SE-1, 21 APR 2022 to 19 MAY 2022