

LOC/DME I-VAC 110.75 Chan 44 (Y)	APP CRS 006°	Rwy Idg TDZE Apt Elev 8000 873 896
--	------------------------	--

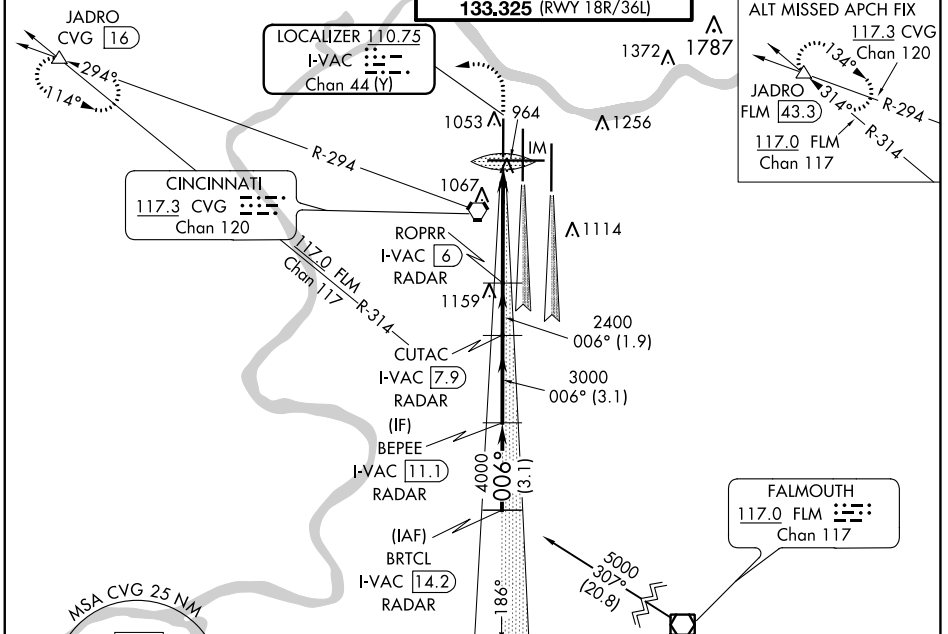
ILS RWY 36L (CAT II)
CINCINNATI/NORTHERN KENTUCKY INTL (CVG)

Simultaneous approach authorized with Rwy 36C and 36R. DME required.

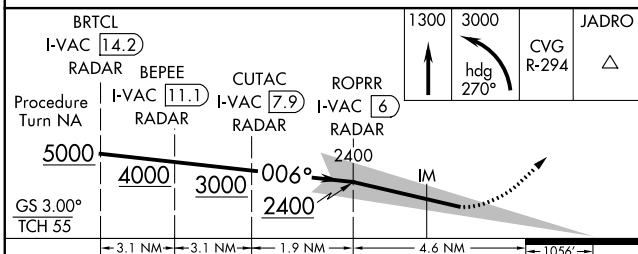
ALSF-2

MISSED APPROACH: Climb to 1300 then climbing left turn to 3000 via heading 270° and CVG R-294 to JADRO/CVG 16 DME and hold.

D-ATIS ARR 134.375 DEP 135.3	CINCINNATI APP CON 119.7 363.15 (090°-269°) 123.875 363.15 (270°-089°)	CINCINNATI TOWER 118.975 360.85 (RWY 18L/36R) 118.3 (RWYS 18C/36C, 09/27) 133.325 (RWY 18R/36L)	GND CON 121.7	CLNC DEL 127.175	CPDLC
---	--	---	-------------------------	----------------------------	-------

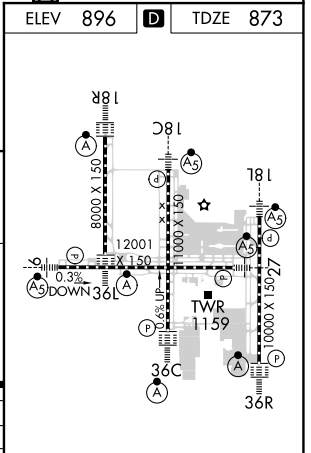
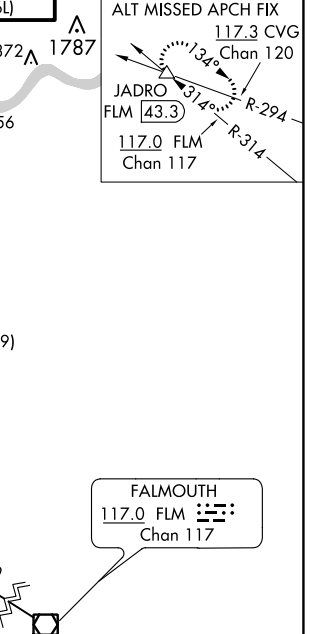


DME or RADAR REQUIRED



CATEGORY	A	B	C	D
S-ILS-36L	RA 98/12 100 DA 973			

CATEGORY II ILS - SPECIAL AIRCREW & AIRCRAFT CERTIFICATION REQUIRED



SE-1, 21 APR 2022 to 19 MAY 2022

SE-1, 21 APR 2022 to 19 MAY 2022

HIRL all Rwys
TDZ/CL all Rwys except 27