

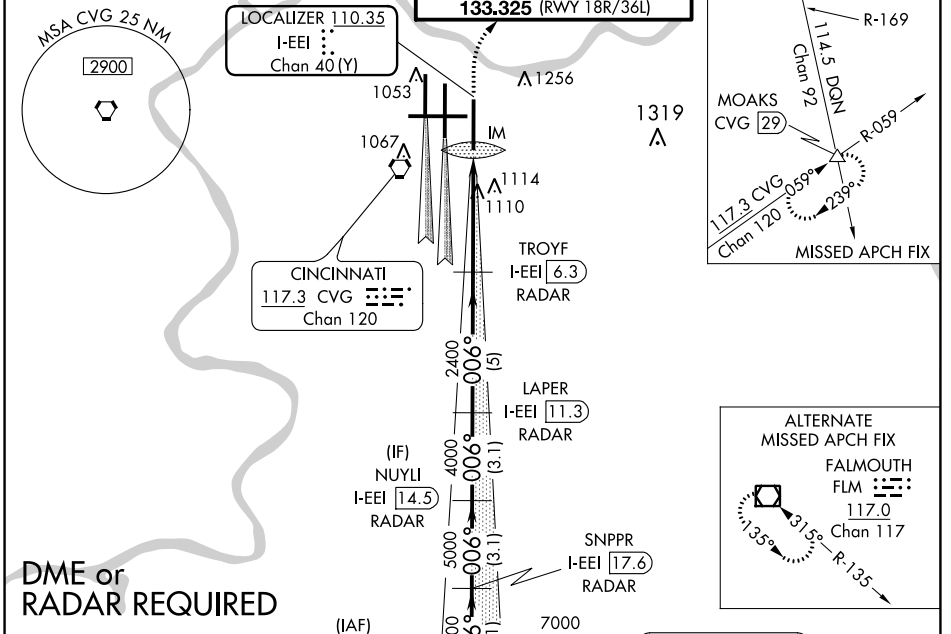
LOC/DME I-EEI <b>110.35</b> Chan 40 (Y)	APP CRS <b>006°</b>	Rwy Idg TDZE Apt Elev <b>10000</b> <b>896</b> <b>896</b>
---	------------------------	---

# ILS RWY 36R (CAT II & III)

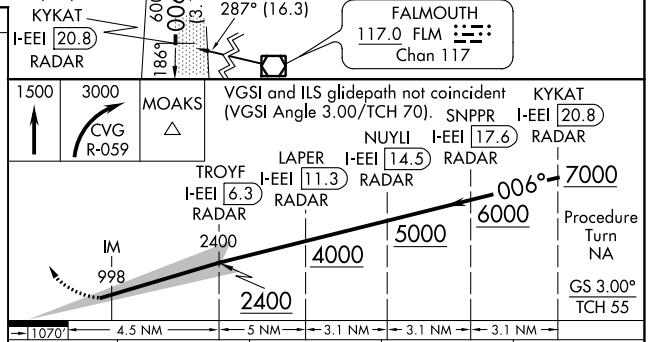
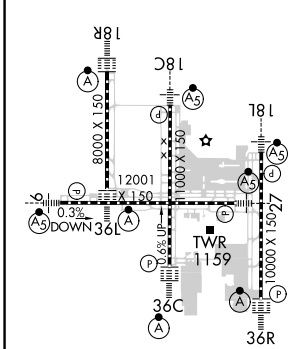
CINCINNATI/NORTHERN KENTUCKY INTL (CVG)

	ALSIF-2 	MISSED APPROACH: Climb to 1500 then climbing right turn to 3000 via CVG R-059 to MOAKS Int/ CVG 29 DME and hold.

D-ATIS ARR <b>134.375</b> DEP <b>135.3</b>	CINCINNATI APP CON <b>119.7 363.15</b> (090°-269°) <b>123.875 363.15</b> (270°-089°)	CINCINNATI TOWER <b>118.975 360.85</b> (RWY 18L/36R) <b>118.3</b> (RWYS 18C/36C, 09/27) <b>133.325</b> (RWY 18R/36L)	GND CON <b>121.7</b>	CLNC DEL <b>127.175</b>	CPDLC
---	--	---	-------------------------	----------------------------	-------



ELEV 896	<b>D</b>	TDZE 896
----------	----------	----------



10707	4.5 NM	5 NM	3.1 NM	3.1 NM	3.1 NM
CATEGORY	A	B	C	D	D
S-ILS 36R	CAT II RA 98/12 100 DA 996				
S-ILS 36R	CAT IIIa RVR 07				
S-ILS 36R	CAT IIIb RVR 06				
S-ILS 36R	CAT IIIc NA				

## CATEGORY II & III ILS - SPECIAL AIRCREW & AIRCRAFT CERTIFICATION REQUIRED

SE-1, 21 APR 2022 to 19 MAY 2022

SE-1, 21 APR 2022 to 19 MAY 2022