

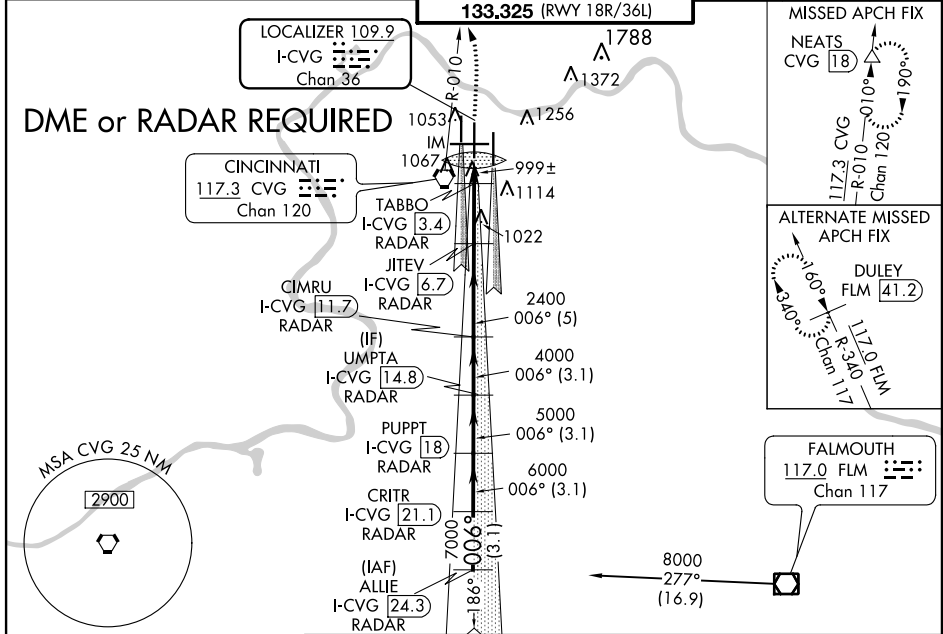
LOC/DME I-CVG 109.9 Chan 36	APP CRS 006°	Rwy Idg 11000 TDZE 851 Apt Elev 896
---	------------------------	--

ILS or LOC RWY 36C

CINCINNATI/NORTHERN KENTUCKY INTL (CVG)

▽ Simultaneous approach authorized with Rwy 36L/R. △ DME required.	ALSF-2 	MISSED APPROACH: Climb to 1500 then climbing left turn to 3000 via CVG R-010 to NEATS/CVG 18 DME and hold.
---	------------	--

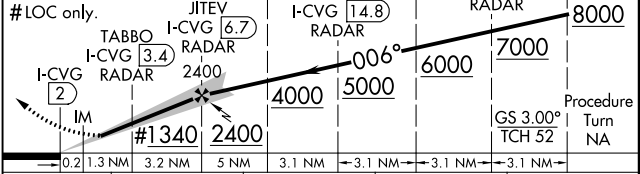
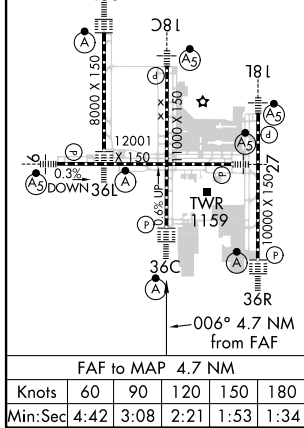
D-ATIS ARR 134.375 DEP 135.3	CINCINNATI APP CON 119.7 363.15 (090°-269°) 123.875 363.15 (270°-089°)	CINCINNATI TOWER 118.975 360.85 (RWY 18L/36R) 118.3 (RWYS 18C/36C, 09/27) 133.325 (RWY 18R/36L)	GND CON 121.7	CLNC DEL 127.175	CPDLC
---	--	---	-------------------------	----------------------------	-------



SE-1, 21 APR 2022 to 19 MAY 2022

SE-1, 21 APR 2022 to 19 MAY 2022

ELEV 896	D TDZE 851	1500	3000	NEATS	VGSI and ILS glidepath not coincident (VGSI Angle 3.00/TCH 77).	ALLIE I-CVG [24.3]
TDZ/CL all Rwy's except 27 HIRL all Rwy's		↑	CVG R-010			



CATEGORY	A	B	C	D
S-ILS 36C	1051/18 200 (200-½)			
S-LOC 36C	1340/24	489 (500-½)	1340/50	489 (500-1)
CIRCLING	1460-1	564 (600-1)	1560-1¾ 664 (700-1¾)	1560-2 664 (700-2)
TABBO FIX MINIMUMS				
S-LOC 36C	1260/24	409 (400-½)	1260/40	409 (400-¾)
CIRCLING	1460-1	564 (600-1)	1560-1¾ 664 (700-1¾)	1560-2 664 (700-2)