

LOC/DME I-VAC 110.75 Chan 44 (Y)	APP CRS 006°	Rwy Idg 8000
		TDZE 873
		Apt Elev 896

ILS or LOC RWY 36L

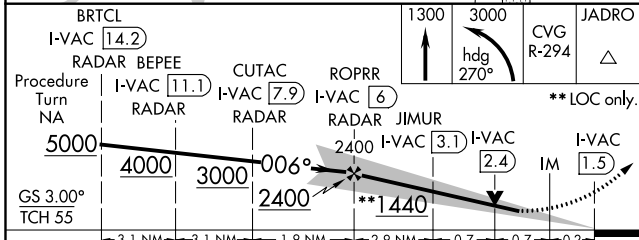
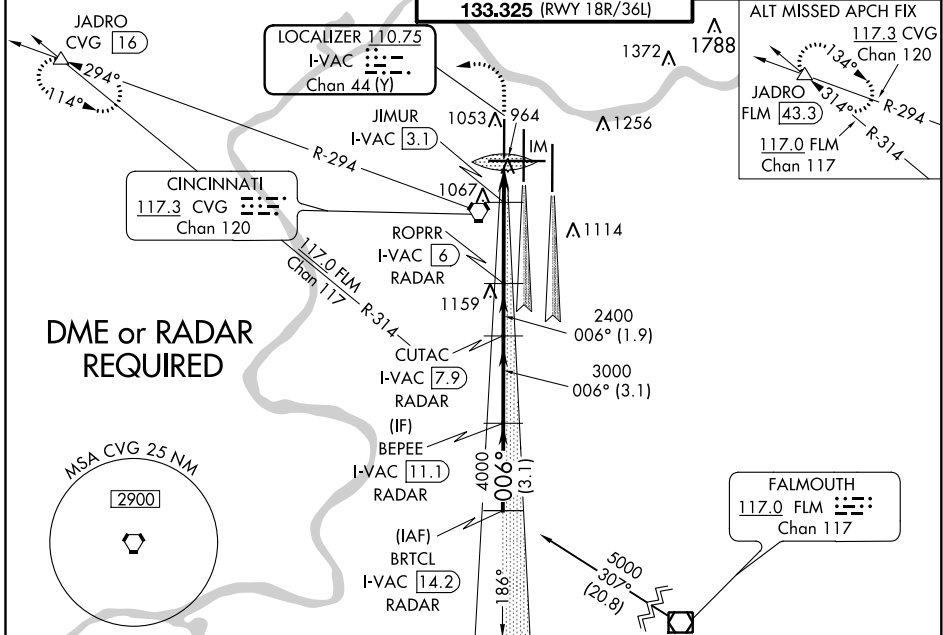
CINCINNATI/NORTHERN KENTUCKY INTL (CVG)

Simultaneous approach authorized with Rwy 36C and 36R. DME required.

ALSIF-2

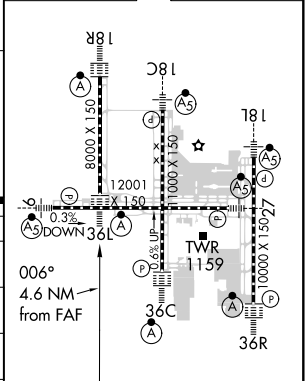
MISSED APPROACH: Climb to 1300 then climbing left turn to 3000 via heading 270° and CVG R-294 to JADRO/CVG 16 DME and hold.

D-ATIS ARR 134.375 DEP 135.3	CINCINNATI APP CON 119.7 363.15 (090°-269°) 123.875 363.15 (270°-089°)	CINCINNATI TOWER 118.975 360.85 (RWY 18L/36R) 118.3 (RWYS 18C/36C, 09/27) 133.325 (RWY 18R/36L)	GND CON 121.7	CLNC DEL 127.175	CPDLC
---	--	---	-------------------------	----------------------------	-------



BRTCL I-VAC 14.2	1300	3000	CVG R-294	JADRO	ELEV 896	TDZE 873
------------------	------	------	-----------	-------	----------	----------

Procedure Turn NA	I-VAC 11.1	I-VAC 7.9	I-VAC 6	I-VAC 3.1	I-VAC 2.4	I-VAC 1.5
5000	4000	3000	006°	2400	**1440	2400
GS 3.00°						
TCH 55						
CATEGORY	A	B	C	D		
S-ILS 36L	1073/18		200 (200-½)			
S-LOC 36L	1440/24	567 (600-½)	1440/60	567 (600-1¼)		
CIRCLING	1460-1	564 (600-1)	1560-1¾	664 (700-1¾)	1560-2	664 (700-2)
JIMUR FIX MINIMUMS						
S-LOC 36L	1220/24	347 (400-½)	1220/30	347 (400-¾)		
CIRCLING	1460-1	564 (600-1)	1560-1¾	664 (700-1¾)	1560-2	664 (700-2)



SE-1, 21 APR 2022 to 19 MAY 2022

SE-1, 21 APR 2022 to 19 MAY 2022

Knots	60	90	120	150	180
Min:Seq	4:36	3:04	2:18	1:50	1:32