

LOC/DME I-URN 111.9 Chan 56	APP CRS 096°	Rwy Idg 12001 TDZE 883 Apt Elev 896
---	------------------------	--

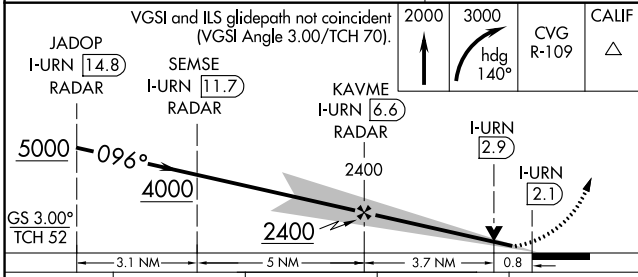
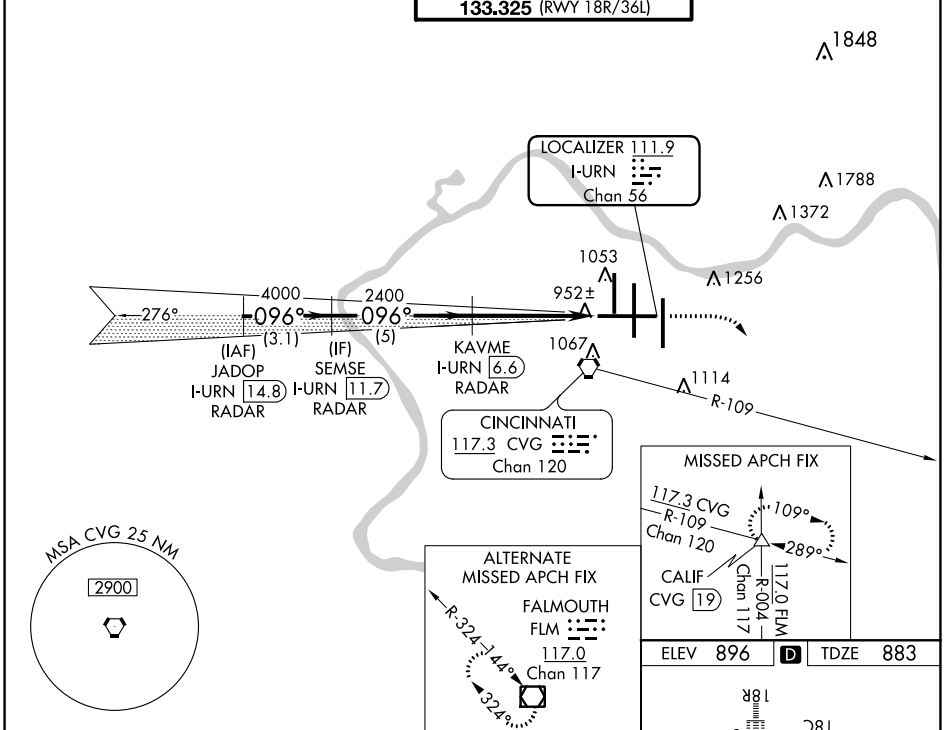
ILS or LOC RWY 9

CINCINNATI/NORTHERN KENTUCKY INTL (CVG)

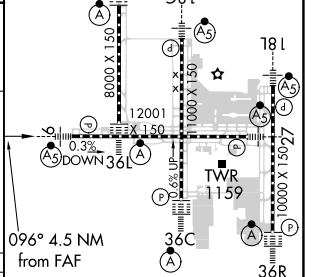
RADAR required for procedure entry. DME or RADAR required.
 For inop ALS increase S-LOC 9 Cats C/D visibility to RVR 5500.

MALS MISSED APPROACH: Climb to 2000 then climbing right turn to 3000 on heading 140° and CVG R-109 to CALIF INT/CVG 19 DME and hold.

D-ATIS ARR 134.375 DEP 135.3	CINCINNATI APP CON 119.7 363.15 (090°-269°) 123.875 363.15 (270°-089°)	CINCINNATI TOWER 118.975 360.85 (RWY 18L/36R) 118.3 (RWYS 18C/36C, 09/27) 133.325 (RWY 18R/36L)	GND CON 121.7	CLNC DEL 127.175	CPDLC
---	--	---	-------------------------	----------------------------	-------



ELEV 896	TDZE 883
-----------------	-----------------



CATEGORY	A	B	C	D
S-ILS 9	1083/18		200 (200-½)	
S-LOC 9	1220/24		337 (400-½)	
CIRCLING	1460-1 564 (600-1)		1560-1¾ 664 (700-1¾)	
			1560-2 664 (700-2)	

HRL all Rwy's					
TDZ/CL all Rwy's except 27					
FAF to MAP 4.5 NM					
Knots	60	90	120	150	180
Min:Sec	4:30	3:00	2:15	1:48	1:30

SE-1, 21 APR 2022 to 19 MAY 2022

SE-1, 21 APR 2022 to 19 MAY 2022