

(KENLN5.KENLN) 22027

KENLN FIVE DEPARTURE (RNAV)

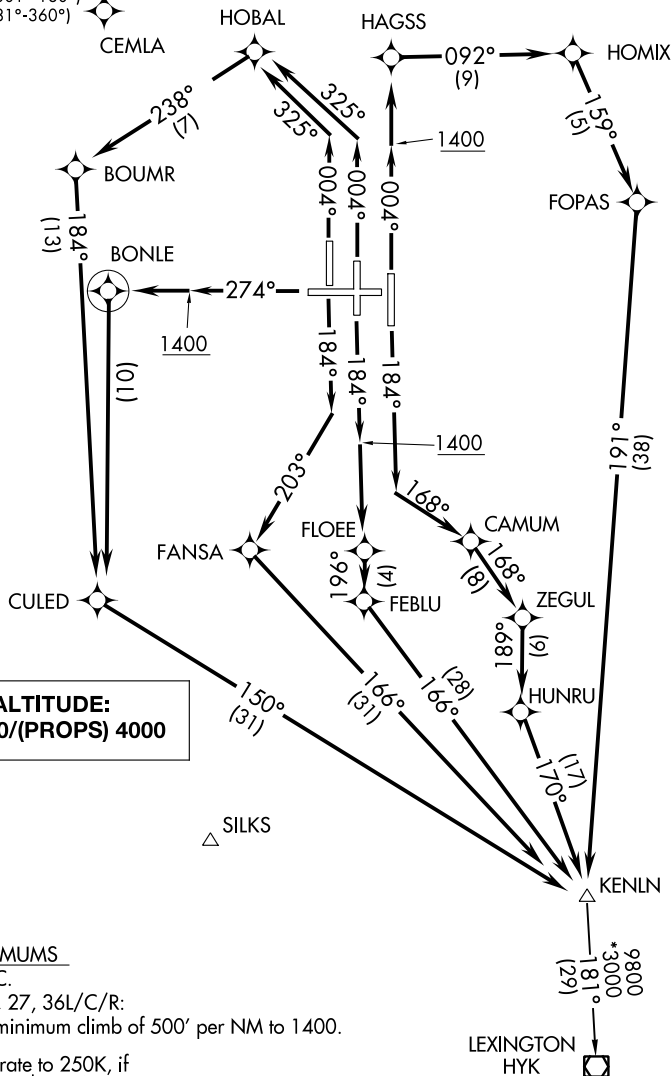
CINCINNATI/NORTHERN KENTUCKY INTL (CVG)

AL-655 (FAA)

COVINGTON, KENTUCKY

D-ATIS DEP 135.3
 CLNC DEL 127.175
 CPDLC
 GND CON 121.7
 CINCINNATI TOWER
 118.3 360.85 (RWYS 18C/36C, 9/27)
 118.975 360.85 (RWY 18L/36R)
 133.325 360.85 (RWY 18R/36L)
 CINCINNATI DEP CON
 126.65 254.25 (001°-180°)
 128.7 254.25 (181°-360°)

NOTE: If unable to accept climb rates, advise ATC on initial contact.
 NOTE: DME/DME/IRU or GPS required.
 NOTE: RADAR required.
 NOTE: RNAV 1.
 NOTE: Transponder code will be issued via PDC or Cincinnati CLNC DEL.



NOTE: Chart not to scale.

(NARRATIVE ON FOLLOWING PAGE)

KENLN FIVE DEPARTURE (RNAV)
 (KENLN5.KENLN) 20JUN19

COVINGTON, KENTUCKY
 CINCINNATI/NORTHERN KENTUCKY INTL (CVG)

SE-1, 21 APR 2022 to 19 MAY 2022

SE-1, 21 APR 2022 to 19 MAY 2022