

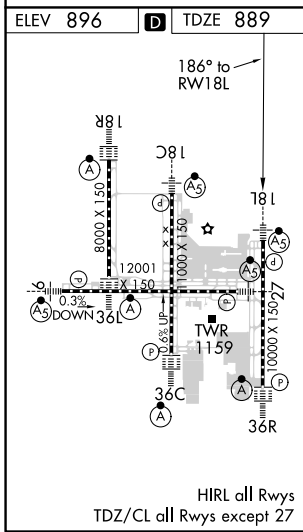
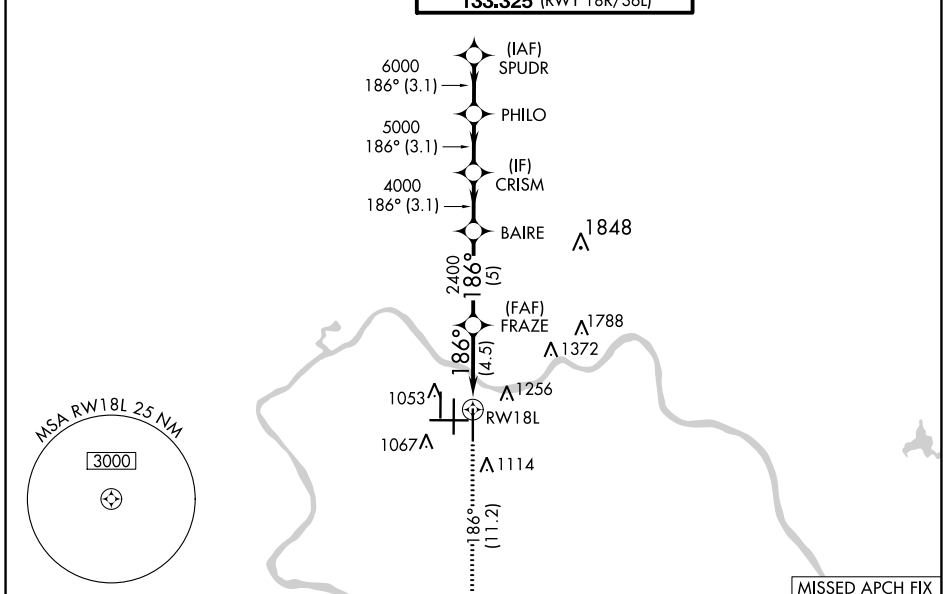
APP CRS	Rwy Idg	10000
186°	TDZE	889
	Apt Elev	896

RNAV (RNP) Z RWY 18L

CINCINNATI/NORTHERN KENTUCKY INTL (CVG)

RNP AR APCH - GPS.	MALSR	MISSED APPROACH: Climb to 3000 on track 186° to LAPER and on track 136° to FLM VOR/DME and hold.
Simultaneous approach authorized. For uncompensated Baro-VNAV systems, procedure NA below -16°C or above 47°C. For inop ALS, increase RNP 0.25 all Cats visibility to RVR 6000, RNP 0.30 all Cats visibility to 1½ SM.	ALS	

D-ATIS	CINCINNATI APP CON	CINCINNATI TOWER	GND CON	CLNC DEL	CPDLC
ARR 134.375 DEP 135.3	119.7 363.15 (090°-269°) 123.875 363.15 (270°-089°)	118.975 360.85 (RWY 18L/36R) 118.3 (RWYS 18C/36C, 09/27) 133.325 (RWY 18R/36L)	121.7	127.175	



ELEV 896	D	TDZE 889				
3000	↑ tr 186°	LAPER	tr 136°	FLM	VGSi and RNAV glidepath not coincident (VGSi Angle 3.00/TCH 71).	
		FRAZE	BAIRE	CRISM	PHILO	SPUDR
		2400	4000	5000	6000	7000
		4.5 NM	5 NM	3.1 NM	3.1 NM	3.1 NM
CATEGORY	A	B	C	D		
RNP 0.25 DA		1283/35	394 (400-¾)			
RNP 0.30 DA		1472-1¼	583 (600-1¼)			
					GP 3.00°	TCH 55

AUTHORIZATION REQUIRED

SE-1, 21 APR 2022 to 19 MAY 2022

SE-1, 21 APR 2022 to 19 MAY 2022