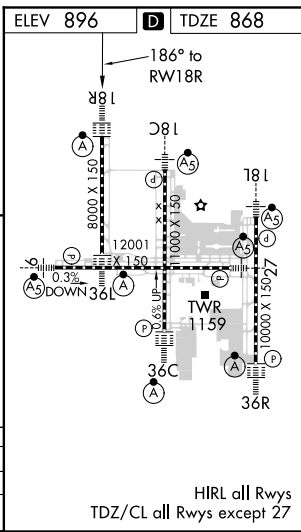
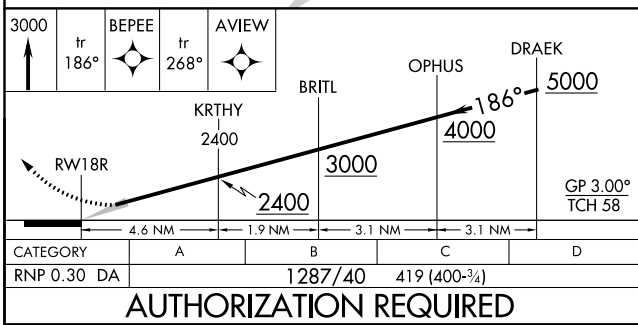
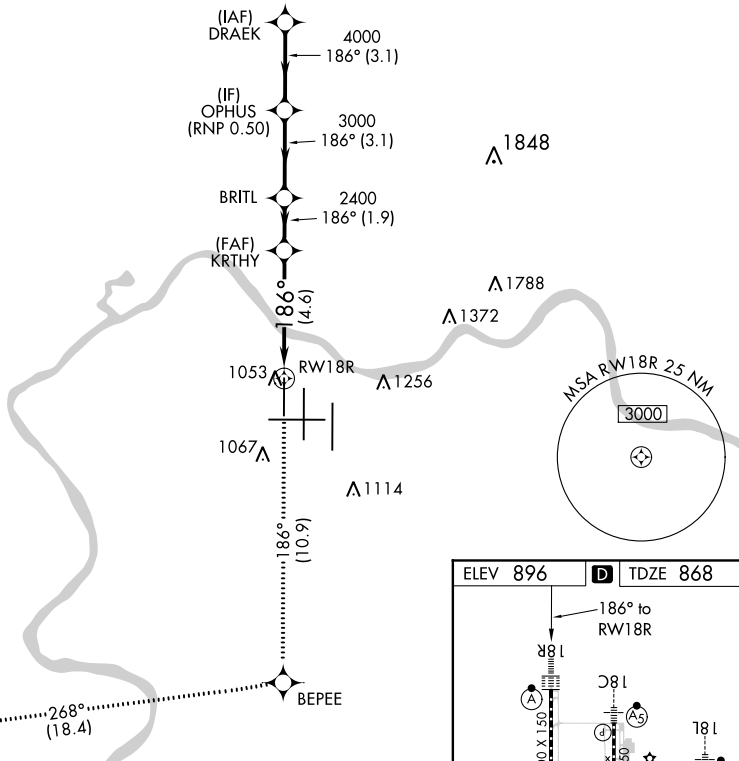


APP CRS	Rwy Idg	8000
186°	TDZE	868
	Apt Elev	896

RNAV (RNP) Z RWY 18R

CINCINNATI/NORTHERN KENTUCKY INTL (CVG)

RNP AR APCH - GPS.		ALSIF-2	MISSED APPROACH: Climb to 3000 on track 186° BEPEE and on track 268° to AVIEW and hold.			
<p>▼ Use of FD or AP required during simultaneous operations. Simultaneous approach authorized with Rwy 18C/L. For uncompensated Baro-VNAV systems, procedure NA below -17°C or above 54°C. For inop ALS, increase RNP 0.30 all Cats visibility to RVR 6000.</p>						
D-ATIS	CINCINNATI APP CON	CINCINNATI TOWER		GN D CON	CLNC DEL	CPDLC
ARR 134.375 DEP 135.3	119.7 363.15 (090°-269°) 123.875 363.15 (270°-089°)	118.975 360.85 (RWY 18L/36R) 118.3 (RWYS 18C/36C, 09/27) 133.325 (RWY 18R/36L)		121.7	127.175	



SE-1, 21 APR 2022 to 19 MAY 2022

SE-1, 21 APR 2022 to 19 MAY 2022

AUTHORIZATION REQUIRED

HIRL all Rws
TDZ/CL all Rws except 27