

APP CRS	Rwy Idg	11000
006°	TDZE	850
	Apt Elev	896

RNAV (RNP) Z RWY 36C

CINCINNATI/NORTHERN KENTUCKY INTL (CVG)

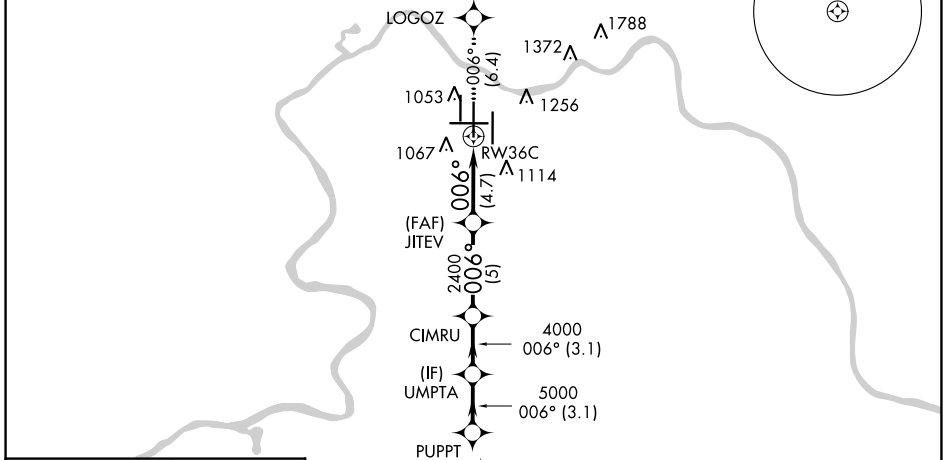
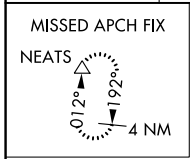
RNP AR APCH - GPS.

Simultaneous approach authorized. For uncompensated Baro-VNAV systems, procedure NA below -17°C or above 54°C. For inop ALS, increase RNP 0.30 visibility to 1% SM.

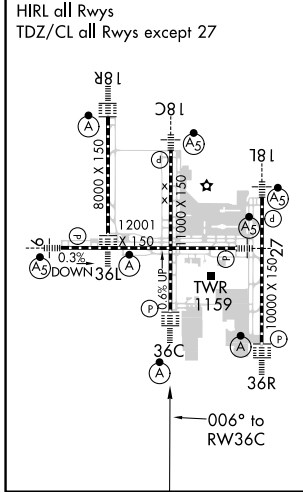


MISSED APPROACH: Climb to 3000 on track 006° to LOGOZ and track 007° to NEATS and hold.

D-ATIS	CINCINNATI APP CON	CINCINNATI TOWER	GND CON	CLNC DEL	CPDLC
ARR 134.375 DEP 135.3	119.7 363.15 (090°-269°) 123.875 363.15 (270°-089°)	118.975 360.85 (RWY 18L/36R) 118.3 (RWYS 18C/36C, 09/27) 133.325 (RWY 18R/36L)	121.7	127.175	



ELEV	896	D	TDZE	850
------	------------	----------	------	------------

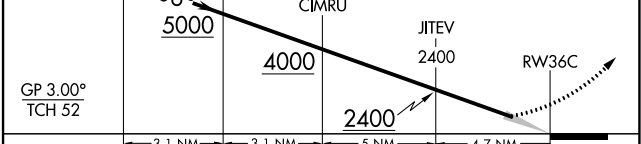
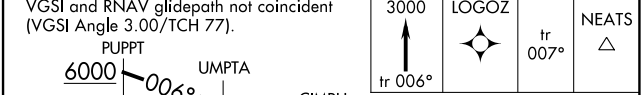


Procedure NA for arrivals at DARKS on V97 southbound.

Procedure NA for arrivals at FLM VOR/DME on V517 southeast bound and V57 northbound.

(IAF) DARKS

FALMOUTH FLM



GP 3.00° TCH 52	3.1 NM	3.1 NM	5 NM	4.7 NM
CATEGORY	A	B	C	D
RNP 0.30 DA	1318/50 468 (500-1)			

AUTHORIZATION REQUIRED

SE-1, 21 APR 2022 to 19 MAY 2022

SE-1, 21 APR 2022 to 19 MAY 2022