

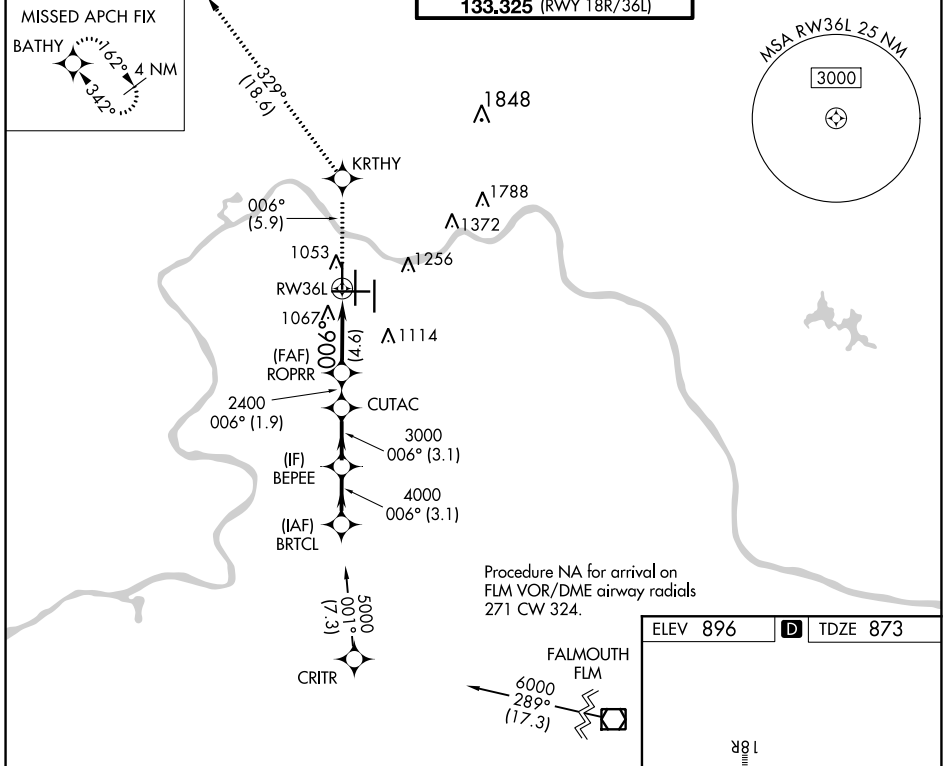
APP CRS	Rwy Idg	<b>8000</b>
<b>006°</b>	TDZE	<b>873</b>
	Apt Elev	<b>896</b>

# RNAV (RNP) Z RWY 36L

CINCINNATI/NORTHERN KENTUCKY INTL (CVG)

RNP AR APCH - GPS.	ALSF-2	MISSED APPROACH: Climb to 3000 on track 006° to KRTHY and track 329° to BATHY and hold.
Simultaneous approach authorized. For uncompensated Baro-VNAV systems, procedure NA below -17°C or above 54°C.		

D-ATIS	CINCINNATI APP CON	CINCINNATI TOWER	GND CON	CLNC DEL	CPDLC
ARR DEP	<b>119.7 363.15</b> (090°-269°)	<b>118.975 360.85</b> (RWY 18L/36R)	<b>121.7</b>	<b>127.175</b>	
<b>134.375 135.3</b>	<b>123.875 363.15</b> (270°-089°)	<b>118.3</b> (RWYS 18C/36C, 09/27)			
		<b>133.325</b> (RWY 18R/36L)			



SE-1, 21 APR 2022 to 19 MAY 2022

SE-1, 21 APR 2022 to 19 MAY 2022

BRTCL	3000	KRTHY	BATHY
5000	tr 006°		tr 329°
BEPEE	CUTAC	ROPRR	RW36L
4000	2400	2400	
GP 3.00°	3000	2400	
TCH 55	2400		
	3.1 NM	3.1 NM	1.9 NM 4.6 NM
CATEGORY	A	B	C D
RNP 0.30 DA	1264/35 391 (400-5%)		
<b>AUTHORIZATION REQUIRED</b>			

