

WAAS CH 40103 W18A	APP CRS 186°	Rwy Idg TDZE 889 Apt Elev 896	10000
--	------------------------	---	--------------

RNAV (GPS) Y RWY 18L

CINCINNATI/NORTHERN KENTUCKY INTL (CVG)

RADAR required for procedure entry. RNP APCH - GPS.

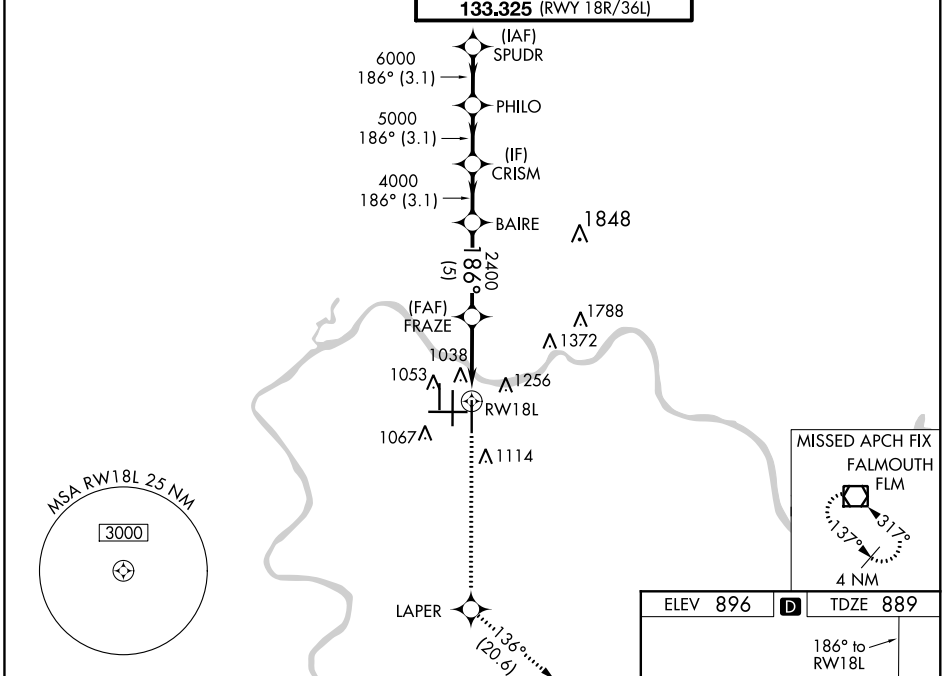
▼ For uncompensated Baro-VNAV systems, LNAV/VNAV NA below -17°C or above 54°C. Simultaneous approach authorized with Rwy 18C/R. LNAV procedure NA during simultaneous operations. Use of FD or AP required during simultaneous operations. For inop ALS, increase LNAV/VNAV all Cats and LNAV Cat C/D visibility to 1 $\frac{3}{8}$ SM.

MALSR

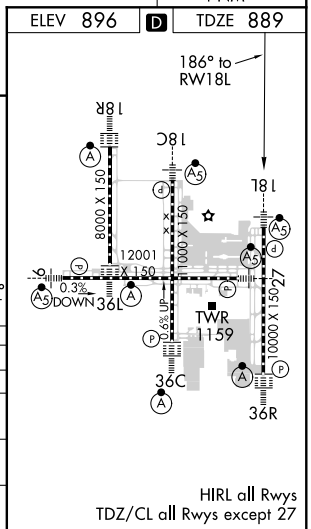


MISSED APPROACH: Climb to 3000 direct LAPER and on track 136° to FLM VOR/DME and hold.

D-ATIS ARR 134.375 DEP 135.3		CINCINNATI APP CON 119.7 363.15 (090°-269°) 123.875 363.15 (270°-089°)	CINCINNATI TOWER 118.975 360.85 (RWY 18L/36R) 118.3 (RWYS 18C/36C, 09/27) 133.325 (RWY 18R/36L)	GN D CON 121.7	CLNC DEL 127.175	CPDLC
---	--	--	---	--------------------------	----------------------------	-------



3000	LAPER	FLM	VGSI and RNAV glidepath not coincident (VGSI Angle 3.00/TCH 71).			
↑	✦ tr 136°	◻	PHILO SPUDR 7000			
RWY 18L			FRAZE 2400			BAIRE 4000
1.3 NM to RWY 18R			5000			6000
GP 3.00° TCH 55			186°			2400
1.3 NM			3.3 NM			5 NM
3.1 NM			3.1 NM			3.1 NM
CATEGORY	A	B	C	D		
LPV DA	1089/18		200 (200- $\frac{1}{2}$)			
LNAV/VNAV DA	1395/55		506 (500-1)			
LNAV MDA	1360/24 471 (500- $\frac{1}{2}$)		1360/50 471 (500-1)			
CIRCLING	1460-1 564 (600-1)		1560-1 $\frac{3}{4}$ 664 (700-1 $\frac{3}{4}$)		1560-2 664 (700-2)	



SE-1, 21 APR 2022 to 19 MAY 2022

SE-1, 21 APR 2022 to 19 MAY 2022

HIRL all Rwy's
TDZ/CL all Rwy's except 27