

WAAS CH 86809 W27A	APP CRS 276°	Rwy Idg 12001 TDZE 875 Apt Elev 896
--	------------------------	--

RNAV (GPS) Y RWY 27

CINCINNATI/NORTHERN KENTUCKY INTL (CVG)

RNP APCH-GPS.

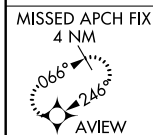
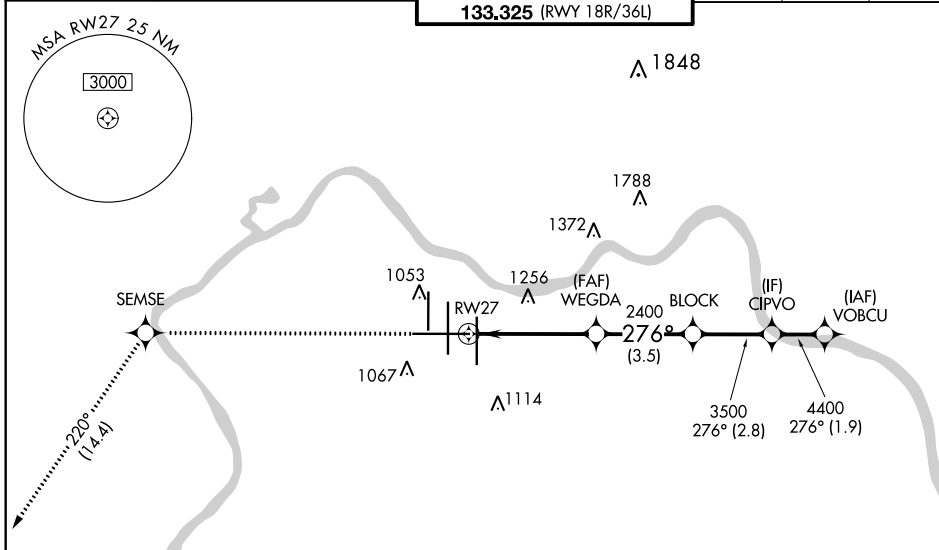
▼ For uncompensated Baro-VNAV systems, LNAV/VNAV NA below -16° C or above 54° C. For inop ALS, increase LNAV/VNAV all Cats visibility to 1 3/8 SM.
**RVR 1800 authorized with use of FD or AP or HUD to DA.

MALSR

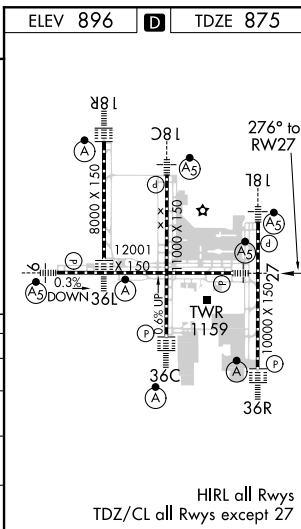


MISSED APPROACH: Climb to 3000 direct SEMSE then on track 220° to AVIEW and hold.

D-ATIS ARR 134.375 DEP 135.3	CINCINNATI APP CON 119.7 363.15 (090°-269°) 123.875 363.15 (270°-089°)	CINCINNATI TOWER 118.975 360.85 (RWY 18L/36R) 118.3 (RWYS 18C/36C, 09/27) 133.325 (RWY 18R/36L)	GND CON 121.7	CLNC DEL 127.175	CPDLC
---	--	---	-------------------------	----------------------------	-------



3000	SEMSE	tr 220°	AVIEW	VGSI and RNAV glidepath not coincident (VGSI Angle 3.00/TCH 67).			
				BLOCK	CIPVO	5000	VOBCU
				WEGDA		276°	
				1.5 NM to RW27	2400	3500	4400
				RW27	2400		GP 3.00° TCH 55
				1.5 NM	3 NM	3.5 NM	2.8 NM
				1.9 NM			
CATEGORY	A	B	C	D			
LPV DA **		1075/24	200 (200-1/2)				
LNAV/VNAV DA		1349/50	474 (500-1)				
LNAV MDA	1420/24	545 (600-1/2)	1420/60	545 (600-1/4)			
CIRCLING	1460-1	564 (600-1)	1560-1 3/4	1560-2			
			664 (700-1/4)	664 (700-2)			



SE-1, 21 APR 2022 to 19 MAY 2022

SE-1, 21 APR 2022 to 19 MAY 2022

HIRL all Rwys
TDZ/CL all Rwys except 27