

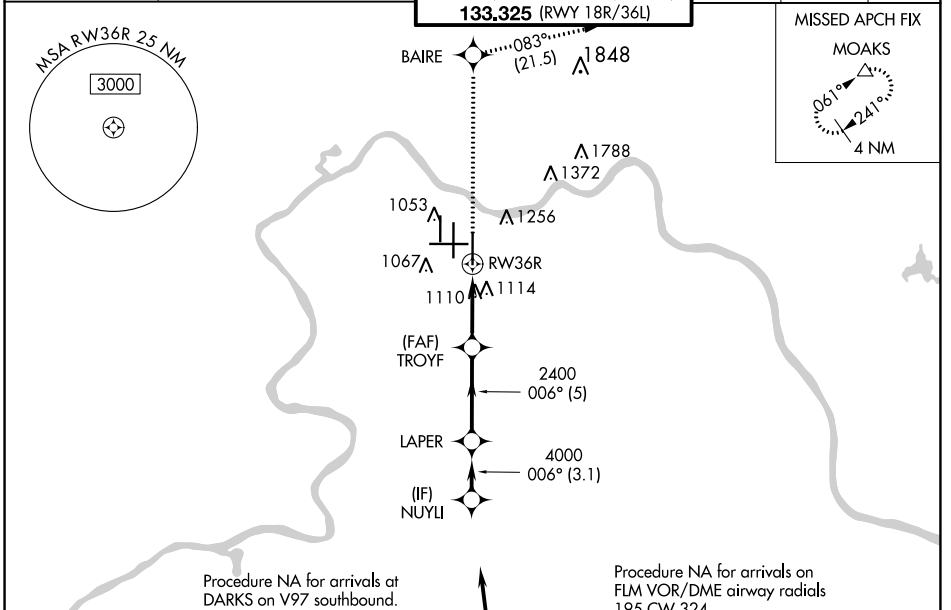
WAAS CH 42709	APP CRS 006°	Rwy Idg TDZE 896	10000
W36D		Apt Elev 896	

RNAV (GPS) Y RWY 36R

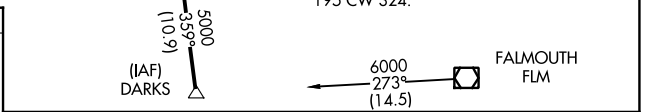
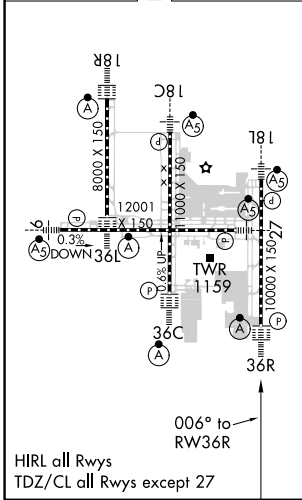
CINCINNATI/NORTHERN KENTUCKY INTL (CVG)

RNP APCH - GPS.		ALSF-2	MISSED APPROACH: Climb to 3000 direct BAIRE and on 083° track to MOAKS and hold.
▼ For uncompensated Baro-VNAV systems, LNAV/VNAV NA below -16°C or above 54°C. Simultaneous approach authorized with Rwy 36L/C. LNAV procedure NA during simultaneous operations. Use of FD or AP providing RNAV track guidance required during simultaneous operations.			

D-ATIS ARR 134.375 DEP 135.3	CINCINNATI APP CON 119.7 363.15 (090°-269°)	CINCINNATI TOWER 118.975 360.85 (RWY 18L/36R) 118.3 (RWYS 18C/36C, 09/27) 133.325 (RWY 18R/36L)	GND CON 121.7	CLNC DEL 127.175	CPDLC
---	---	---	-------------------------	----------------------------	-------



ELEV 896 **D** TDZE 896



3000	BAIRE	MOAKS	VGSi and RNAV glidepath not coincident (VGSi Angle 3.00/TCH 70). LAPER NUYLI	
↑	tr 083°	△	2400	5000
	1.2 NM to RWY36R		2400	GP 3.00° TCH 55
	1.2	3.3	5	3.1
CATEGORY	A	B	C	D
LPV DA	1096/18 200 (200-½)			
LNAV/VNAV DA	1340/45 444 (500-¾)			
LNAV MDA	1360/24	464 (500-½)	1360/50	464 (500-1)
CIRCLING	1460-1	564 (600-1)	1560-1¾ 664 (700-1¾)	1560-2 664 (700-2)

SE-1, 21 APR 2022 to 19 MAY 2022

SE-1, 21 APR 2022 to 19 MAY 2022