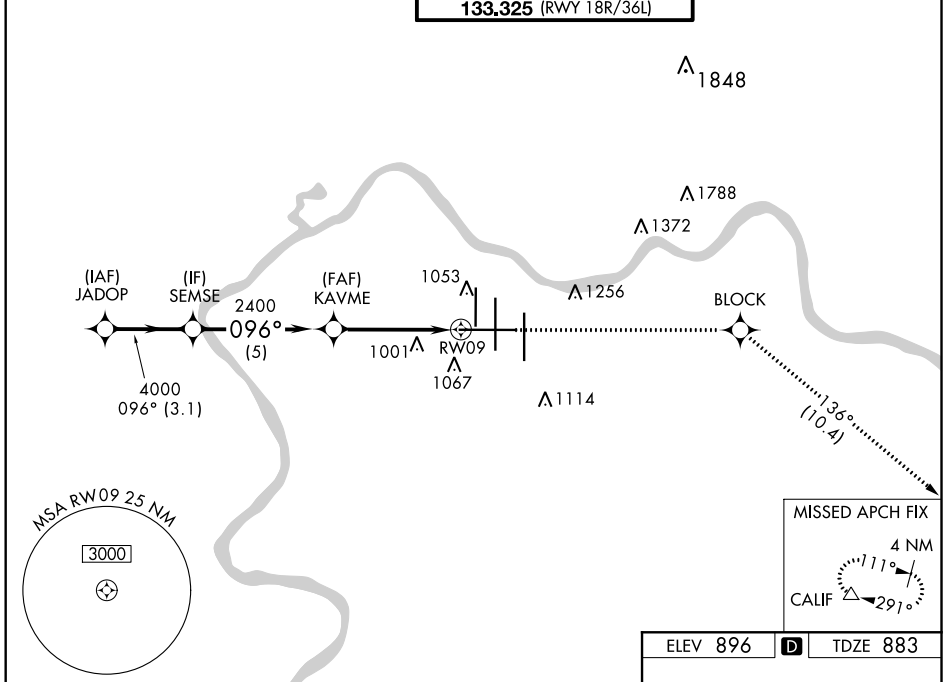


WAAS CH 65709 W09A	APP CRS 096°	Rwy Idg 12001 TDZE 883 Apt Elev 896
--	------------------------	--

RNAV (GPS) Y RWY 9

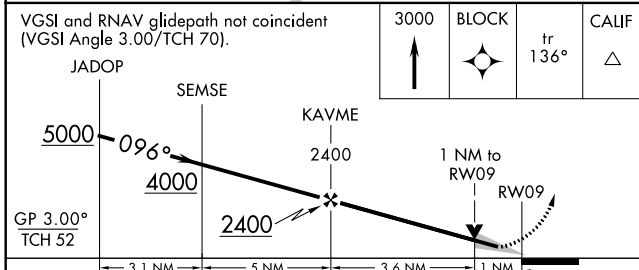
CINCINNATI/NORTHERN KENTUCKY INTL (CVG)

RNP APCH - GPS.		MALSR	MISSED APPROACH: Climb to 3000 direct BLOCK and on track 136° to CALIF and hold.		
▼ For uncompensated Baro-VNAV systems, LNAV/VNAV NA below -16° C or above 54° C. For inop ALS, increase LNAV/VNAV all Cts visibility to RVR 6000 and LNAV Cat C/D visibility to RVR 5500.					
D-ATIS ARR 134.375 DEP 135.3	CINCINNATI APP CON 119.7 363.15 (090°-269°) 123.875 363.15 (270°-089°)	CINCINNATI TOWER 118.975 360.85 (RWY 18L/36R) 118.3 (RWYS 18C/36C, 09/27) 133.325 (RWY 18R/36L)	GND CON 121.7	CLNC DEL 127.175	CPDLC

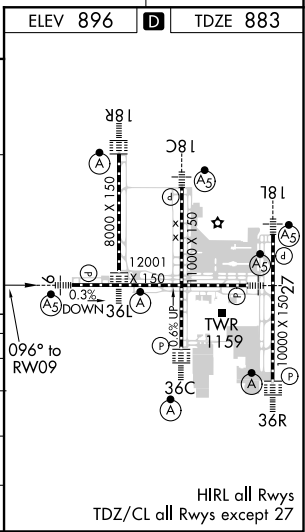


SE-1, 21 APR 2022 to 19 MAY 2022

SE-1, 21 APR 2022 to 19 MAY 2022



CATEGORY	A	B	C	D
LPV DA		1083/18	200 (200-½)	
LNAV/VNAV DA		1297/40	414 (500-¾)	
LNAV MDA	1260/24	377 (400-½)	1260/35	377 (400-⅝)
CIRCLING	1460-1	564 (600-1)	1560-1¾ 664 (700-1¾)	1560-2 664 (700-2)



HIRL all Rwy's
TDZ/CL all Rwy's except 27