

SARGO THREE ARRIVAL (RNAV)

CINCINNATI/NORTHERN KENTUCKY INTL (CVG)
COVINGTON, KENTUCKY

SE-1, 21 APR 2022 to 19 MAY 2022

CINCINNATI APP CON
119.7 363.15 (090°-269°)
123.875 363.15 (270°-089°)
D-ATIS ARR
134.375



CENTRALIA TRANSITION (ENL.SARGO3): POCKET CITY TRANSITION (PXV.SARGO3):

From over SARGO on track 065° to TYOTA, then on track 065° to FIDEK; then on track 004° to BAMGE, then on track 004° to AGEBE, then on heading 004°. Expect radar vectors to final approach course.

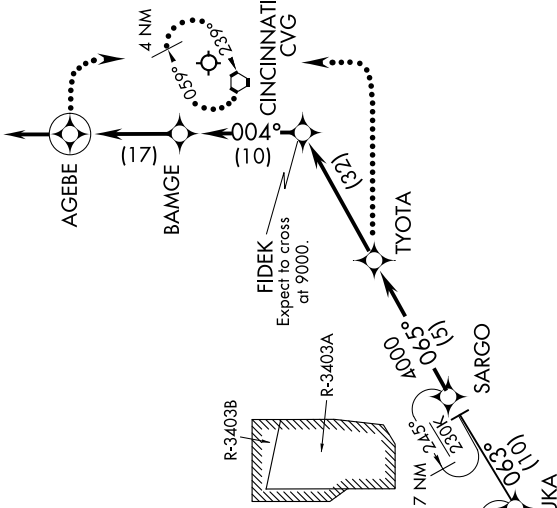
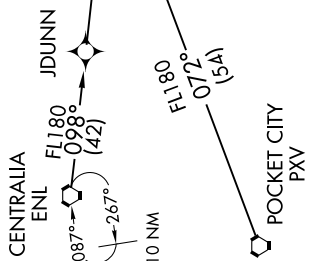
Landing South: Expect radar vectors to final approach course prior to AGEBE.

Landing East, West, North: Expect radar vectors to final approach course after FIDEK.

LOST COMMUNICATIONS:

At AGEBE fly heading 090°, maintain 4000; intercept and execute ILS RWY 18R approach. If unable, proceed direct to CVG VORTAC and hold, NE, RT, 239° inbound, maintain 4000.

At TYOTA fly heading 090°, maintain 4000; intercept and execute ILS RWY 36L approach. If unable, proceed direct to CVG VORTAC and hold, NE, RT, 239° inbound, maintain 4000.



NOTE: RADAR required.
NOTE: RNAV 1.
NOTE: DME/DME/IRU or GPS required.

NOTE: Chart not to scale.

SE-1, 21 APR 2022 to 19 MAY 2022

SARGO THREE ARRIVAL (RNAV)

(SARGO.SARGO3) 24JUL14

COVINGTON, KENTUCKY
CINCINNATI/NORTHERN KENTUCKY INTL (CVG)