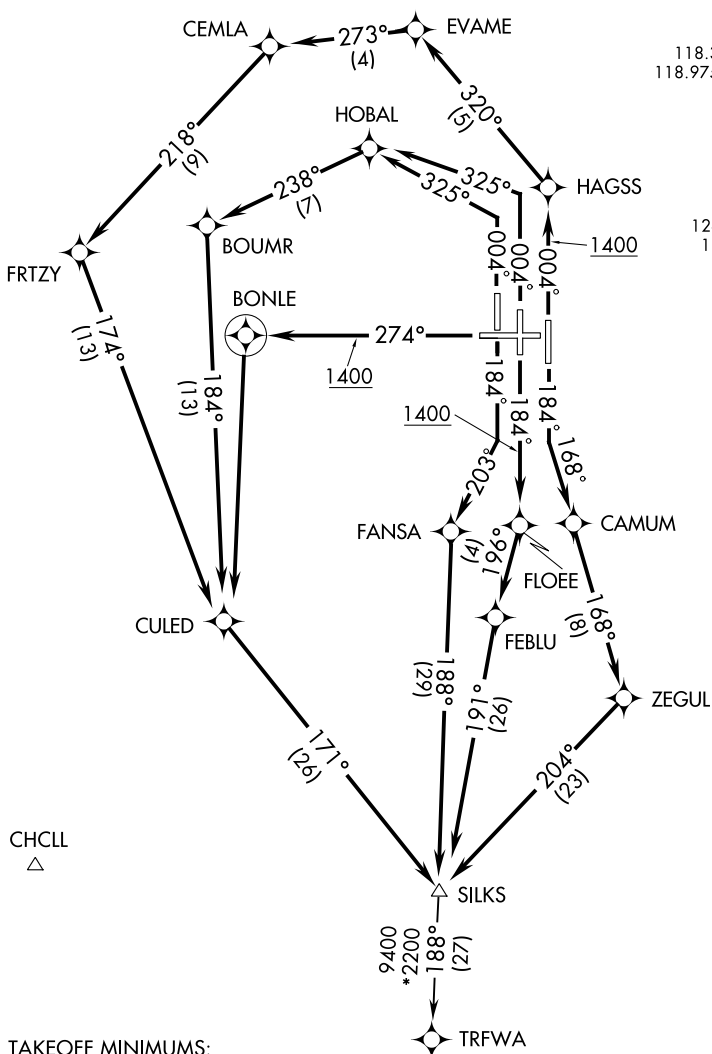


SILKS FOUR DEPARTURE (RNAV)

AL-655 (FAA)

COVINGTON, KENTUCKY



D-ATIS DEP 135.3
 CINCINNATI TOWER
 118.3 (RWYS 18C/36C, 9/27)
 118.975 360.85 (RWY 18L/36R)
 133.325 (RWY 18R/36L)
 GND CON
 121.7
 CLNC DEL
 127.175
 CPDLC
 CINCINNATI DEP CON
 126.65 254.25 (001°-180°)
 128.7 254.25 (181°-360°)

TOP ALTITUDE:
 (JETS/PROPS)
 6000 4000

SE-1, 21 APR 2022 to 19 MAY 2022

SE-1, 21 APR 2022 to 19 MAY 2022

TAKEOFF MINIMUMS:

Rwy 9: NA-ATC.
 Rwy 18L, 18C, 18R, 27, 36R, 36C, 36L: Standard
 with minimum climb of 500' per NM to 1400.

- NOTE: If unable to accept climb rates, advise ATC on initial contact.
- NOTE: DME/DME/IRU or GPS required.
- NOTE: Radar required.
- NOTE: RNAV 1.
- NOTE: Transponder code will be issued via PDC or Cincinnati CLNC DEL.
- NOTE: Accelerate to 250K, if unable, advise ATC.

(NARRATIVE ON FOLLOWING PAGE)

NOTE: Chart not to scale.

SILKS FOUR DEPARTURE (RNAV)