

TIGRR THREE ARRIVAL (RNAV)

SE-1, 21 APR 2022 to 19 MAY 2022

CINCINNATI APP CON
119.7 363.15 (090°-269°)
123.875 363.15 (270°-089°)
D-ATIS ARR
134.375

NOTE: RADAR required.

NOTE: RNAV 1.

NOTE: DME/DME/IRU or GPS required.

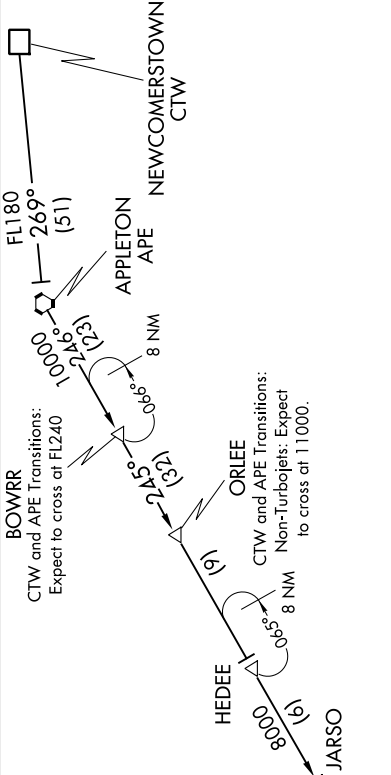
NOTE: APE transition only for use by overseas flights or aircraft from the Cleveland/Akron-Canton/Pittsburgh terminal areas with filed altitudes at or below FL220.

TIGRR

CTW and APE Transitions:

Turbobojts: Expect to cross at 11000.

Non-Turbobojts: Expect to cross at 9000.



APPLETON TRANSITION (APE.TIGRR3):

NEWCOMERSTOWN TRANSITION (CTW.TIGRR3):

From over TIGRR on track 231° to CHARZ, thence as depicted to HAVLO.

Landing South, East, West: Expect RADAR vectors to final approach course prior to BACAS.

Landing North: Expect RADAR vectors to final approach course prior to HAVLO.

LOST COMMUNICATIONS:

At HAVLO fly heading 270°, maintain 6000, intercept and execute ILS RWY 36R approach. If unable, proceed direct to CVG VORTAC and hold, NE, RT, 239° inbound, maintain 6000.

At CHARZ fly heading 270°, maintain 6000, intercept and execute ILS RWY 18L approach. If unable, proceed direct to CVG VORTAC and hold, NE, RT, 239° inbound, maintain 6000.



NOTE: Chart not to scale.

SE-1, 21 APR 2022 to 19 MAY 2022

TIGRR THREE ARRIVAL (RNAV)