

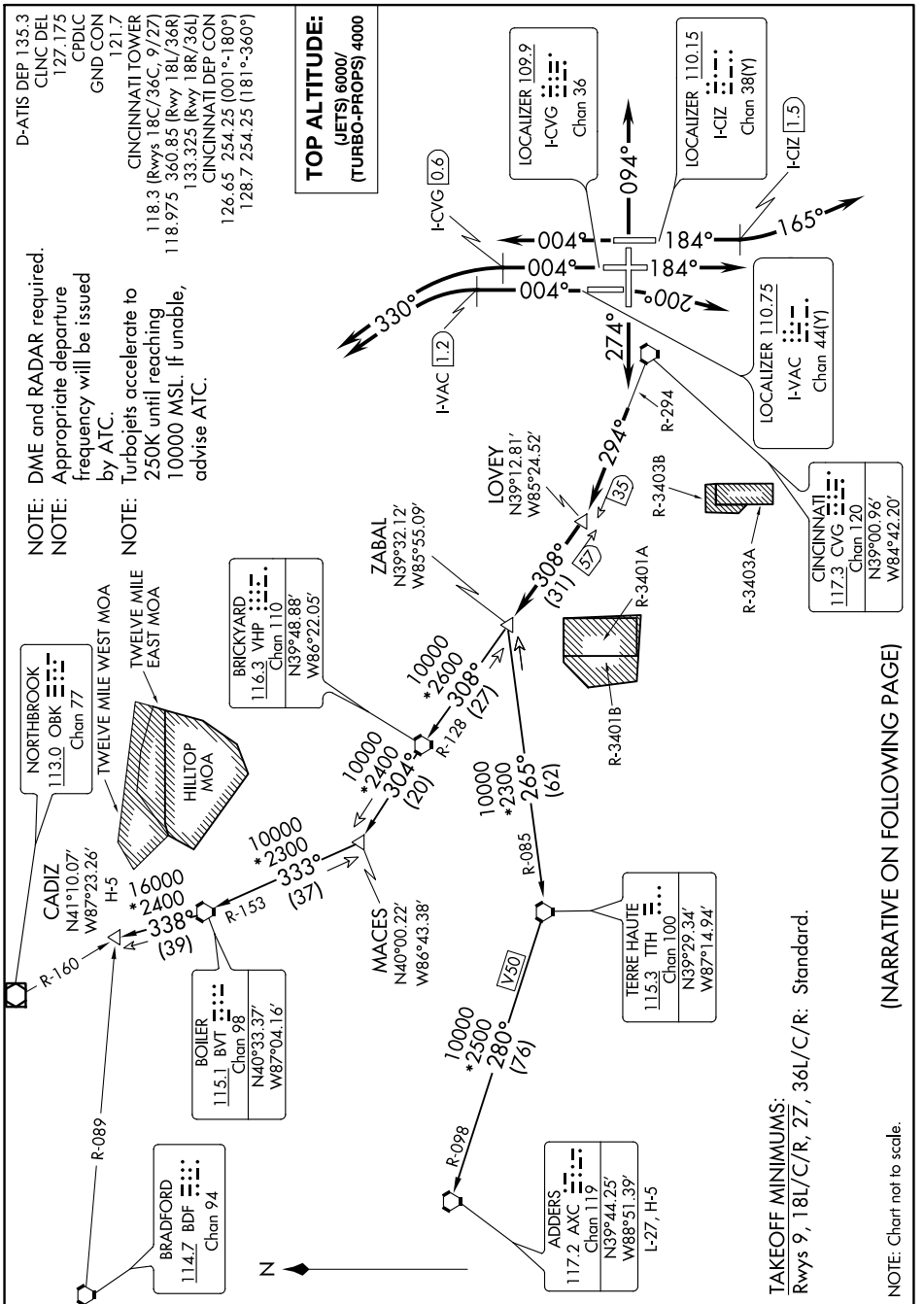
WHITEWATER ONE DEPARTURE

AL-655 (FAA)

COVINGTON, KENTUCKY

SE-1, 21 APR 2022 to 19 MAY 2022

SE-1, 21 APR 2022 to 19 MAY 2022



NOTE: DME and RADAR required.
NOTE: Appropriate departure frequency will be issued by ATC.
NOTE: Turbojets accelerate to 250K until reaching 10000 MSL. If unable, advise ATC.

TOP ALTITUDE:
 (JETS) 6000/
 (TURBO-PROPS) 4000

CINCINNATI TOWER
 121.7
 CINCINNATI DEP CON
 126.65 254.25 (001°-180°)
 128.7 254.25 (181°-360°)
 118.3 (Rwys 18C/36C, 9/27)
 118.975 360.85 (Rwy 18L/36R)
 133.325 (Rwy 18R/36L)
 CINCINNATI DEP CON

BRADFORD
 114.7 BDF
 Chan 94

BOILER
 115.1 BVT
 Chan 98
 N40°33.37'
 W87°04.16'

NORTHBROOK
 113.0 ORK
 Chan 77

BRICKYARD
 116.3 VHP
 Chan 110
 N39°48.88'
 W86°22.05'

ZABAL
 N39°32.12'
 W85°55.09'

LOVEY
 N39°12.81'
 W85°24.52'

TERRE HAUTE
 115.3 TTH
 Chan 100
 N39°29.34'
 W87°14.94'

ADDERS
 117.2 AXC
 Chan 119
 N39°44.25'
 W88°51.39'

CINCINNATI
 117.3 CVG
 Chan 120
 N39°00.96'
 W84°42.20'

TAKEOFF MINIMUMS:
 Rwys 9, 18L/C/R, 27, 36L/C/R: Standard.

(NARRATIVE ON FOLLOWING PAGE)