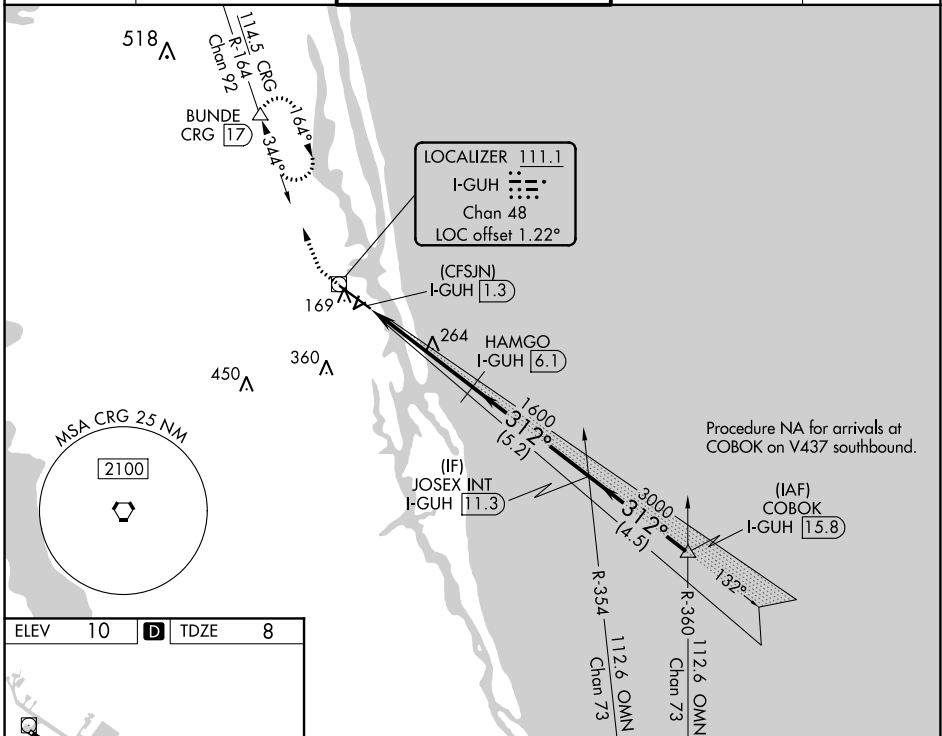


LOC/DME I-GUH 111.1 Chan 48	APP CRS 312°	Rwy Idg TDZE 8 Apt Elev 10	5925
---	------------------------	--	-------------

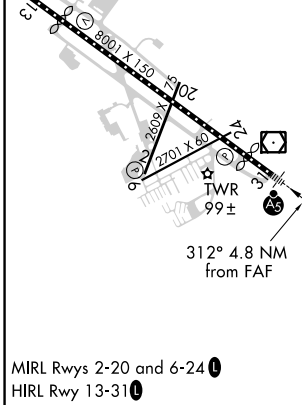
ILS or LOC RWY 31
NORTHEAST FLORIDA RGNL (SGJ)

DME required.	MALSR	MISSED APPROACH: Climb to 3000 on heading 312° and on CRG VORTAC R-164 to BUNDE/CRG 17 DME and hold, continue climb-in-hold to 3000.
<p>Circling Rwy 2, 6 NA at night. For inop ALS, increase S-LOC 31 Cat C/D visibility to 1½ SM.</p>		

ATIS 119.625	JACKSONVILLE APP CON 120.75	ST AUGUSTINE TOWER ★ 127.625 (CTAF) 269.475	GND CON 121.175 251.125	UNICOM 122.95
------------------------	---------------------------------------	---	-----------------------------------	-------------------------



ELEV 10	D	TDZE 8
---------	----------	--------



3000	CRG R-164	BUNDE	VGSI and ILS glidepath not coincident (VGSI Angle 3.00/TCH 54).	
hdg 312°			JOSEX INT I-GUH [11.3]	COBOK I-GUH [15.8]
*LOC only.	*I-GUH [2.7]	HAMGO I-GUH [6.1]		
(CFSJN) I-GUH [1.3]	1600	1600	312°	3000
				GS 3.00° TCH 57
	1.4 NM	3.4 NM	5.2 NM	4.5 NM
CATEGORY	A	B	C	D
S-ILS 31	258-½		250 (300-½)	
S-LOC 31	520-½ 512 (600-½)		520-1 512 (600-1)	
C CIRCLING	520-1	580-1	680-1¾	740-2½
	510 (600-1)	570 (600-1)	670 (700-1¾)	730 (800-2½)

SE-3, 21 APR 2022 to 19 MAY 2022

SE-3, 21 APR 2022 to 19 MAY 2022