

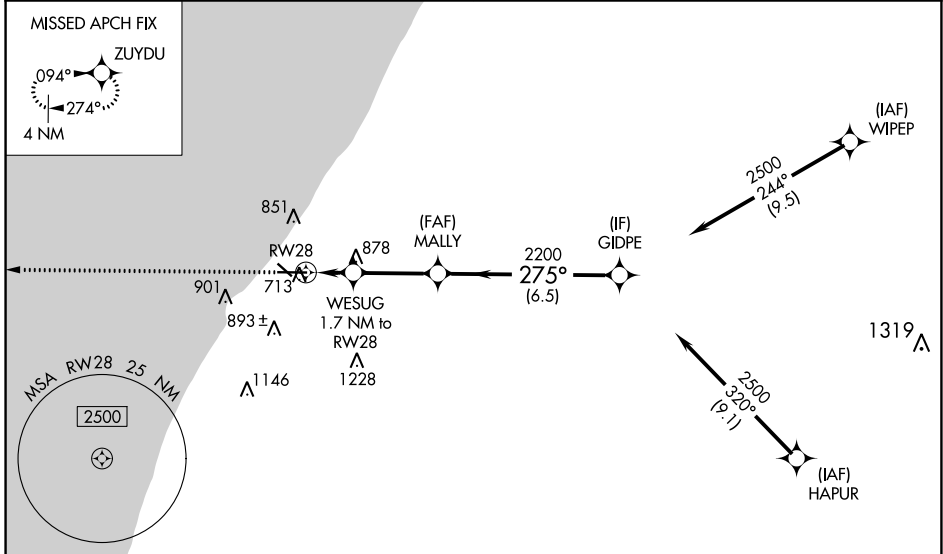
WAAS CH 45822 W28A	APP CRS 275°	Rwy Idg TDZE Apt Elev	6006 649 649
--	------------------------	-----------------------------	---

RNAV (GPS) RWY 28

SOUTHWEST MICHIGAN RGNL (BEH)

RNP APCH. 		MALSR 	MISSED APPROACH: Climb to 2500 direct ZUYDU and hold.
For uncompensated Baro-VNAV systems, LNAV/VNAV NA below -19°C (-2°F) or above 39°C (102°F). Circling Rwy 14, 32 NA at night.			

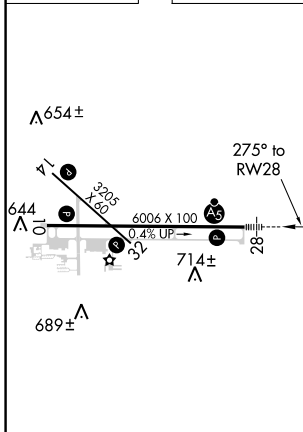
ASOS 121.55	SOUTH BEND APP CON* 118.55 257.8	SOUTH BEND CLNC DEL 119.7	UNICOM 123.0 (CTAF) 0
-----------------------	--	-------------------------------------	---------------------------------



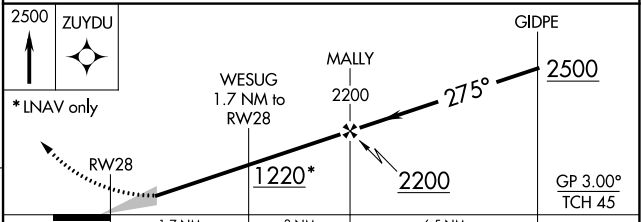
EC-1, 21 APR 2022 to 19 MAY 2022

EC-1, 21 APR 2022 to 19 MAY 2022

ELEV 649	TDZE 649
-----------------	-----------------



REIL Rwy 10, 14 and 32 0
 MIRL Rwy 14-32 0
 HIRL Rwy 10-28 0



CATEGORY	A	B	C	D
LPV DA		849-1/2	200 (200-1/2)	
LNAV/VNAV DA		941-1/2	292 (300-1/2)	
LNAV MDA	1140-1/2	491 (500-1/2)	1140-1	491 (500-1)
CIRCLING	1140-1 491 (500-1)	1160-1 511 (600-1)	1300-1 3/4 651 (700-1 3/4)	1340-2 691 (700-2)