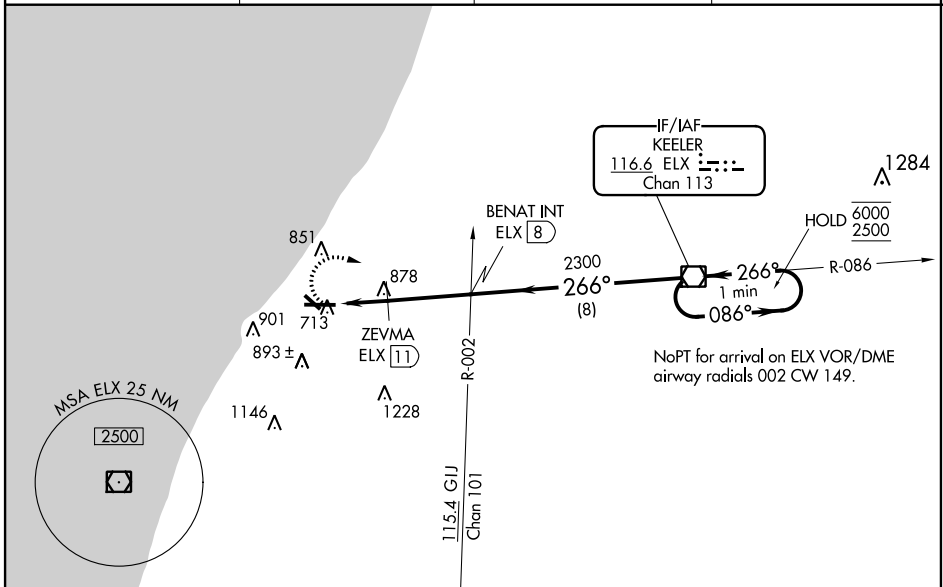


VOR/DME ELX <b>116.6</b>	APP CRS <b>266°</b>	Rwy Idg TDZE Apt Elev	<b>6006</b> <b>649</b> <b>649</b>
Chan <b>113</b>			

# VOR RWY 28

SOUTHWEST MICHIGAN RGNL (BEH)

DME required.		MALSR 	MISSED APPROACH: Climbing right turn to 2500 direct ELX VOR/DME and hold.
⚠ Circling Rwy 14, 32 NA at night. For inop ALS, increase S-28 Cats A and B visibility to 1 SM. ZEVMA fix minimums: for inop ALS, increase S-28 Cats A and B visibility to 1 SM and Cats C and D visibility to 1 3/8 SM.			
ASOS <b>121.55</b>	SOUTH BEND APP CON * <b>118.55 257.8</b>	SOUTH BEND CLNC DEL <b>119.7</b>	UNICOM <b>123.0 (CTAF)</b>



ELEV 649	TDZE 649	2500	ELX	
		ELX VOR/DME One Minute Holding Pattern		
CATEGORY	A	B	C	D
S-28	1300-1	651 (700-1)	1300-1 3/8	651 (700-1 3/8)
<b>C</b> CIRCLING	1300-1	651 (700-1)	1300-1 3/4	1340-2 1/4
ZEVMA FIX MINIMUMS				
S-28	1140-3/4	491 (500-3/4)	1140-1	491 (500-1)
<b>C</b> CIRCLING	1140-1	491 (500-1)	1300-1 3/4	1340-2 1/4
	491 (500-1)	511 (600-1)	651 (700-1 3/4)	691 (700-2 1/4)

EC-1, 21 APR 2022 to 19 MAY 2022

EC-1, 21 APR 2022 to 19 MAY 2022