

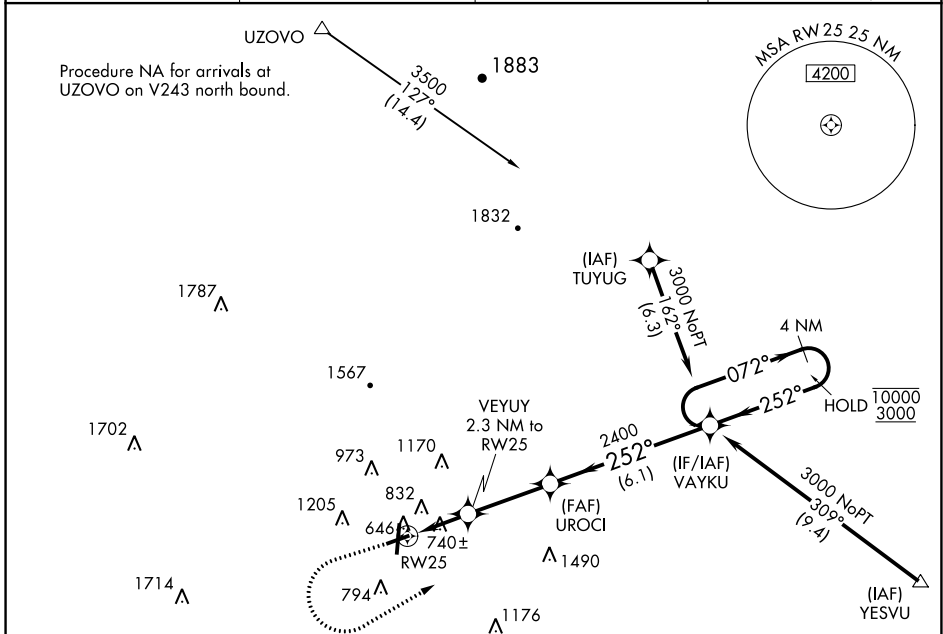
WAAS CH <b>56542</b> <b>W25A</b>	APP CRS <b>252°</b>	Rwy Idg TDZE Apt Elev	<b>4495</b> <b>638</b> <b>644</b>
--	------------------------	-----------------------------	---

# RNAV (GPS) RWY 25

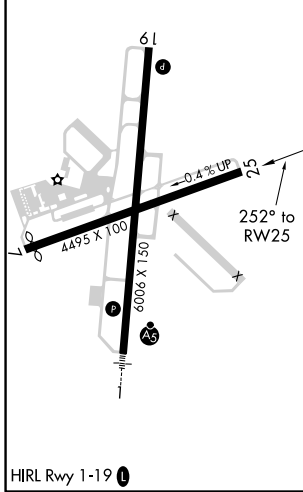
RICHARD B RUSSELL RGNL - J H TOWERS FLD (RMG)

RNP APCH.			MISSED APPROACH: Climb to 1100 then climbing left turn to 3000 direct VAYKU and hold.
▼ Rwy 25 helicopter visibility reduction below 3/4 SM NA. ▲ Straight in minimums NA at night. Circling NA northwest of Rws 7 and 19.			

ASOS <b>119.925</b>	ATLANTA CENTER <b>124.5 270.325</b>	GCO <b>121.725</b>	UNICOM <b>123.0 (CTAF) 1</b>
------------------------	--	-----------------------	---------------------------------



ELEV 644	<b>D</b>	TDZE 638
----------	----------	----------



1100	3000	VAYKU	4 NM Holding Pattern	
VAYKU 2.3 NM to RWY 25 UROCI 2.3 NM to RWY 25 YESVU 3000 NoPT (19.4)		072° → 10000 ← 252° 3000		
1 NM to RWY 25 TCH 45 1400 2400				
1 NM   1.3 NM   3.1 NM   6.1 NM				
CATEGORY	A	B	C	D
LP MDA	1000-1 362 (400-1)			
LNAV MDA	1100-1	462 (500-1)	1100-1 <sup>3/8</sup>	462 (500-1 <sup>3/8</sup> )
<b>C</b> CIRCLING	1140-1 496 (500-1)	1200-1 556 (600-1)	1480-2 <sup>1/2</sup> 836 (900-2 <sup>1/2</sup> )	1860-3 1216 (1300-3)

SE-4, 21 APR 2022 to 19 MAY 2022

SE-4, 21 APR 2022 to 19 MAY 2022