

APP CRS	Rwy Idg	4380
057°	TDZE	644
	Apt Elev	644

RNAV (GPS) RWY 7

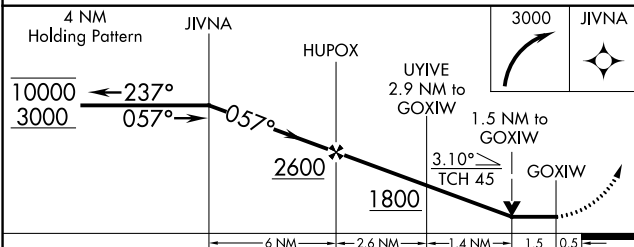
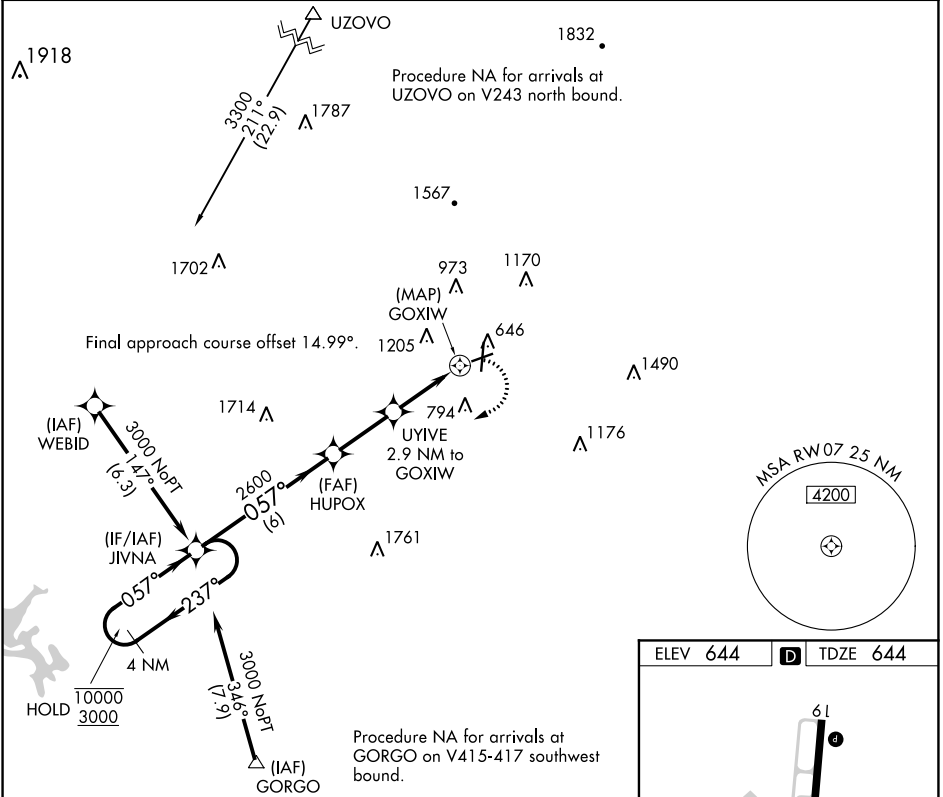
RICHARD B RUSSELL RGNL - J H TOWERS FLD (RMG)

RNP APCH.

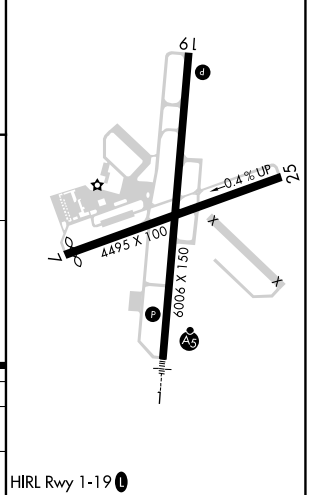
▼
▲
Rwy 7 helicopter visibility reduction below $\frac{3}{4}$ SM NA.
Straight-in minimums NA at night.
Circling NA northwest of Rwys 7 and 19.

MISSED APPROACH: Climbing right turn to 3000 direct JIVNA and hold.

ASOS 119.925	ATLANTA CENTER 124.5 270.325	GCO 121.725	UNICOM 123.0 (CTAF) 0
------------------------	--	-----------------------	---------------------------------



ELEV 644	D	TDZE 644
----------	----------	----------



CATEGORY	A	B	C	D
LNVA MDA	1340-1	696 (700-1)	1340-2	696 (700-2)
C CIRCLING	1340-1	696 (700-1)	1480-2½ 836 (900-2½)	1860-3 1216 (1300-3)

RNAV (GPS) RWY 7

SE-4, 21 APR 2022 to 19 MAY 2022

SE-4, 21 APR 2022 to 19 MAY 2022