

VORTAC ELW 108.6 Chan 23	APP CRS 039°	Rwy Idg 6002 TDZE 758 Apt Elev 782
---------------------------------------	------------------------	---

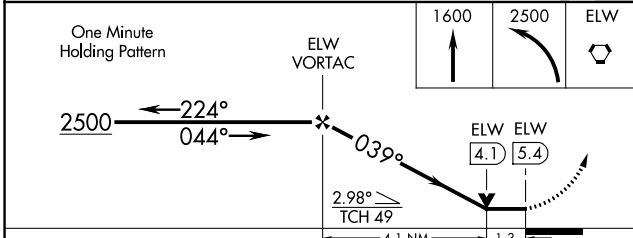
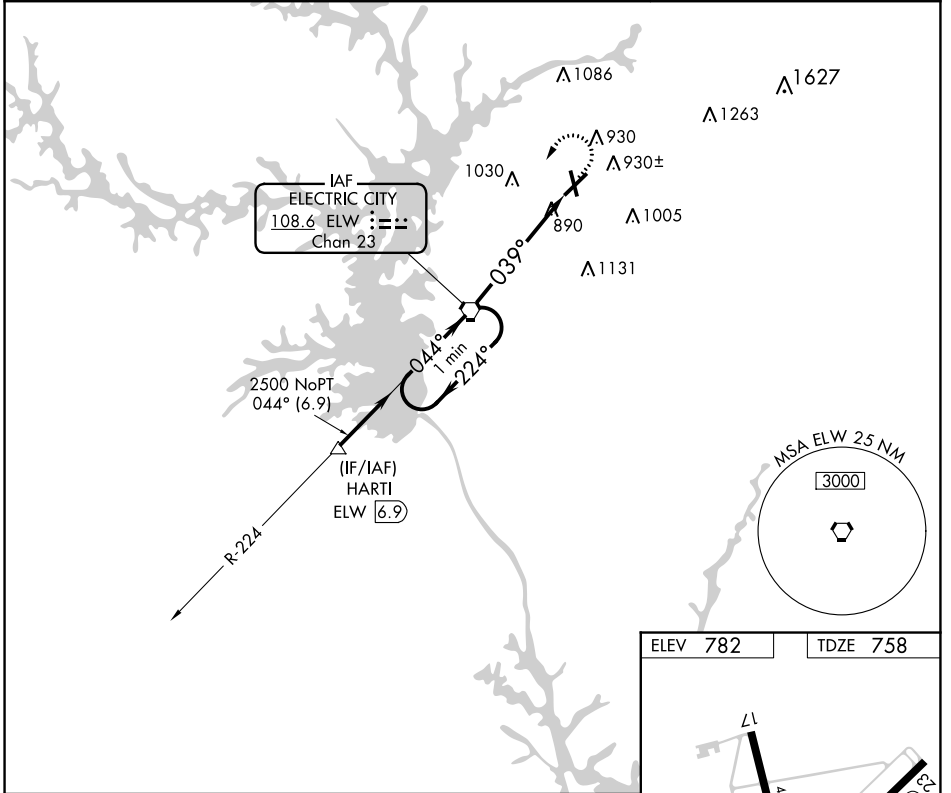
VOR RWY 5

ANDERSON RGNL (A.ND)

⚠ If local altimeter setting not received, use Clemson altimeter setting and increase all MDAs 60 feet. VDP NA when using Clemson altimeter setting.
 ⚠ Circling Rwy 17, 35 NA at night. 17, 35 helicopter visibility reduction below 1 SM NA.

MALSR MISSED APPROACH: Climb to 1600 then climbing left turn to 2500 direct ELW VORTAC and hold.

ASOS 120.675	GREER APP CON ★ 118.8 270.275	CTAF 123.6 0
------------------------	---	------------------------



ELEV 782	TDZE 758
----------	----------

808 ☆

039° 5.4 NM from FAF

HIRL Rwy 5-23

FAF to MAP 5.4 NM

Knots	60	90	120	150	180
Min:Seq	5:24	3:36	2:42	2:10	1:48

SE-2, 21 APR 2022 to 19 MAY 2022

SE-2, 21 APR 2022 to 19 MAY 2022