


LOC/DME I-LFT 109.5 Chan 32	APP CRS 216°	Rwy Idg 7659 TDZE 38 Apt Elev 42
---	------------------------	---


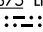
ILS or LOC RWY 22L

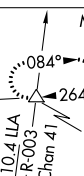
LAFAYETTE RGNL/PAUL FOURNET FLD (L.F.T)

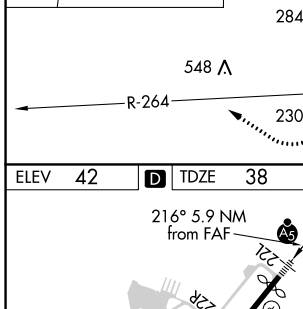
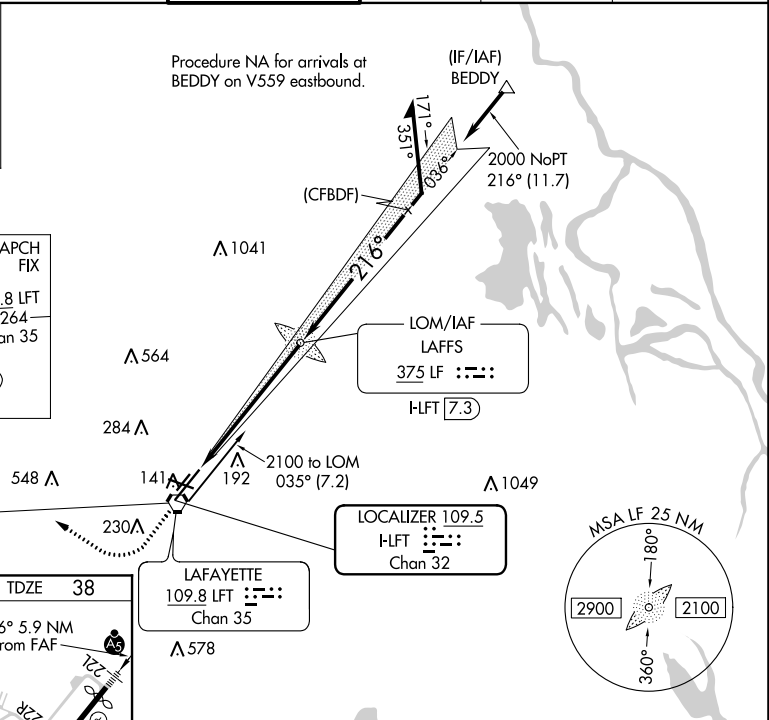
VDP NA with Acadiana Rgnl altimeter setting. When local altimeter setting not received, use Acadiana Rgnl altimeter setting and increase DA to 267 feet; increase all MDA 40 feet and S-LOC 22L visibility Cat C/D to RVR 5000 and Circling visibility Cat C/D 1/4 SM. For inop MALSR when using Acadiana Rgnl altimeter setting, increase S-LOC 22L Cat C and D visibility to 1 1/2 mile.
****RVR 1800** authorized with use of FD or AP or HUD to DA (NA when using Acadiana Rgnl altimeter setting).

MALS

MISSED APPROACH:
 Climb to 800 then climbing right turn to 2100 on LFT VORTAC R-264 to MICRO INT/ LFT 16 DME and hold.

ATIS 134.05	LAFAYETTE APP CON * 121.1 363.0	LAFAYETTE TOWER * 118.5 (CTAF) 0 257.8	GND CON 121.8	CLNC DEL 125.55	UNICOM 122.95
-----------------------	---	--	-------------------------	---------------------------	-------------------------

ALTERNATE MISSED APCH FIX

 LAFFS
 375 LF


1242

 MISSED APCH FIX
 109.8 LFT
 R-264
 Chan 35
 MICRO
 LFT 16
 110.4 ILA
 R-003
 Chan 41



REIL Rwy 4L, 4R, 11, 22R and 29
 MIRL Rwy 11-29 and 4L-22R
 HIRL Rwy 4R-22L

FAF to MAP 5.9 NM

Knots	60	90	120	150	180
Min:Sec	5:54	3:56	2:57	2:22	1:58

CATEGORY	A	B	C	D
S-ILS 22L**	238/24		200 (200-1/2)	
S-LOC 22L	480/24	442 (500-1/2)	480/45	442 (500-3/4)
C CIRCLING	540-1 498 (500-1)	580-1 538 (600-1)	700-1 3/4 658 (700-1 3/4)	700-2 658 (700-2)