

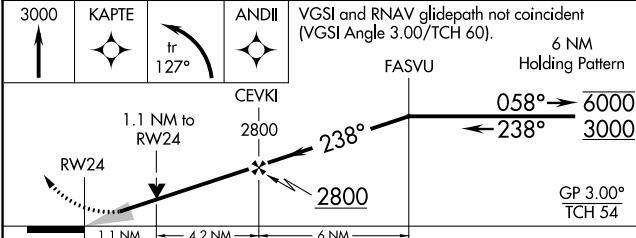
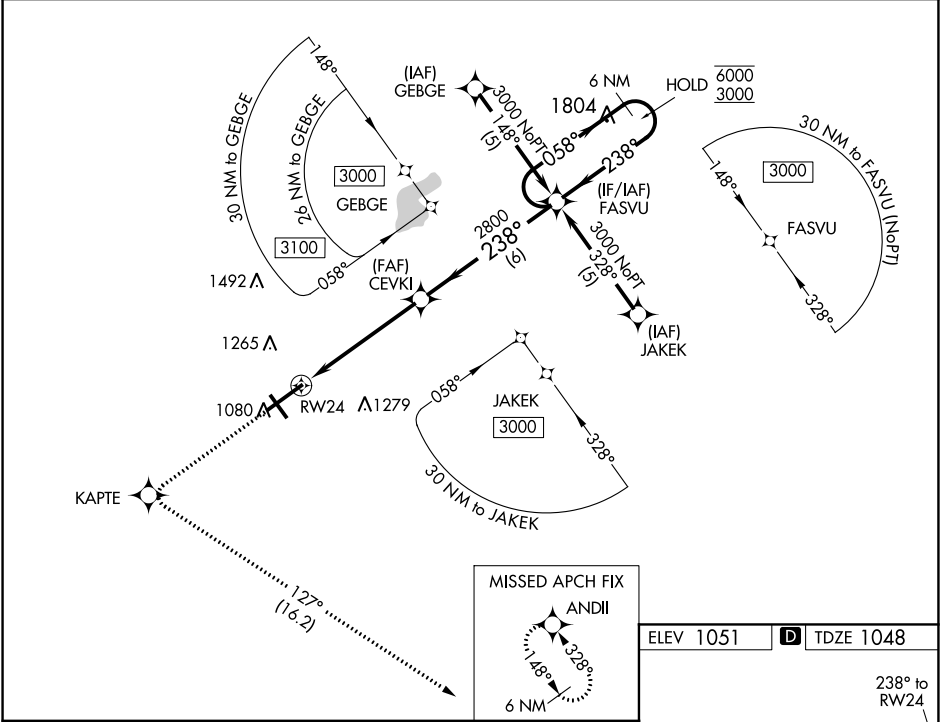
WAAS CH <b>97615</b> <b>W24A</b>	APP CRS <b>238°</b>	Rwy Idg <b>9009</b> TDZE <b>1048</b> Apt Elev <b>1051</b>
--	------------------------	---

# RNAV (GPS) RWY 24

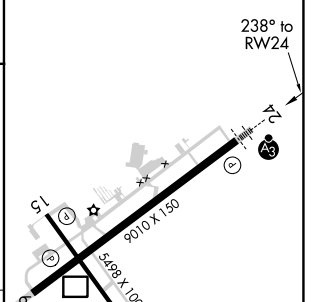
SPRINGFIELD/BECKLEY MUNI (SGH)

RNP APCH - GPS.	SSALR	MISSED APPROACH: Climb to 3000 direct KAPTE and left turn on track 127° to ANDII and hold.
<p>▼ For uncompensated Baro-VNAV systems, LNAV/VNAV NA below -17°C or above 54°C. For inop ALS, increase LNAV/VNAV all Cats visibility to 1 SM, increase LNAV Cats C and D visibility to 1½ SM.</p>		

AWOS-3PT <b>134.975</b>	COLUMBUS APP CON <b>118.85 269.275</b>	UNICOM <b>122.95 (CTAF) 1</b>
----------------------------	---	----------------------------------



ELEV 1051	<b>D</b> TDZE 1048
-----------	--------------------



CATEGORY	A	B	C	D
LPV DA		1248-½	200 (200-½)	
LNAV/VNAV DA		1398-⅝	350 (400-⅝)	
LNAV MDA	1560-½	512 (600-½)	1560-¾	512 (600-¾)
<b>C</b> CIRCLING	1560-1 509 (600-1)	1580-1 529 (600-1)	1580-1½ 529 (600-1½)	1620-2 569 (600-2)

HIRL Rwy 6-24 1  
MIRL Rwy 15-33 1  
REIL Rws 6, 15 and 33 1

EC-2, 21 APR 2022 to 19 MAY 2022

EC-2, 21 APR 2022 to 19 MAY 2022