

LOC/DME I-BQG <b>110.7</b> Chan <b>44</b>	APP CRS <b>144°</b>	Rwy ldg TDZE <b>22</b> Apt Elev <b>22</b>	<b>6997</b>
---	------------------------	---	-------------

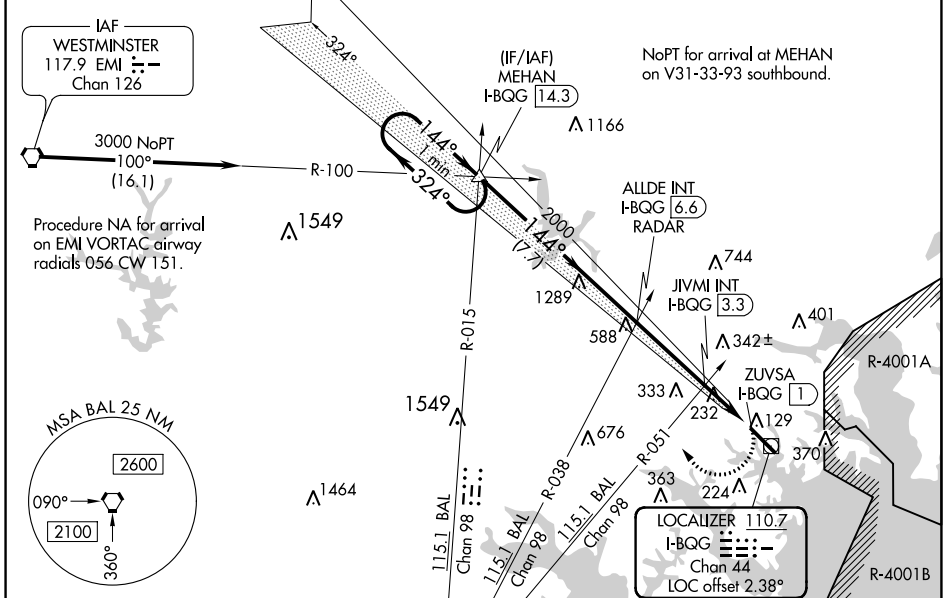
# LOC RWY 15

MARTIN STATE (MTN)

When local altimeter setting not received, use Baltimore/Washington Intl Thurgood Marshall altimeter setting; increase all MDA 60 feet and increase S-15 Cat A and Circling Cats C and D visibility 1/4 SM and increase JIVMI fix minimums S-15 Cats C and D visibility 1/2 SM and Circling Cat C and D visibility 1/4 SM. Rwy 15 helicopter visibility reduction below 3/4 SM NA. Circling Cat D NA northeast of Rwy 15-33.

MISSED APPROACH: Climbing right turn to 3000 on heading 312° and BAL VORTAC R-015 to MEHAN INT/I-BQG 14.3 DME and hold.

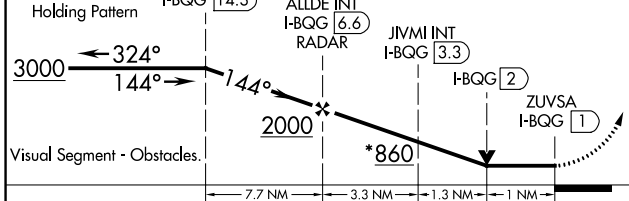
ATIS <b>124.925</b>	POTOMAC APP CON <b>119.0 282.275</b>	MARTIN TOWER ★ <b>121.3(CTAF) 0 254.425</b>	GND CON <b>121.8 253.4</b>	UNICOM <b>122.95</b>
------------------------	---	--	-------------------------------	-------------------------



NE-3, 21 APR 2022 to 19 MAY 2022

NE-3, 21 APR 2022 to 19 MAY 2022

*920 when using Baltimore/Washington Intl Thurgood Marshall altimeter setting.	3000 hdg 312°	BAL R-015	MEHAN	ELEV 22	TDZE 22
--	------------------	-----------	-------	---------	---------



144° 5.6 NM from FAF

HIRL Rwy 15-33  
REIL Rws 15 and 33

Rwy 33 ldg 8100' (Military Operations Only)	Rwy 15 take-off 8100' (Military Operations Only)
FAF to MAP 5.6 NM	
Knots	60 90 120 150 180
Min:Sec	5:36 3:44 2:48 2:14 1:52

CATEGORY	A		B		C		D	
S-15	860-1	838 (900-1)	860-1 1/4	838 (900-1 1/4)	860-2 1/2	838 (900-2 1/2)	860-2 3/4	838 (900-2 3/4)
CIRCLING	860-1 1/4	838 (900-1 1/4)	860-2 1/2	838 (900-2 1/2)	860-2 3/4	838 (900-2 3/4)	860-2 3/4	838 (900-2 3/4)
JIVMI FIX MINIMUMS (DUAL VOR RECEIVERS OR DME REQUIRED)								
S-15	500-1	478 (500-1)	500-1 3/8	478 (500-1 3/8)	500-1 3/8	478 (500-1 3/8)	500-1 3/8	478 (500-1 3/8)
CIRCLING	560-1	538 (600-1)	680-1 1/4	658 (700-1 1/4)	740-2 1/4	718 (800-2 1/4)	740-2 1/4	718 (800-2 1/4)