

LOC/DME I-MTN 110.7 Chan 44	APP CRS 326°	Rwy Idg TDZE 14 Apt Elev 22	6997
---	------------------------	---	-------------

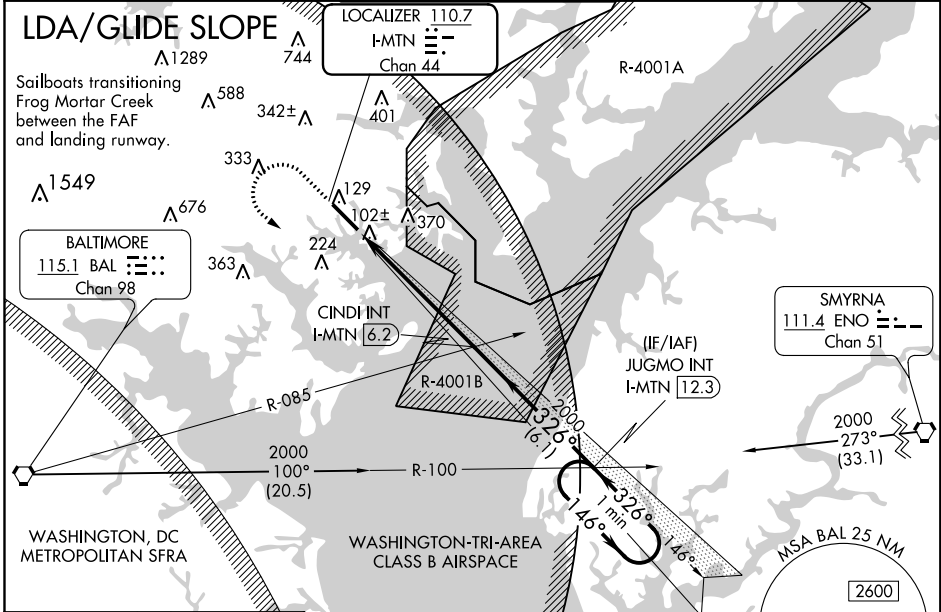
LDA RWY 33

MARTIN STATE (MTN)

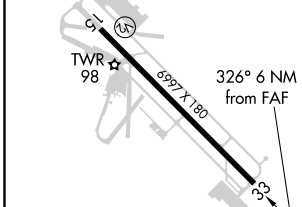
▼ RADAR Required. Helicopter visibility reduction below 1 SM NA. When local altimeter setting not received, use Baltimore/Washington Intl Thurgood Marshall altimeter setting; increase all MDA 60 feet and increase S-LDA 33 Cat C and Circling Cat C/D visibility ¼ SM. Circling Cat D NA northeast of Rwy 15-33.

MISSED APPROACH: Climb to 700 then climbing left turn to 2000 on heading 146° and BAL VORTAC R-100 to JUGMO INT/12.3 DME and hold.

ATIS 124.925	POTOMAC APP CON 119.0 282.275	MARTIN TOWER 121.3(CTAF) 0 254.425	GND CON 121.8 253.4	UNICOM 122.95
------------------------	---	--	-------------------------------	-------------------------



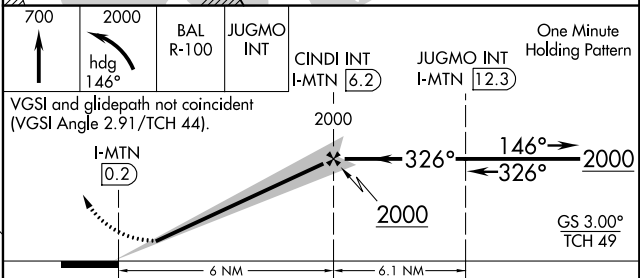
ELEV 22	TDZE 14
----------------	----------------



HIRL Rwy 15-33
 REIL Rwy 15 and 33
 Rwy 33 Idg 8100'
 (Military Operations Only)
 Rwy 15 take-off 8100'
 (Military Operations Only)

FAF to MAP 6 NM

Knots	60	90	120	150	180
Min:Sec	6:00	4:00	3:00	2:24	2:00



CATEGORY	A	B	C	D
S-LDA/GS 33	264-1 250 (300-1)			
S-LDA 33	380-1 366 (400-1)		380-1¼ 366 (400-1¼)	
CIRCLING	540-1 518 (600-1)		680-1¾ 740-2¼ 718 (800-2¼)	

NE-3, 21 APR 2022 to 19 MAY 2022

NE-3, 21 APR 2022 to 19 MAY 2022