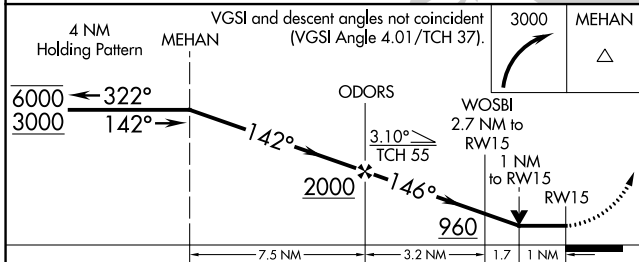
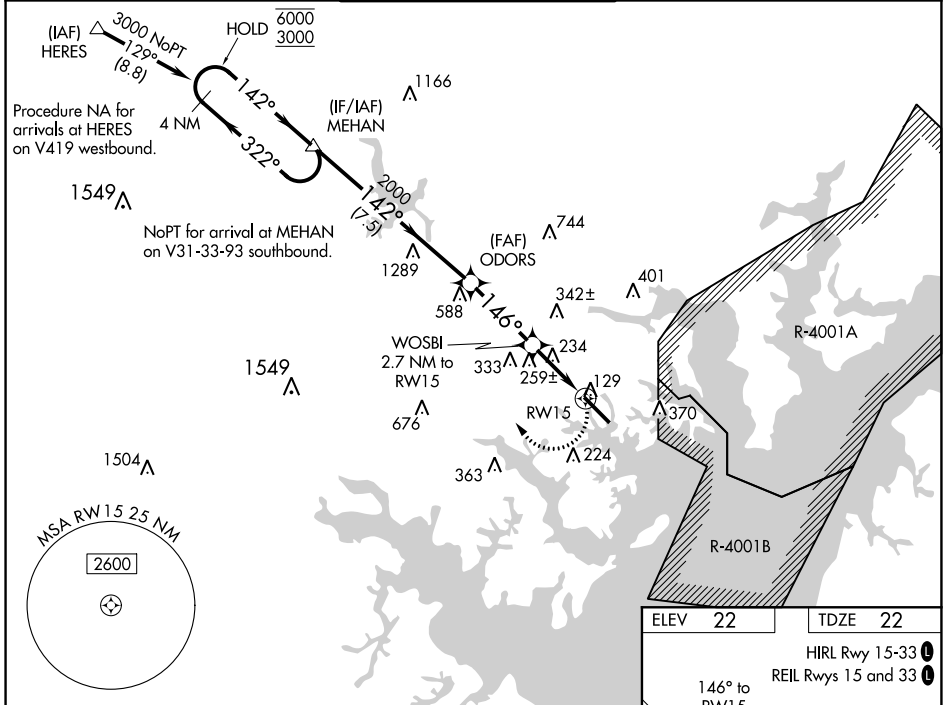


WAAS CH 45622 W15A	APP CRS 146°	Rwy ldg TDZE Apt Elev	6997 22 22
--	------------------------	-----------------------------	---------------------------------------

RNAV (GPS) RWY 15

MARTIN STATE (MTN)

RNP APCH. ▼ Rwy 15 helicopter visibility reduction below $\frac{3}{4}$ SM NA. When local altimeter setting not received, use Baltimore/Washington Intl Thurgood Marshall altimeter setting; increase all MDA 60 feet and increase LP Cats C and D visibility $\frac{1}{8}$ SM, LNAV Cats C and D visibility $\frac{1}{4}$ SM and Circling Cat C and D visibility $\frac{1}{4}$ SM. Circling Cat D NA northeast of Rwy 15-33. ▲ MISSED APPROACH: Climbing right turn to 3000 direct MEHAN and hold.				
ATIS 124.925	POTOMAC APP CON 119.0 282.275	MARTIN TOWER 121.3(CTAF) 0 254.425	GND CON 121.8 253.4	UNICOM 122.95



ELEV 22	TDZE 22
---------	---------

HIRL Rwy 15-33
REIL Rwys 15 and 33

Rwy 33 ldg 8100'
(Military Operations Only)
Rwy 15 take-off 8100'
(Military Operations Only)

NE-3, 21 APR 2022 to 19 MAY 2022

NE-3, 21 APR 2022 to 19 MAY 2022