

|  |                        |                             |                                       |
|--|------------------------|-----------------------------|---------------------------------------|
| WAAS<br>CH <b>40307</b><br><b>W33A</b> | APP CRS<br><b>326°</b> | Rwy ldg<br>TDZE<br>Apt Elev | <b>6997</b><br><b>14</b><br><b>22</b> |
|--|------------------------|-----------------------------|---------------------------------------|

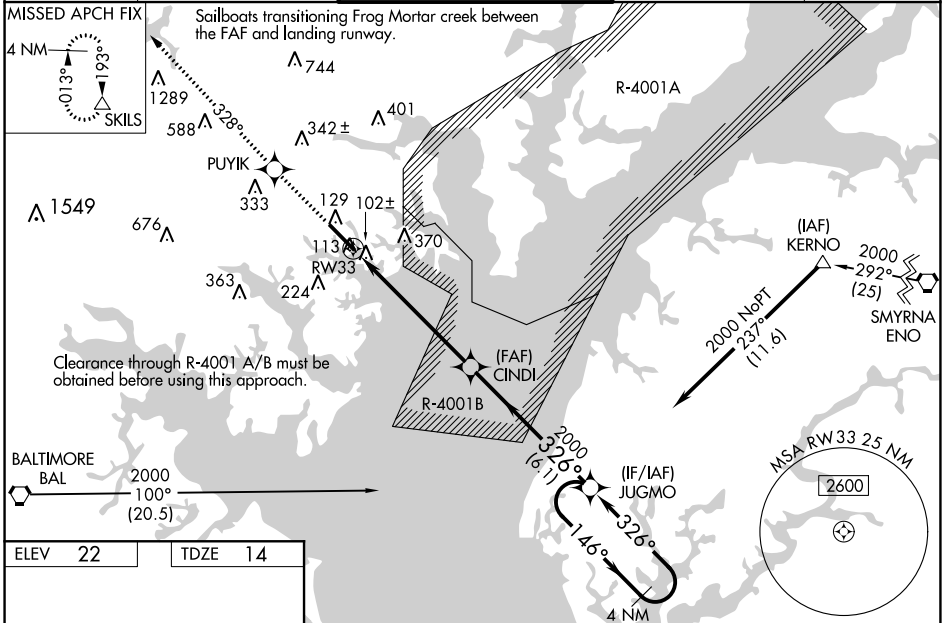
# RNAV (GPS) RWY 33

MARTIN STATE (MTN)

**▼** Baro-VNAV NA when using Baltimore/Washington Intl Thurgood Marshall altimeter setting.  
**▲** For uncompensated Baro-VNAV systems, LNAV/VNAV NA below -15°C (5°F) or above 49°C (120°F). DME/DME RNP-0.3 NA. Helicopter visibility reduction below 1 SM NA. When local altimeter setting not received, use Baltimore/Washington Intl Thurgood Marshall altimeter setting; increase all DA to 454 and all MDA 60 feet, and increase LPV and LNAV/VNAV all Cats visibility ¼ SM, LNAV Cat C Circling Cats C/D visibility ¼ SM. Circling Cat D NA northeast of Rwy 15-33.

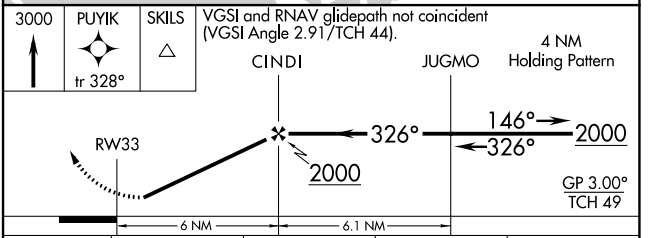
MISSED APPROACH: Climb to 3000 direct PUYIK and on track 328° to SKILS and hold.

|                        |   |  |                               |                         |
|------------------------|---|--|-------------------------------|-------------------------|
| ATIS<br><b>124.925</b> | POTOMAC APP CON<br><b>119.0 282.275</b> | MARTIN TOWER<br><b>121.3(CTAF) 0 254.425</b> | GND CON<br><b>121.8 253.4</b> | UNICOM<br><b>122.95</b> |
|------------------------|---|--|-------------------------------|-------------------------|



|                |                |
|----------------|----------------|
| ELEV <b>22</b> | TDZE <b>14</b> |
|----------------|----------------|

HIRL Rwy 15-33 **①**  
 REIL Rws 15 and 33 **①**  
 Rwy 33 ldg 8100'  
 (Military Operations Only)  
 Rwy 15 take-off 8100'  
 (Military Operations Only)



| CATEGORY     | A     | B           | C                      | D                      |
|--------------|-------|-------------|------------------------|------------------------|
| LPV DA       |       | 402-1¼      | 388 (400-1¼)           |                        |
| LNAV/VNAV DA |       | 402-1¼      | 388 (400-1¼)           |                        |
| LNAV MDA     |       | 380-1       | 366 (400-1)            | 380-1¼<br>366 (400-1¼) |
| CIRCLING     | 540-1 | 518 (600-1) | 680-1¾<br>658 (700-1¾) | 740-2¼<br>718 (800-2¼) |

NE-3, 21 APR 2022 to 19 MAY 2022

NE-3, 21 APR 2022 to 19 MAY 2022