

WAAS CH 63235 W27A	APP CRS 272°	Rwy Idg TDZE Apt Elev	5600 452 452
--	------------------------	-----------------------------	---

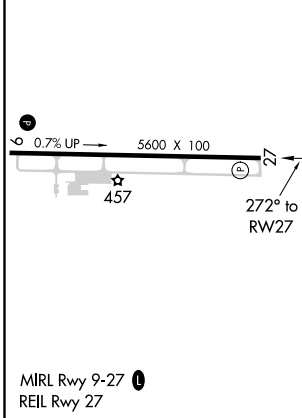
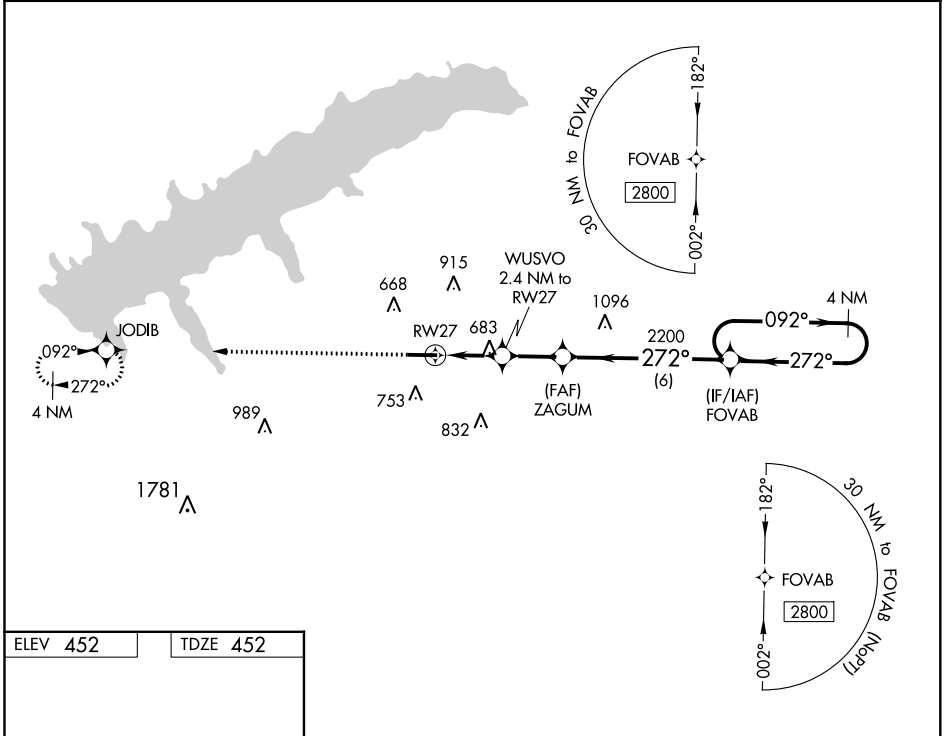
RNAV (GPS) RWY 27

UNIVERSITY-OXFORD (UOX)

▽ DME/DME RNP-0.3 NA. VDP NA with Olive Branch altimeter setting. When local altimeter setting not received, use Olive Branch altimeter setting and increase all MDA 100 feet; increase LNAV and LP Cats C, D visibilities 3/8 mile, and Circling Cat C visibility 1/4 mile. Rwy 27 helicopter visibility reduction below 3/4 SM NA.

▲ MISSED APPROACH: Climb to 2800 direct JODIB and hold.

AWOS-3PT 132.725	MEMPHIS CENTER 128.5 381.4	GCO 135.075	UNICOM 123.0 (CTAF) 0
----------------------------	--------------------------------------	-----------------------	---------------------------------



2800	JODIB	WUSVO 2.4 NM to RW27	ZAGUM	FOVAB	4 NM Holding Pattern
2800		1.1 NM to RW27	3.50° TCH 53	2200	092° → 2800
		1.1	1.3 NM	2.2 NM	6 NM
CATEGORY	A	B	C	D	
LP MDA	940-1	488 (500-1)	940-1 ³ / ₈	488 (500-1 ³ / ₈)	
LNAV MDA	960-1	508 (600-1)	960-1 ³ / ₈	508 (600-1 ³ / ₈)	
C CIRCLING	980-1 528 (600-1)	1060-1 608 (700-1)	1380-2 ³ / ₄ 928 (1000-2 ³ / ₄)	1380-3 928 (1000-3)	