

WAAS CH 77800 W09A	APP CRS 092°	Rwy Idg TDZE Apt Elev	5600 418 452
--	------------------------	-----------------------------	---

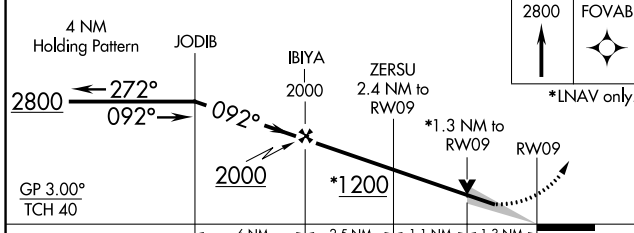
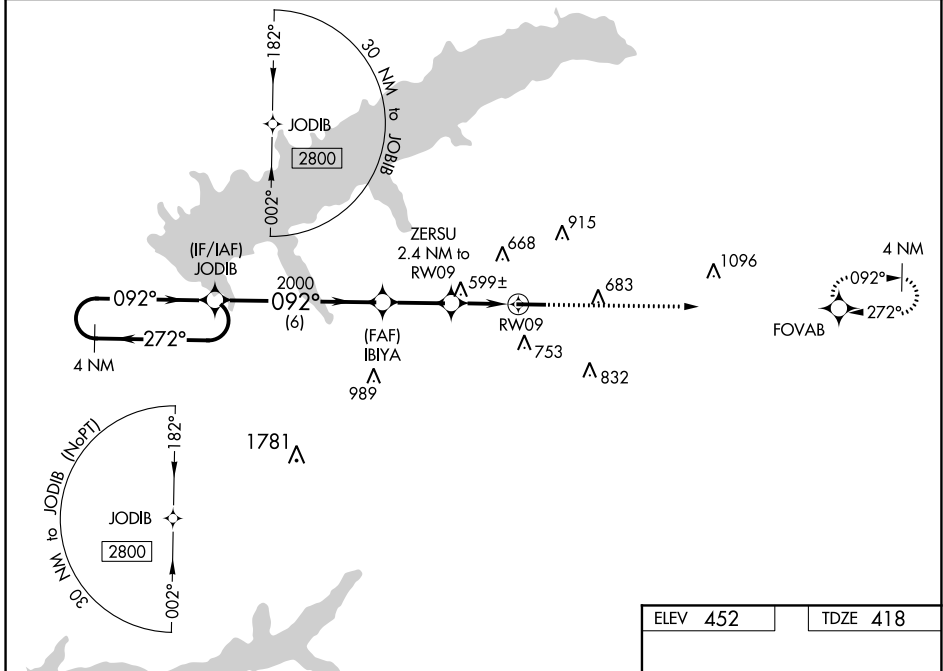
RNAV (GPS) RWY 9

UNIVERSITY-OXFORD (UOX)

For uncompensated Baro-VNAV systems, LNAV/VNAV NA below -15°C (5°F) or above 54°C (130°F). DME/DME RNP-0.3 NA. When local altimeter setting not received, use Olive Branch altimeter setting and increase all DA 94 feet and all MDA 100 feet; increase LPV all Cats visibility ¼ mile, LNAV/VNAV all Cats visibility ⅓ mile, LNAV Cats C, D and Circling Cat C visibilities ¼ mile. Baro-VNAV and VDP NA when using Olive Branch altimeter setting.

MISSED APPROACH:
Climb to 2800 direct FOVAB and hold.

AWOS-3PT 132.725	MEMPHIS CENTER 128.5 381.4	GCO 135.075	UNICOM 123.0 (CTAF) 0
----------------------------	--------------------------------------	-----------------------	---------------------------------



ELEV 452	TDZE 418
----------	----------

Obstacle diagram for RWY 9 showing a 0.7% UP slope and a 5600 X 100 runway length. The diagram includes a 457 ft obstacle and a 27 heading. MIRR Rwy 9-27 and REIL Rwy 27 are also indicated.

CATEGORY	A	B	C	D
LPV DA		668-¾	250 (300-¾)	
LNAV/VNAV DA		872-1½	454 (500-1½)	
LNAV MDA	860-1	442 (500-1)	860-1¾	442 (500-1¾)
C CIRCLING	980-1 528 (600-1)	1060-1 608 (700-1)	1380-2¾ 928 (1000-2¾)	1380-3 928 (1000-3)

SC-4, 21 APR 2022 to 19 MAY 2022

SC-4, 21 APR 2022 to 19 MAY 2022