

LOC I-YYY <b>108.3</b>	APP CRS <b>125°</b>	Rwy Idg <b>4000</b>
		TDZE <b>1121</b>
		Apt Elev <b>1125</b>

# LOC RWY 12

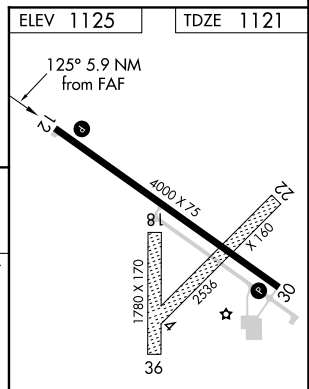
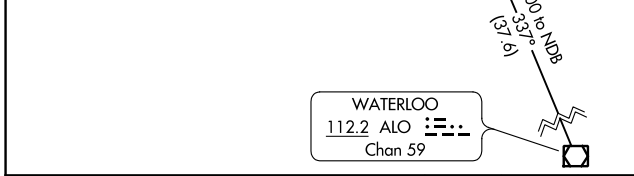
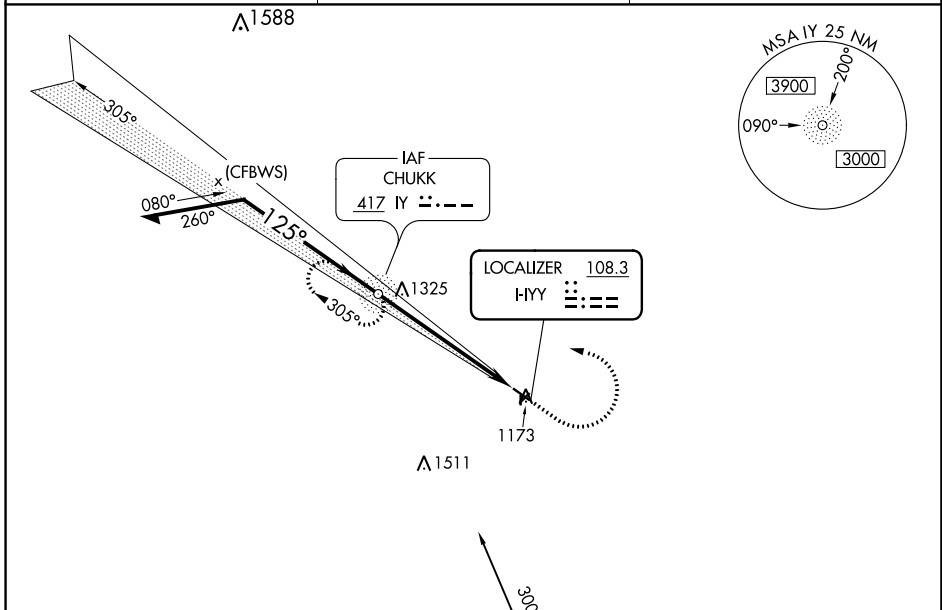
NORTHEAST IOWA RGNL (CCY)

ADF required for procedure entry.

**⚠** Circling NA to Rwys 4-22 and 18-36. When local altimeter setting not received, use Waterloo altimeter setting and increase all MDA 120 feet, increase S-12 visibility Cat C 3/8 SM and Circling Cat C 1/2 SM.

MISSED APPROACH: Climb to 1600 then climbing left turn to 3000 direct IY NDB and hold.

AWOS-3 <b>125.525</b>	WATERLOO APP CON * <b>118.9 251.15</b>	UNICOM <b>122.8 (CTAF) 0</b>
--------------------------	---	---------------------------------



VGSI and descent angles not coincident (VGSI Angle 3.00/TCH 26).

CATEGORY	A	B	C	D
S-12	1560-1	439 (500-1)	1560-1¼ 439 (500-1¼)	NA
<b>C</b> CIRCLING	1560-1 435 (500-1)	1580-1 455 (500-1)	1760-1¾ 635 (700-1¾)	NA

MIRL Rwy 12-30 0				
REIL Rwys 12 and 30 0				
FAF to MAP 5.9 NM				
Knots	60	90	120	150
Min:Sec	5:54	3:56	2:57	2:22
				1:58

NC-3, 21 APR 2022 to 19 MAY 2022

NC-3, 21 APR 2022 to 19 MAY 2022