

|  |                         |                        |
|--|-------------------------|------------------------|
| WAAS<br>CH <b>82438</b><br><b>W30A</b> | APP CRS<br><b>305°</b>  | Rwy Idg<br><b>4000</b> |
|  | TDZE<br><b>1121</b>     |                        |
|  | Apt Elev<br><b>1125</b> |                        |

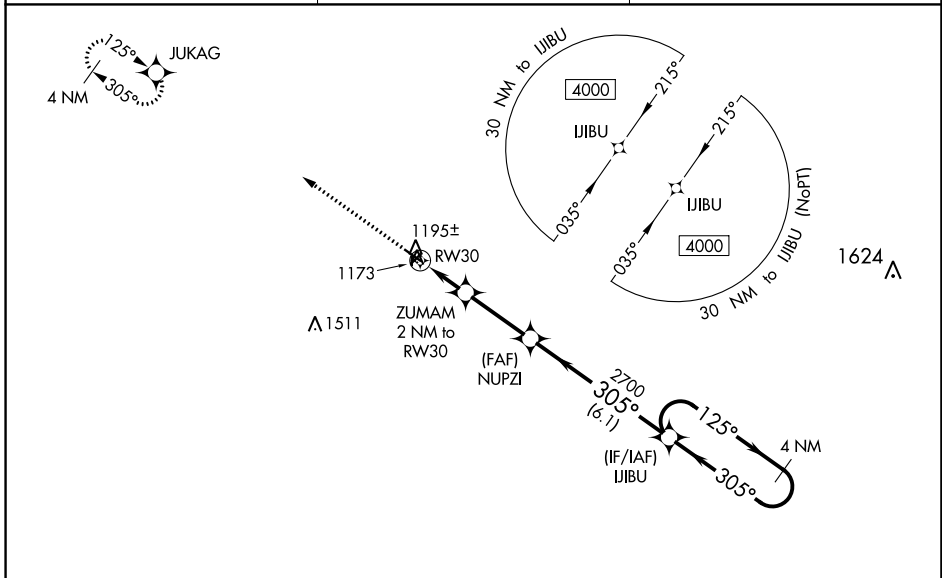
# RNAV (GPS) RWY 30

NORTHEAST IOWA RGNL (CCY)

**⚠** For uncompensated Baro-VNAV systems, LNAV/VNAV NA below -17°C (2°F) or above 54°C (130°F). DME/DME RNP-0.3 NA. Helicopter visibility reduction below ¾ SM NA. When local altimeter setting not received, use Waterloo altimeter setting and increase all DA 110 feet and visibility ¼ mile. Increase all MDA 120 feet, increase LNAV Cat C visibility ¾ mile, and Circling visibility Cat C ½ mile. VDP and Baro-VNAV NA when using Waterloo altimeter setting. Circling Rwy 4-22 and 18-36 NA.

**MISSED APPROACH:** Climb to 4000 direct JUKAG and hold, continue climb-in-hold to 4000.

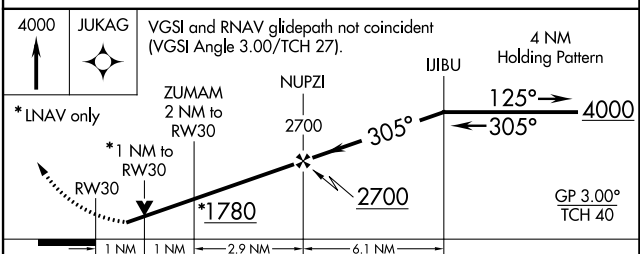
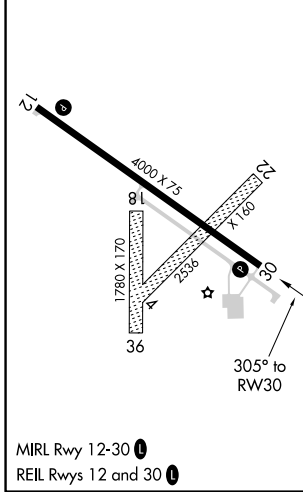
|                          |   |                               |
|--------------------------|---|-------------------------------|
| AWOS-3<br><b>125.525</b> | WATERLOO APP CON ★<br><b>118.9 251.15</b> | UNICOM<br><b>122.8 (CTAF)</b> |
|--------------------------|---|-------------------------------|



NC-3, 21 APR 2022 to 19 MAY 2022

NC-3, 21 APR 2022 to 19 MAY 2022

|                  |                  |
|------------------|------------------|
| ELEV <b>1125</b> | TDZE <b>1121</b> |
|------------------|------------------|



| CATEGORY          | A                     | B                     | C                       | D  |
|-------------------|-----------------------|-----------------------|-------------------------|----|
| LPV DA            | 1371-1                | 250 (300-1)           |                         | NA |
| LNAV/VNAV DA      | 1371-1                | 250 (300-1)           |                         | NA |
| LNAV MDA          | 1460-1                | 339 (400-1)           |                         | NA |
| <b>C</b> CIRCLING | 1520-1<br>395 (400-1) | 1580-1<br>455 (500-1) | 1760-1¾<br>635 (700-1¾) | NA |