

LOM AK	APP CRS	Rwy Idg	3947
362	351°	TDZE	1129
		Apt Elev	1134

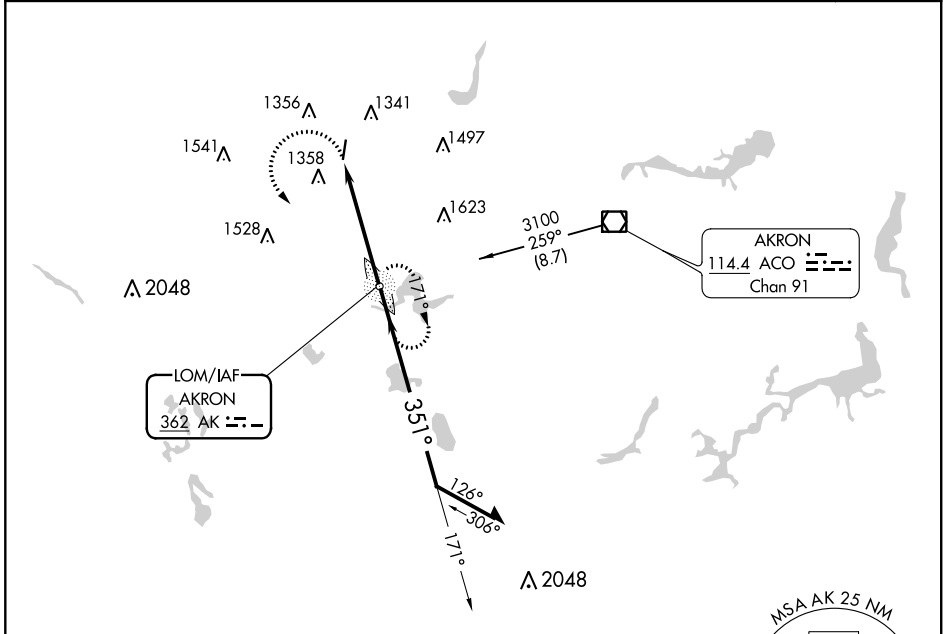
NDB RWY 1

KENT STATE UNIVERSITY (1G3)

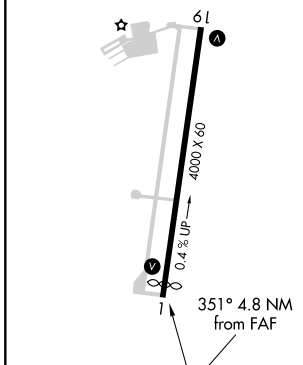
NA Use Akron Fulton altimeter setting; when not received, use Akron-Canton Rgnl altimeter setting and increase all MDA 20 feet. Rwy 1 helicopter visibility reduction below 3/4 SM NA.

MISSED APPROACH: Climbing left turn to 3100 direct AKRON LOM and hold.

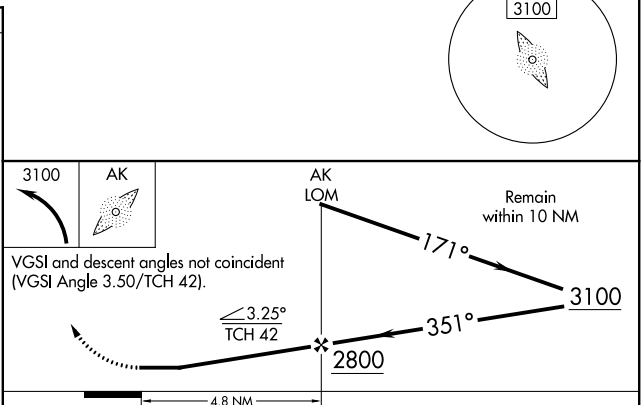
AWOS-2 119.15	AKR ASOS 126.825	CLEVELAND APP CON* 118.6 371.875	CLNC DEL 125.65	UNICOM 122.725 (CTAF)	122.9 0
-------------------------	----------------------------	--	---------------------------	---------------------------------	-----------------------



ELEV 1134	TDZE 1129
-----------	-----------



FAF to MAP 4.8 NM					
Knots	60	90	120	150	180
Min:Sec	4:48	3:12	2:24	1:55	1:36



CATEGORY	A	B	C	D
S-1	1760-1	631 (700-1)	1760-1 7/8 631 (700-1 7/8)	NA
CIRCLING	1760-1	626 (700-1)	1760-1 7/8 626 (700-1 7/8)	NA

NDB RWY 1

EC-2, 21 APR 2022 to 19 MAY 2022

EC-2, 21 APR 2022 to 19 MAY 2022