

WAAS CH <b>61001</b> <b>W01A</b>	APP CRS <b>016°</b>	Rwy Idg <b>3947</b> TDZE <b>1129</b> Apt Elev <b>1134</b>
--	------------------------	---

# RNAV (GPS) RWY 1

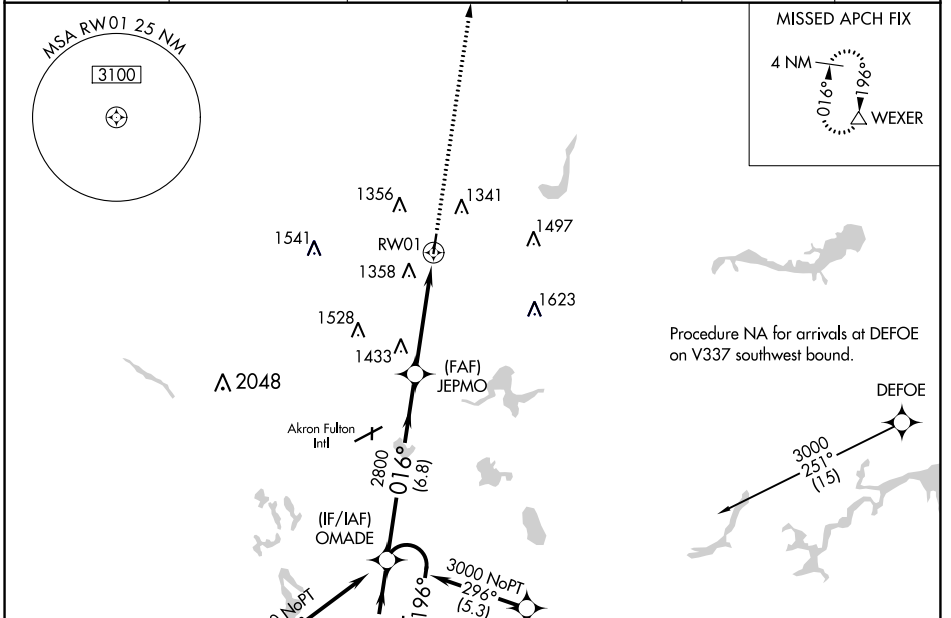
KENT STATE UNIVERSITY (1G3)

RNP APCH.

**⚠** Rwy 1 helicopter visibility reduction below 3/4 SM NA. Use Akron Fulton Intl altimeter setting; when not received use Akron-Canton Rgnl altimeter setting and increase all DA/MDAs 20 feet.

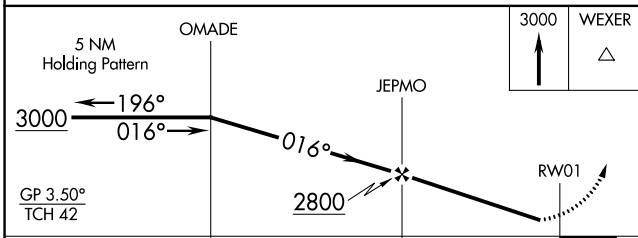
**⚠** MISSED APPROACH: Climb to 3000 direct WEXER and hold.

AWOS-2 <b>119.15</b>	AKR ASOS <b>126.825</b>	CLEVELAND APP CON * <b>118.6 371.875</b>	CLNC DEL <b>125.65</b>	UNICOM <b>122.725</b> (CTAF)	<b>122.9</b> <b>⓪</b>
-------------------------	----------------------------	---	---------------------------	---------------------------------	-----------------------

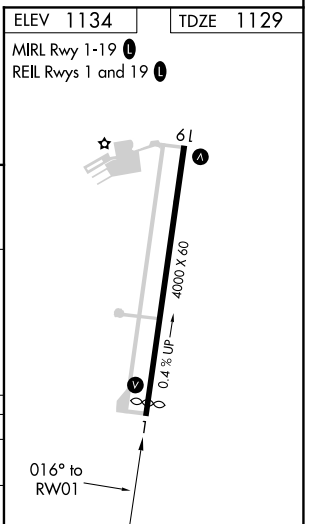


Procedure NA for arrivals at DEFOE on V337 southwest bound.

Procedure NA for arrivals at JOSEF on V72 southwest bound.



CATEGORY	A	B	C	D
LPV DA	1499-1 370 (400-1)			NA
LNAV MDA	1760-1	631 (700-1)	1760-1 3/4 631 (700-1 3/4)	NA



EC-2, 21 APR 2022 to 19 MAY 2022

EC-2, 21 APR 2022 to 19 MAY 2022