

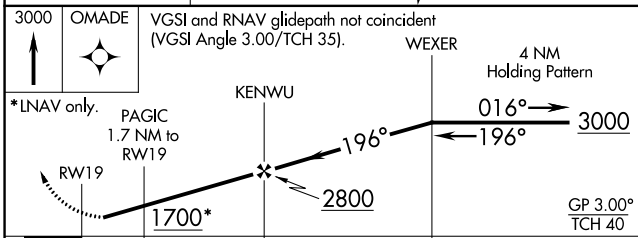
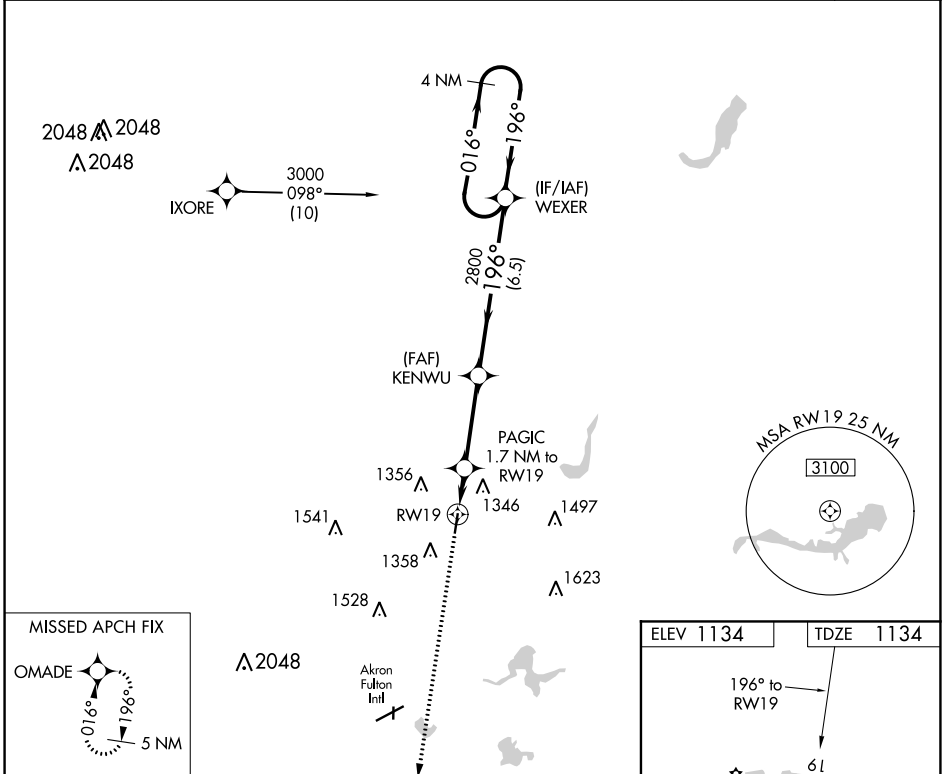
WAAS CH <b>65701</b> <b>W19A</b>	APP CRS <b>196°</b>	Rwy Idg <b>4000</b> TDZE <b>1134</b> Apt Elev <b>1134</b>
--	------------------------	---

# RNAV (GPS) RWY 19

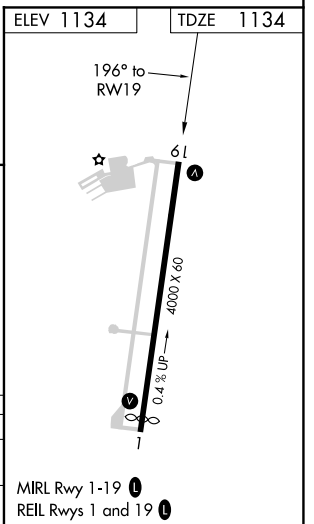
KENT STATE UNIVERSITY (1G3)

RNP APCH.		<p><b>⚠</b> Rwy 19 helicopter visibility reduction below 3/4 SM NA. Use Akron Fulton Intl altimeter setting; if not received use Akron-Canton Rgnl altimeter setting, and increase all DAs/MDAs 20 feet. Baro-VNAV NA.</p>		<p>MISSED APPROACH: Climb to 3000 direct OMADE and hold.</p>	
-----------	--	--	--	--	--

AWOS-2 <b>119.15</b>	AKR ASOS <b>126.825</b>	CLEVELAND APP CON * <b>118.6 371.875</b>	CLNC DEL <b>125.65</b>	UNICOM <b>122.725</b> (CTAF)	<b>122.9</b> <b>0</b>
-------------------------	----------------------------	---	---------------------------	---------------------------------	-----------------------



CATEGORY	A	B	C	D
LPV DA	1443-1 309 (400-1)			NA
LNAV MDA	1580-1 446 (500-1)		1580-1 1/4 446 (500-1 1/4)	NA



EC-2, 21 APR 2022 to 19 MAY 2022

EC-2, 21 APR 2022 to 19 MAY 2022